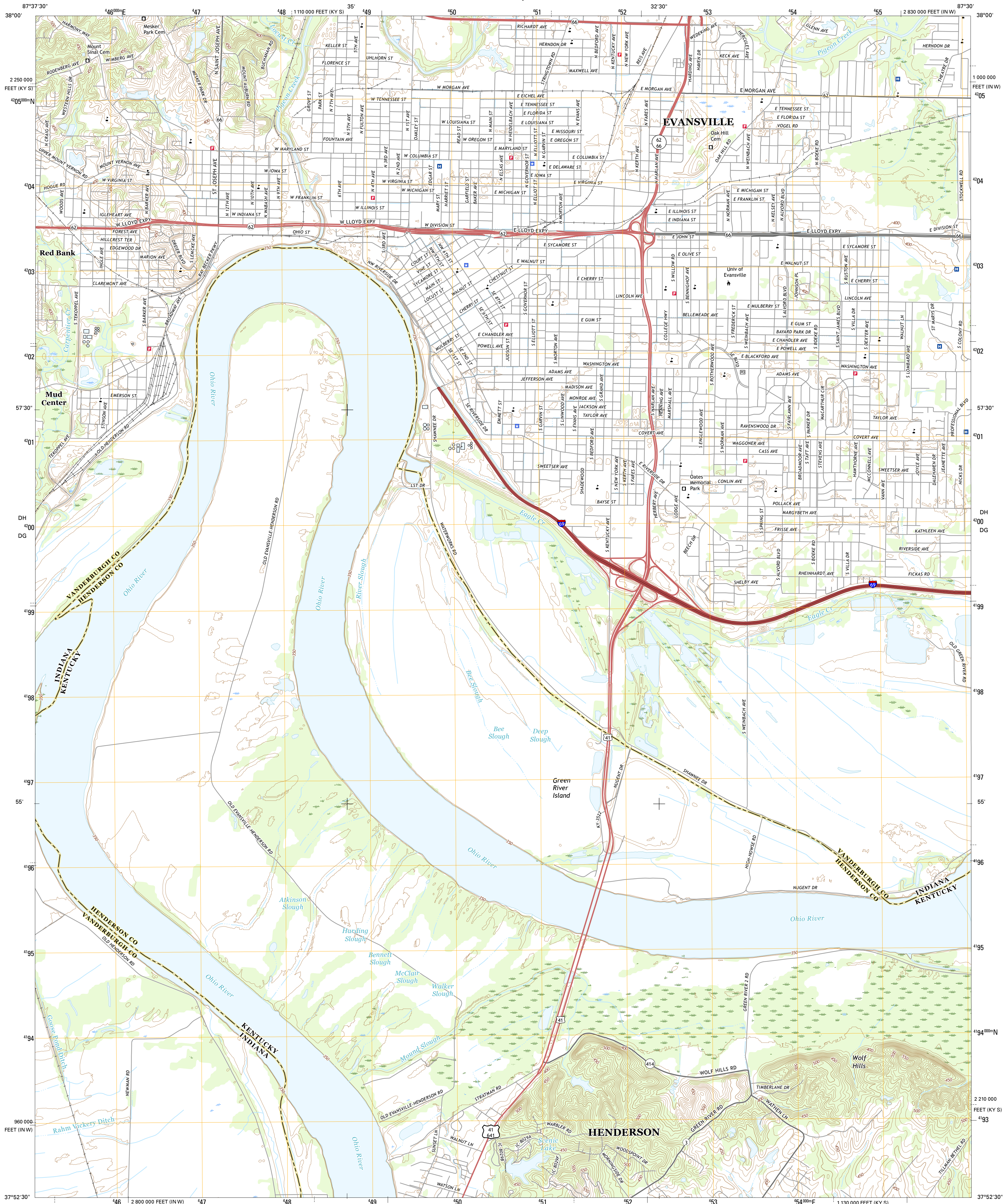




U.S. DEPARTMENT OF THE INTERIOR
U.S. GEOLOGICAL SURVEY



EVANSVILLE SOUTH QUADRANGLE
INDIANA-KENTUCKY
7.5-MINUTE SERIES



Produced by the United States Geological Survey
North American Datum of 1983 (NAD83)
World Geodetic System of 1984 (WGS84), Projection and
1 000-meter grid: Indiana Transverse Mercator, Zone 165
10 000-foot ticks: Indiana Coordinate System of 1983 (west
zone), Kentucky Coordinate System of 1983 (south zone)

This map is not a legal document. Boundaries may be
generalized for this map scale. Private lands within government
reservations may not be shown. Obtain permission before
entering private lands.

Imagery.....NAP, December 2014
Roads.....U.S. Census Bureau, 2015 - 2016
Names.....GNIS, 2016
Hydrography.....National Hydrography Dataset, 2014
Contours.....National Elevation Dataset, 2016
Boundaries.....Multiple sources; see metadata file 1972 - 2016
Public Land Survey System.....BLM, 2015
Wetlands.....FWS National Wetlands Inventory 1977 - 2014

UTM GRID AND 2016 MAGNETIC NORTH
DECLINATION AT CENTER OF SHEET

U.S. National Grid	100,000-m Square ID
DH	4000
DG	0000
Grid Zone Designation	165

SCALE 1:24 000

1 0.5 0 0.5 1 2
1000 500 0 500 1000 2000
KILOMETERS

1 0.5 0 0.5 1 2
1000 500 0 500 1000 2000
METERS

1 0 1000 2000 3000 4000 5000 6000 7000 8000 9000 10000
MILES

FEET

CONTOUR INTERVAL 10 FEET
NORTH AMERICAN VERTICAL DATUM OF 1988

This map was produced to conform with the
National Geospatial Program US Topo Product Standard, 2011.
A metadata file associated with this product is draft version 0.6.19



1	2	3
4	5	6
7	8	9

1 Kasson
2 Evansville North
3 Daylight
4 West Franklin
5 Newburgh
6 Wilson
7 Henderson
8 Spottsville

ROAD CLASSIFICATION

Expressway
Secondary Hwy
Ramp
Interstate Route
Local Connector
Local Road
4WD
US Route
State Route

EVANSVILLE SOUTH, IN-KY
2016

