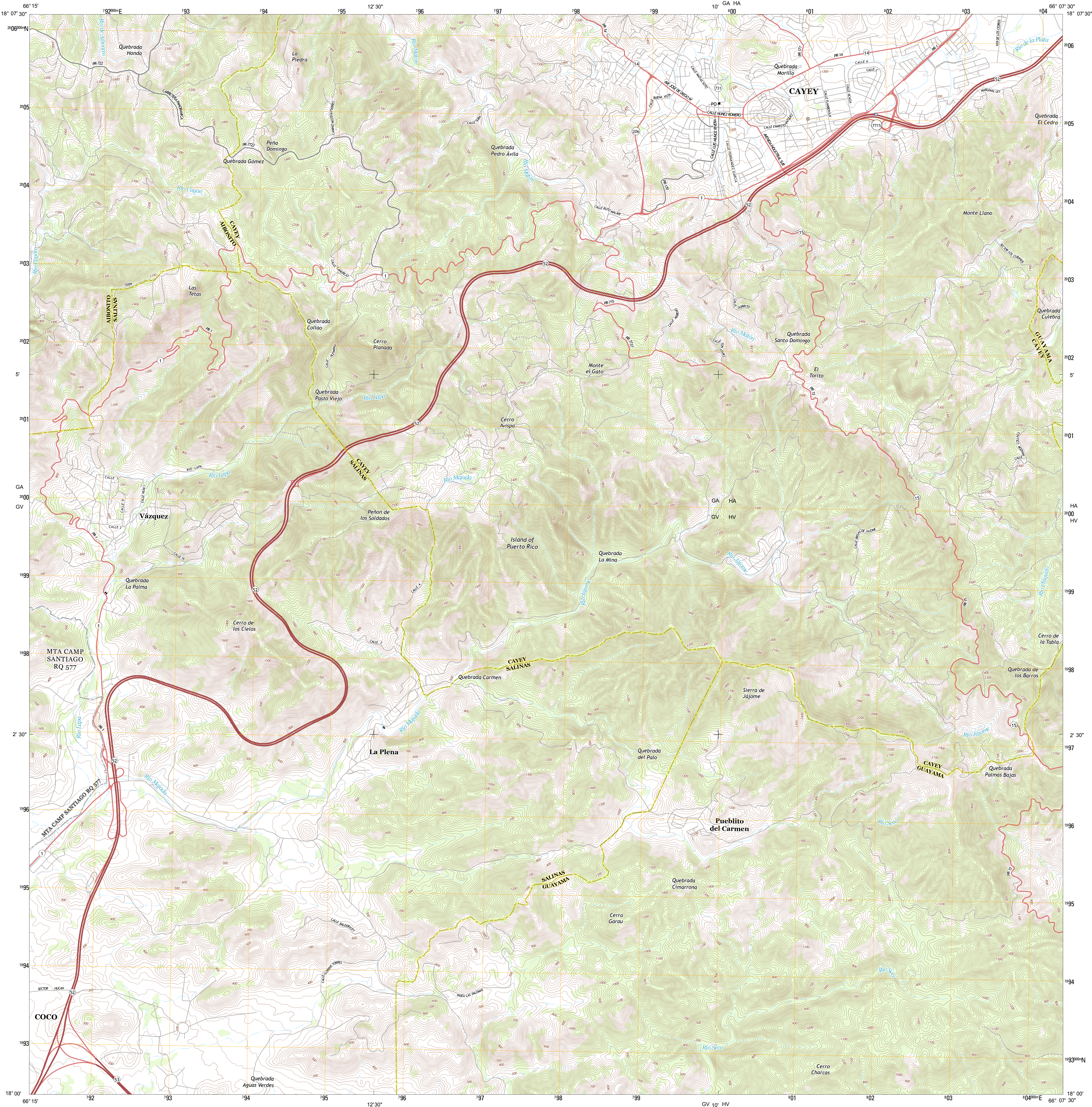




U.S. DEPARTMENT OF THE INTERIOR
U. S. GEOLOGICAL SURVEY

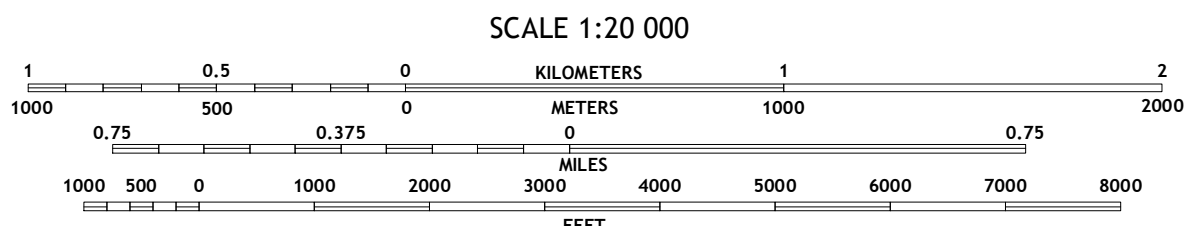
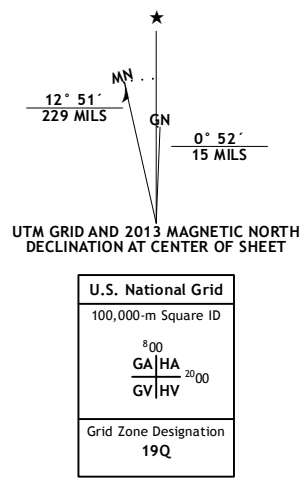


CAYEY QUADRANGLE
PUERTO RICO
7.5-MINUTE SERIES



Produced by the United States Geological Survey
North American Datum of 1983 (NAD83)
World Geodetic System of 1984 (WGS84) Projection and
1 000-meter grid: Universal Transverse Mercator, Zone 19Q

Imagery.....U.S. Army Corps of Engineers, 2011
Roads.....2006-2012 TomTom
Names.....GNSS, 2013
Hydrography.....National Hydrography Dataset, 2011
Contours.....National Elevation Dataset, 2010
Boundaries.....Census, BGC, USGS, 1972 - 2012
Public Land Survey System.....BLM, 2006 - 2008



SCALE 1:20 000

CONTOUR INTERVAL 20 FEET
DATUM 6 LOCAL MEAN SEA LEVEL

This map was produced to conform with the
National Geospatial Program US Topo Product Standard, 2011.
A metadata file associated with this product is draft version 0.6.13



PUERTO RICO and the U.S. VIRGIN ISLANDS
QUADRANGLE LOCATION

1	2	3
4	5	6
7	8	9

ADJOINING QUADRANGLES

- 1 Barranquitas
- 2 Comerio
- 3 Casapueblo
- 4 Coamo
- 5 Patillas
- 6 Salinas
- 7 Central Aguirre
- 8 Guayama

ROAD CLASSIFICATION

Expressway	Local Connector
Secondary Hwy	Local Road
Ramp	4WD
Interstate Route	US Route
	State Route

CAYEY, PR
2013

