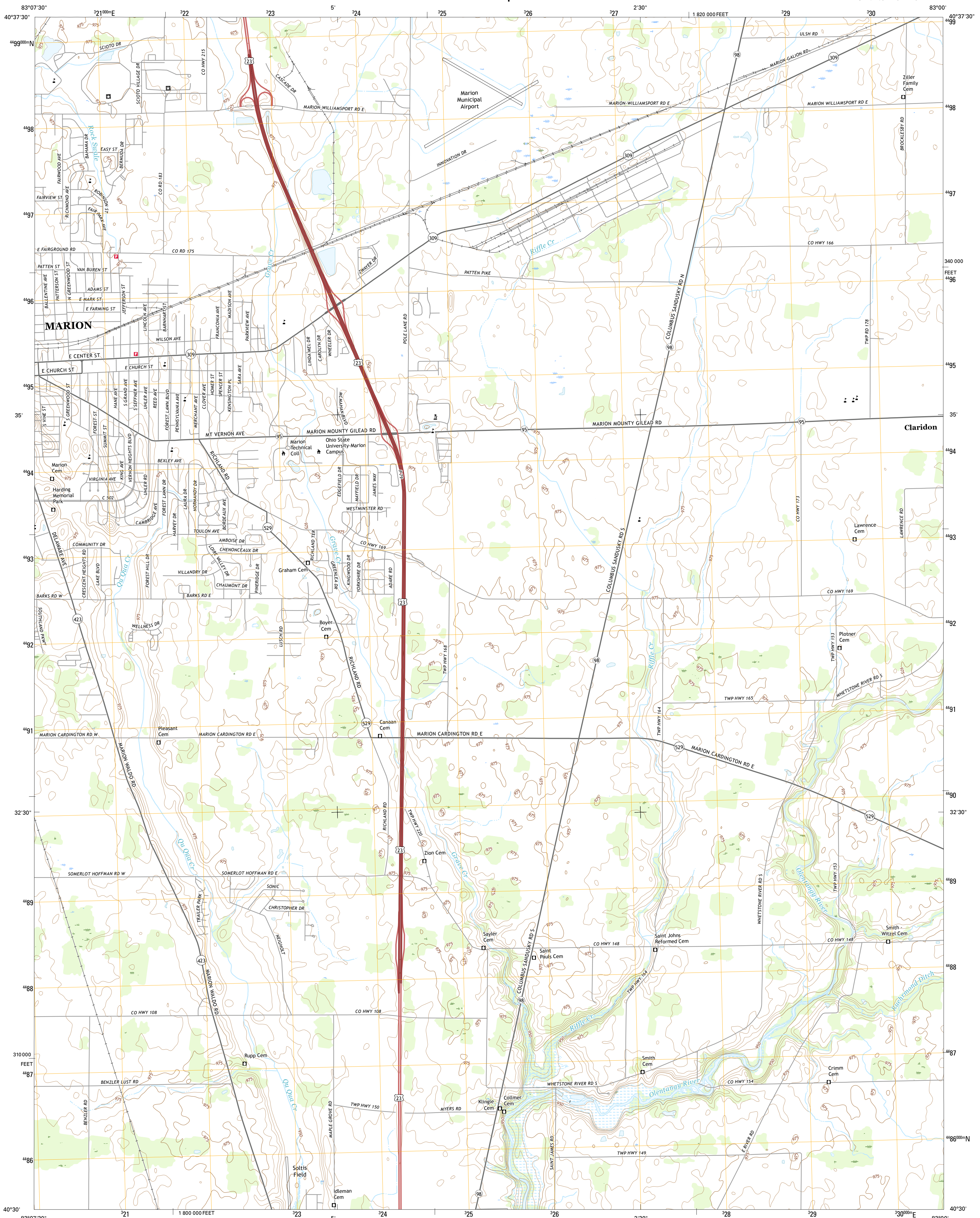




U.S. DEPARTMENT OF THE INTERIOR
U.S. GEOLOGICAL SURVEY



MARION EAST QUADRANGLE
OHIO-MARION CO.
7.5-MINUTE SERIES



Produced by the United States Geological Survey
North American Datum of 1983 (NAD83)
World Geodetic System 1984 (WGS84). Projection and
meter grid: Universal Transverse Mercator, Zone 17T
10 000-foot ticks: Ohio Coordinate System of 1983 (north zone)
This map is not a legal document. Boundaries may be
generated for this map class. Private lands within government
reservations may not be shown. Obtain permission before
reproducing private lands.

Imagery.....NAIP, October 20
.....USGS Census Bureau, 2015
Names.....GNIS,
Hydrography.....National Hydrography Dataset,
Contours.....National Elevation Dataset,
.....Multiple scales; see metadata file 1972
Public Land Survey System.....BLM,
Wetlands.....FWS National Wetlands Inventory 1977

UTM GRID and 2016 MAGNETIC NORTH DECLINATION at CENTER OF SHEET

U.S. National Grid
100,000-m Square ID
LE
Grid Zone Designation
17T

SCALE 1:24 000

CONTOUR INTERVAL 5 FEET
NORTH AMERICAN VERTICAL DATUM OF 1988

This map was produced to conform with the
National Geospatial Program US Topo Product Standard, 2011.
Data file associated with this product is draft version 0.6.19

1	2	3
4		5
6	7	8

ADJOINING QUADRANGLES

- 1 Morral
- 2 Monnett
- 3 Caledonia
- 4 Marion West
- 5 Denmark
- 6 Prospect
- 7 Waldo
- 8 Ashley

MARION EAST, OH
2016