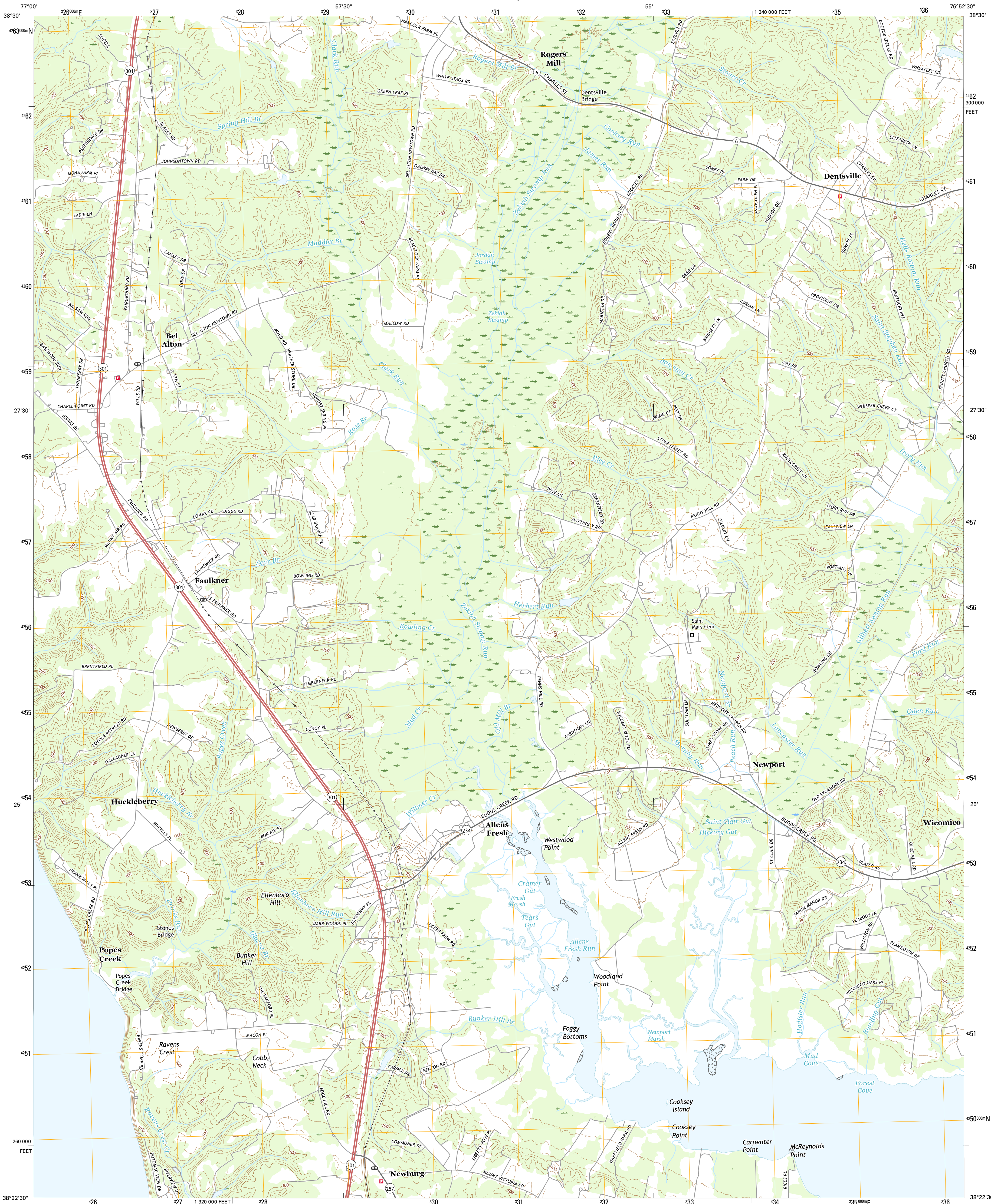




U.S. DEPARTMENT OF THE INTERIOR  
U.S. GEOLOGICAL SURVEY



POPES CREEK QUADRANGLE  
MARYLAND-CHARLES CO.  
7.5-MINUTE SERIES

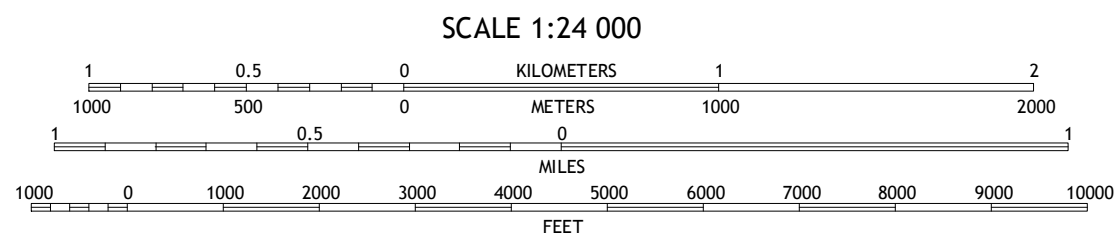
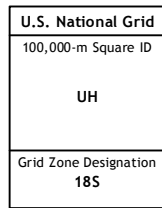
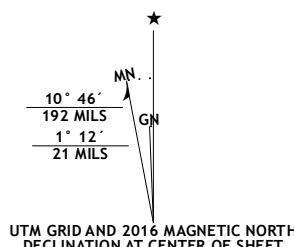


Produced by the United States Geological Survey

North American Datum of 1983 (NAD83)  
Roads..... U.S. Census Bureau, 2015  
Names..... U.S. Census Bureau, 2015  
Hydrography..... National Hydrography Dataset, 2015  
Contours..... National Elevation Dataset, 2015  
Boundaries..... Multiple sources; see metadata file 1972 - 2016

This map is not a legal document. Boundaries may be generalized for this map scale. Private lands within government reservations may not be shown. Obtain permission before entering private lands.

Imagery.....NAIP, September 2015  
Roads..... U.S. Census Bureau, 2015  
Names..... U.S. Census Bureau, 2015  
Hydrography..... National Hydrography Dataset, 2015  
Contours..... National Elevation Dataset, 2015  
Boundaries..... Multiple sources; see metadata file 1972 - 2016  
Wetlands.....FWS National Wetlands Inventory 1977 - 2014



CONTOUR INTERVAL 20 FEET  
NORTH AMERICAN VERTICAL DATUM OF 1988  
This map was produced to conform with the National Geospatial Program US Topo Product Standard, 2011. A metadata file associated with this product is draft version 0.6.19



1	2	3
4	5	6
7	8	9

ADJOINING QUADRANGLES

ROAD CLASSIFICATION	
Expressway	Local Connector
Secondary Hwy	Local Road
Ramp	4WD
Interstate Route	US Route
	State Route

POPES CREEK, MD  
2016

