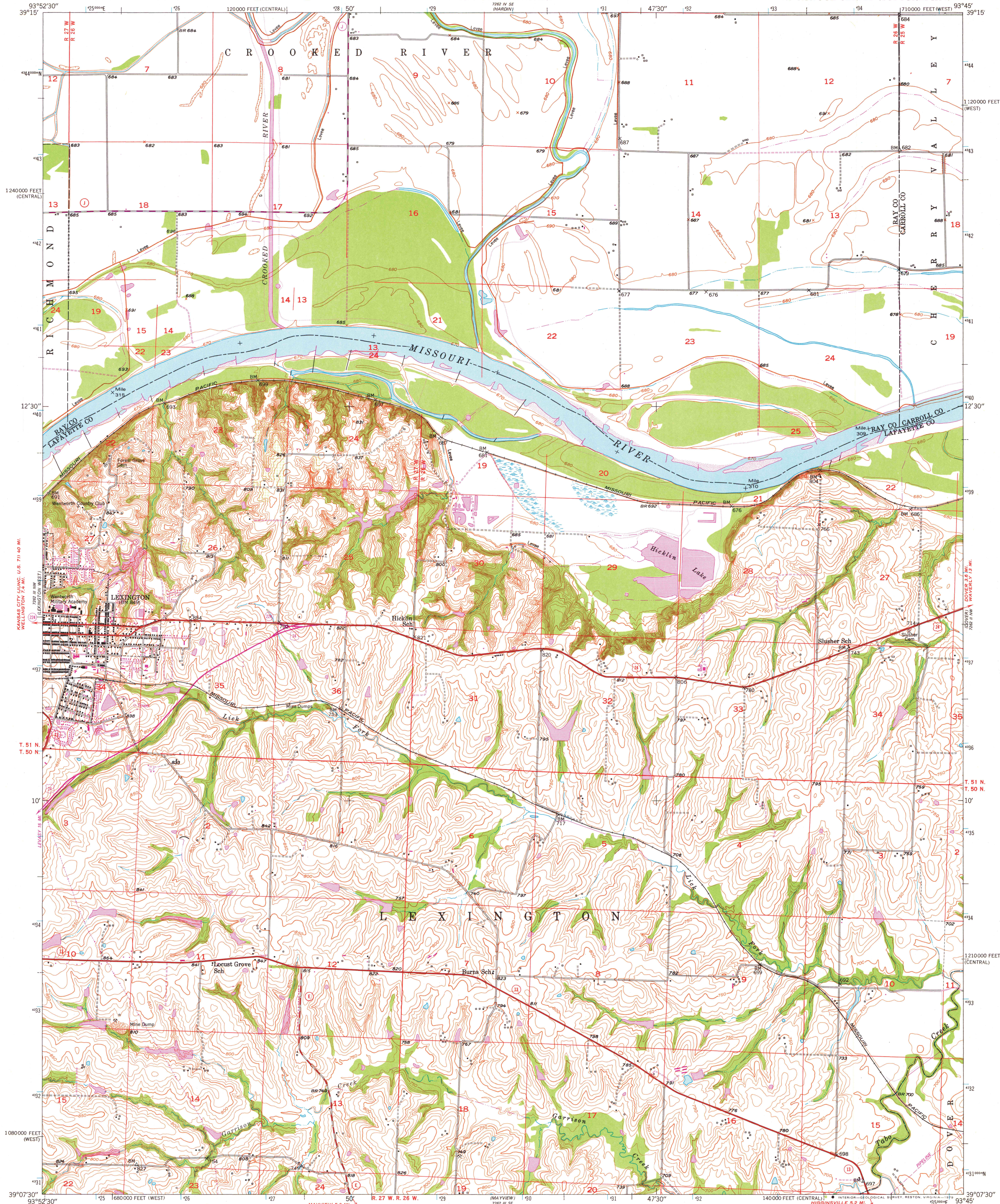


UNITED STATES
DEPARTMENT OF THE INTERIOR
GEOLOGICAL SURVEY

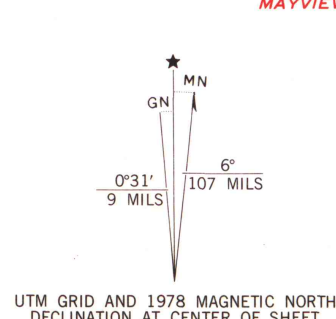


UNITED STATES
DEPARTMENT OF THE ARMY
CORPS OF ENGINEERS

LEXINGTON EAST QUADRANGLE
MISSOURI
7.5 MINUTE SERIES (TOPOGRAPHIC)



Maped, edited, and published by the Geological Survey
Control by Missouri River Commission,
USGS and USC&GS
Topography by multiplex methods from aerial photographs
taken 1947, and by plane-table surveys 1948-1949
Field check 1949
Polyconic projection. 1927 North American datum
10,000-foot grids based on Missouri coordinate system,
central and west zones
1000-meter Universal Transverse Mercator grid ticks,
zone 15, shown in blue
Revisions shown in purple compiled from aerial photographs taken
1977. Map edited 1978. This information not field checked



SCALE 1:24 000
1 000 2000 3000 4000 5000 6000 7000 FEET
1 KILOMETER
CONTOUR INTERVAL 10 FEET
NATIONAL GEODETIC VERTICAL DATUM OF 1929

THIS MAP COMPLIES WITH NATIONAL MAP ACCURACY STANDARDS
FOR SALE BY U. S. GEOLOGICAL SURVEY, DENVER, COLORADO 80226, OR RESTON, VIRGINIA 22092
AND THE DIVISION OF RESEARCH AND TECHNICAL INFORMATION
MISSOURI DEPARTMENT OF NATURAL RESOURCES, ROLLA, MISSOURI 65401
A FOLDER DESCRIBING TOPOGRAPHIC MAPS AND SYMBOLS IS AVAILABLE ON REQUEST



ROAD CLASSIFICATION
Heavy-duty ——— Light-duty ———
Medium-duty ——— Unimproved dirt ———
U. S. Route ——— State Route ———

LEXINGTON EAST, MO.
N3907.5-W9345/7.5

1949
PHOTOREVISED 1978
AMS 7262 III NE-SERIES V879

IAAP AND AIR PHOTO
LIBRARY

JUN 13 1979

University of Wisconsin
Madison