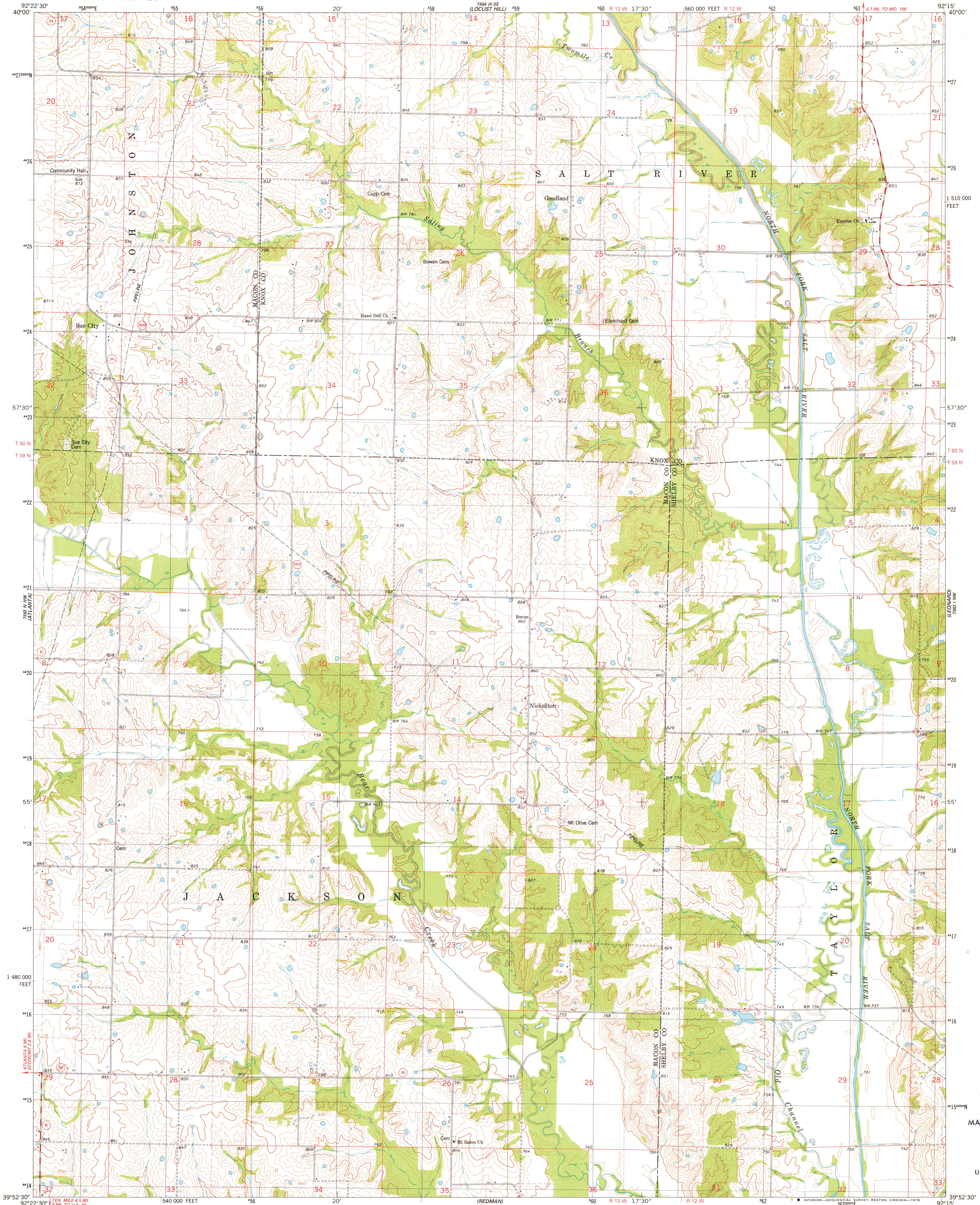




7661 NW  
(NOVELTY)



Maped, edited, and published by the Geological Survey

Control by USGS and NOS/NOAA

Topography by photogrammetric methods from aerial photographs

taken 1974. Field checked 1975. Map edited 1979

Projection and 10,000-foot grid ticks: Missouri coordinate

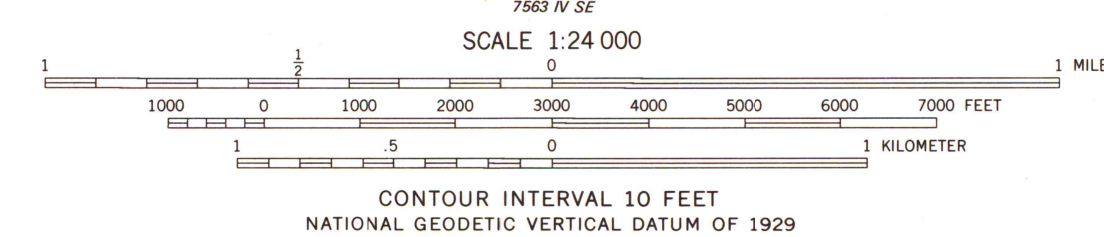
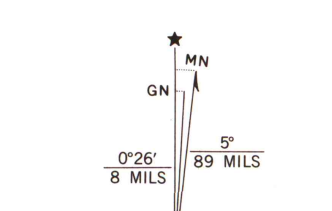
system, central zone (transverse Mercator)

1000-meter Universal Transverse Mercator grid, zone 15

1927 North American datum

Fine red dashed lines indicate selected fence and field lines where

generally visible on aerial photographs. This information is unchecked



ROAD CLASSIFICATION  
Primary highway, hard surface  
Secondary highway, hard surface  
Light-duty road, hard or improved surface  
Unimproved road  
Interstate Route  
U. S. Route  
State Route



SUE CITY, MO.  
NE 4 ATLANTA 15' QUADRANGLE  
N3952.5 — W9215/7.5

1979

AMS 7563 IV NE—SERIES W879

MAP AND AIR PHOTO  
LIBRARY

DEC 10 1979

University of Wisconsin  
Madison