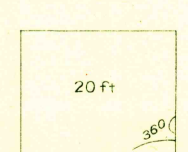
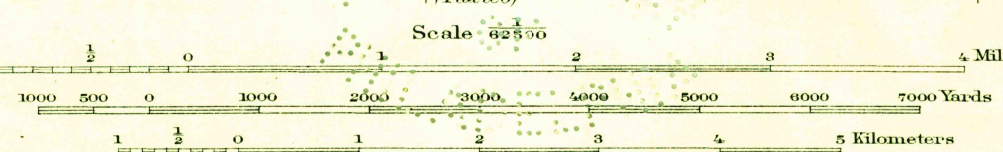




Topography by J.C. Hilliard, S.B. O'Hara, J.A. Shumate, C.D. Mitchell, J.M. Holmes, J.H. Taub, T.W. Ranta, T.V. Cummins, and E.J. Fennell. Culture and drainage in part compiled from aerial photographs taken by Air Corps, U.S. Army. Control by U.S. Geological Survey. Surveyed in 1931.

APPROXIMATE MEAN
MAGNETIC NORTH
DECLINATION, 1931



Polyconic projection. North American datum 5000 yard grid based upon U.S. zone system. C. HARD IMPROVED SURFACED ROADS. OTHER MAIN TRAVELED ROADS. 1934.

ZALMA, MO.
Edition of 1935.