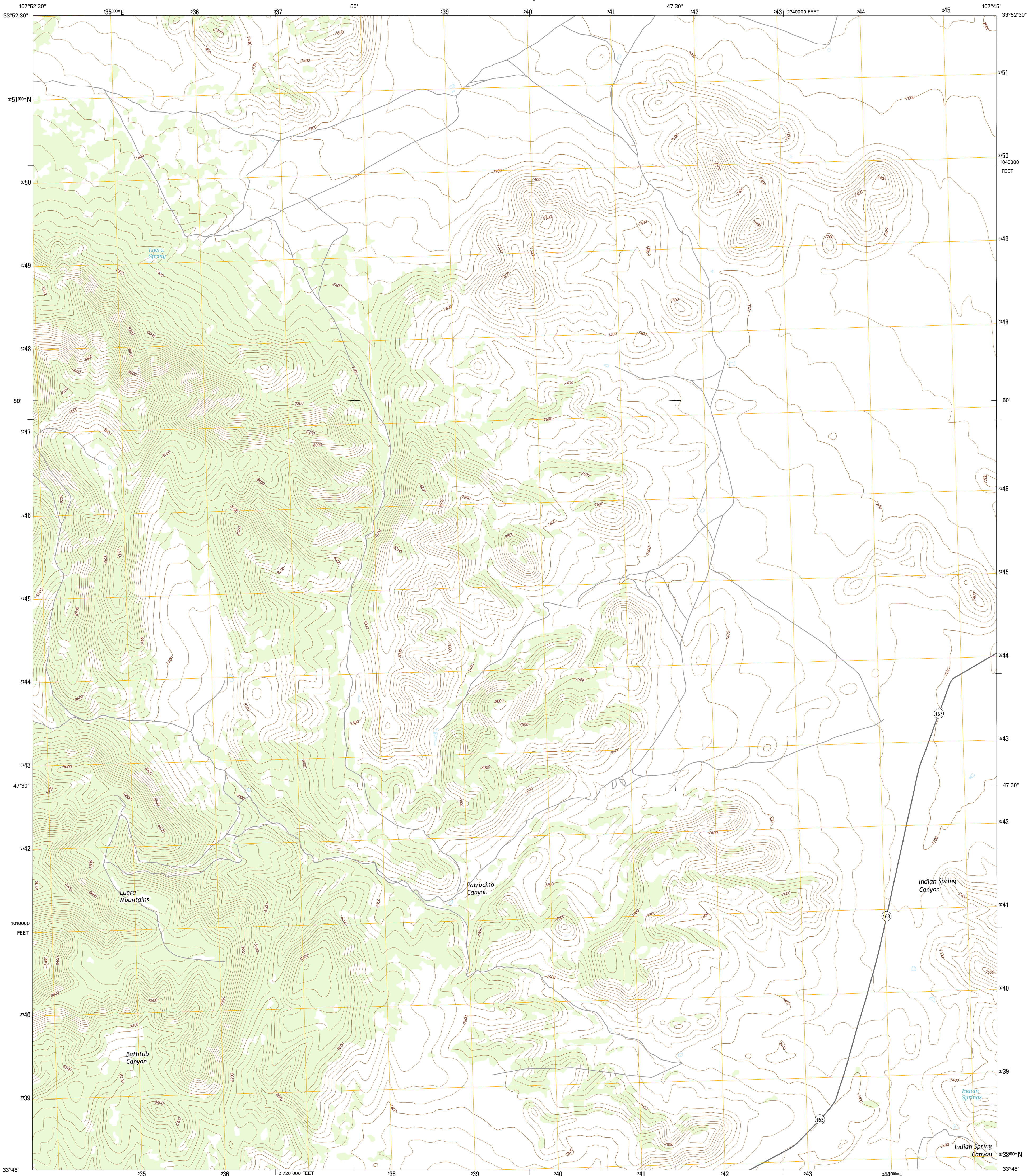




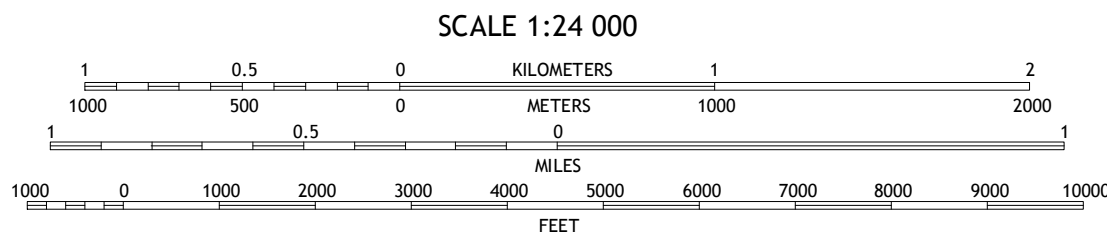
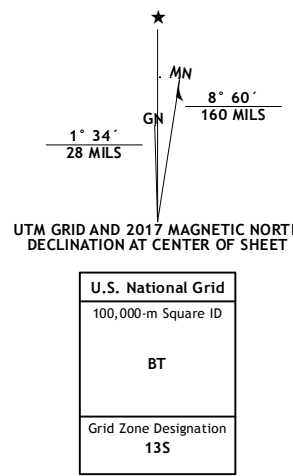
U.S. DEPARTMENT OF THE INTERIOR  
U.S. GEOLOGICAL SURVEY



LUERA MOUNTAINS EAST QUADRANGLE  
NEW MEXICO-CATRON CO.  
7.5-MINUTE SERIES



**Produced by the United States Geological Survey**  
North American Datum of 1983 (NAD83)  
World Geodetic System of 1984 (WGS84) - Projection and  
1 000-meter grid: Universal Transverse Mercator, Zone 13S  
10 000-foot ticks: New Mexico Coordinate System of 1983 (west zone)  
  
This map is not a legal document. Boundaries may be generalized for this map scale. Private lands within government reservations may not be shown. Obtain permission before entering private lands.  
  
Imagery.....NAIP, October 2014  
Roads.....U.S. Census Bureau, 2015 - 2016  
Names.....GNIS, 2016  
Hydrography.....National Hydrography Dataset, 2014  
Contours.....National Elevation Dataset, 2000  
Boundaries.....Multiple sources; see metadata file 1972 - 2016  
Public Land Survey System.....BLM, 2016  
Wetlands.....FWS National Wetlands Inventory 1977 - 2014



CONTOUR INTERVAL 40 FEET  
NORTH AMERICAN VERTICAL DATUM OF 1988  
  
This map was produced to conform with the  
National Geospatial Program US Topo Product Standard, 2011.  
A metadata file associated with this product is draft version 0.6.19



**ROAD CLASSIFICATION**  
Expressway  
Secondary Hwy  
Ramp  
Local Connector  
Local Road  
4WD  
Interstate Route  
US Route  
State Route

1	2	3
4	5	6
7	8	9

ADJOINING QUADRANGLES

LUERA MOUNTAINS EAST, NM  
2017

