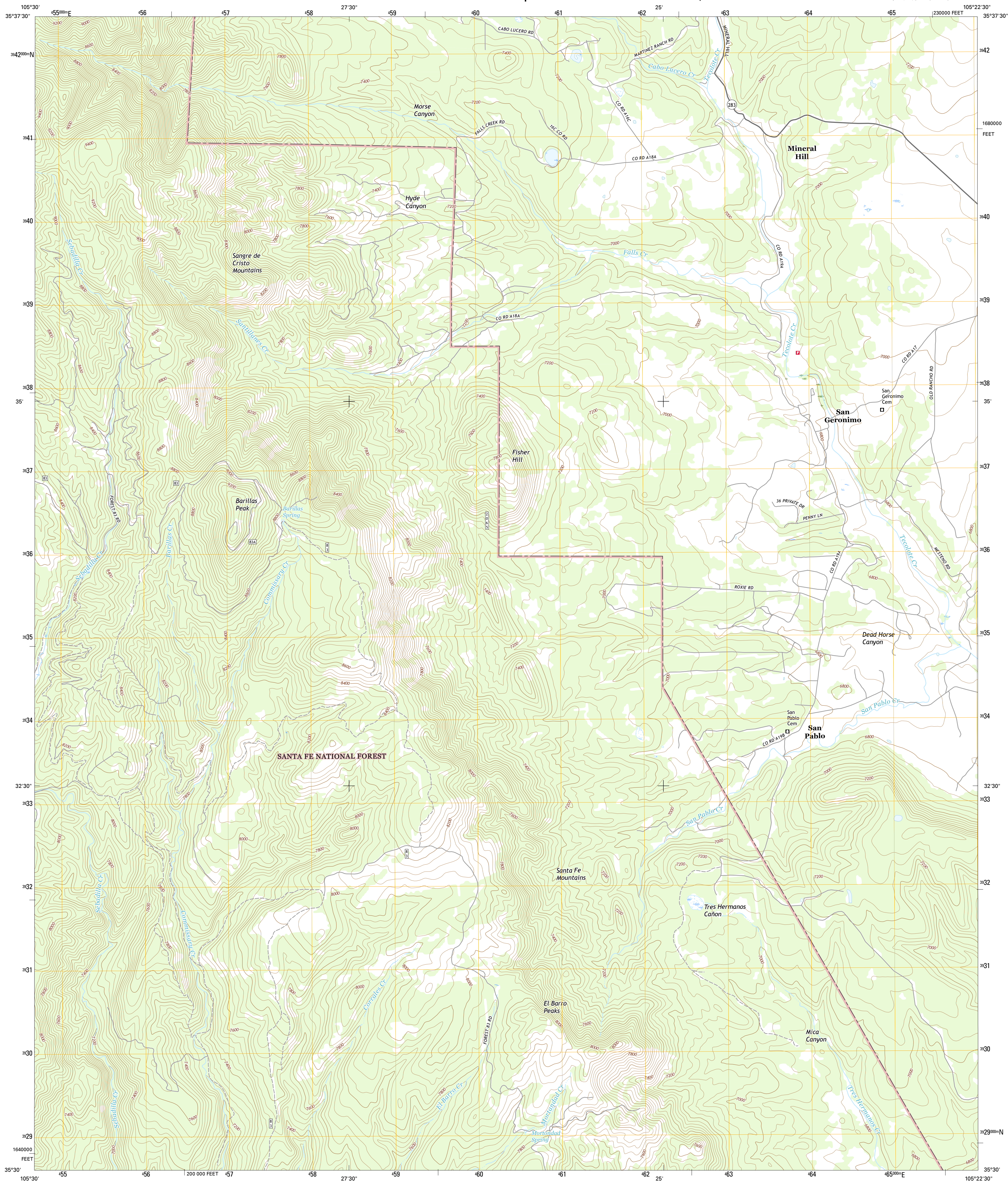




**SAN GERONIMO QUADRANGLE**  
NEW MEXICO-SAN MIGUEL CO.  
7.5-MINUTE SERIES

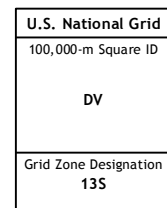
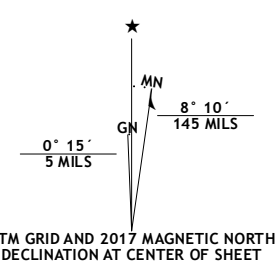


Produced by the United States Geological Survey

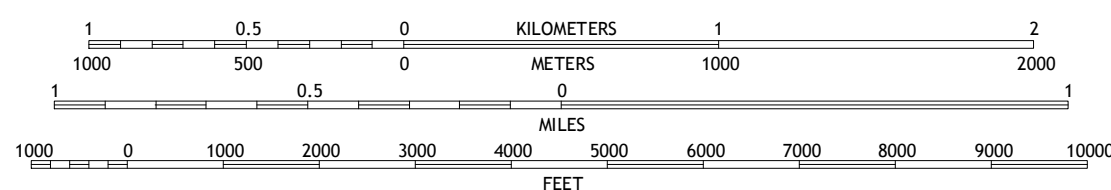
North American Datum of 1983 (NAD83).  
World Geodetic System of 1984 (WGS84). Projection and  
1 000-meter grid: Universal Transverse Mercator, Zone 13S  
10 000-foot ticks: New Mexico Coordinate System of 1983 (east  
zone)

This map is not a legal document. Boundaries may be generalized for this map scale. Private lands within government reservations may not be shown. Obtain permission before entering private lands.

Imagery.....	NAIP, October	2014
Roads.....	U.S. Census Bureau, 2015	2016
Roads within US Forest Service Lands.....	FSFstop	Data
	with limited Forest Service updates, 2012	2016
Names.....	GNIS,	2016
Hydrography.....	National Hydrography Dataset,	2014
Contours.....	National Elevation Dataset,	2000
Boundaries.....	Multiple sources; see metadata file 1972	2016
Public Land Survey System.....	BLM,	2016
Wetlands.....	FWS National Wetlands Inventory 1977	2014



SCALE 1:24 000



CONTOUR INTERVAL 40 FEET  
NORTH AMERICAN VERTICAL DATUM OF 1988

This map was produced to conform with the  
National Geospatial Program US Topo Product Standard, 2011.  
A metadata file associated with this product is draft version 0.6.19



QUADRANGLE LOCATIC







1	2	3
4		5
6	7	8

- 1 Honey Boy Ranch
- 2 El Porvenir
- 3 Montezuma
- 4 Lower Colonias
- 5 Ojitos Frios
- 6 North San Ysidro
- 7 San Jose
- 8 Tecolote

ADJOINING QUADRANGLES

- 1 Honey Boy Ranch
- 2 El Porvenir
- 3 Montezuma
- 4 Lower Colonias
- 5 Ojitos Frios
- 6 North San Ysidro
- 7 San Jose
- 8 Tecolote

## ROAD CLASSIFICATION

Expressway		Local Connector	
Secondary Hwy		Local Road	
Ramp		4WD	
 Interstate Route	 US Route	 State Route	
 FS Primary Route	 FS Passenger Route	 FS High Clearance Route	

Check with local Forest Service unit  
for current travel conditions and restrictions.

SAN GERONIMO, NM  
2017

