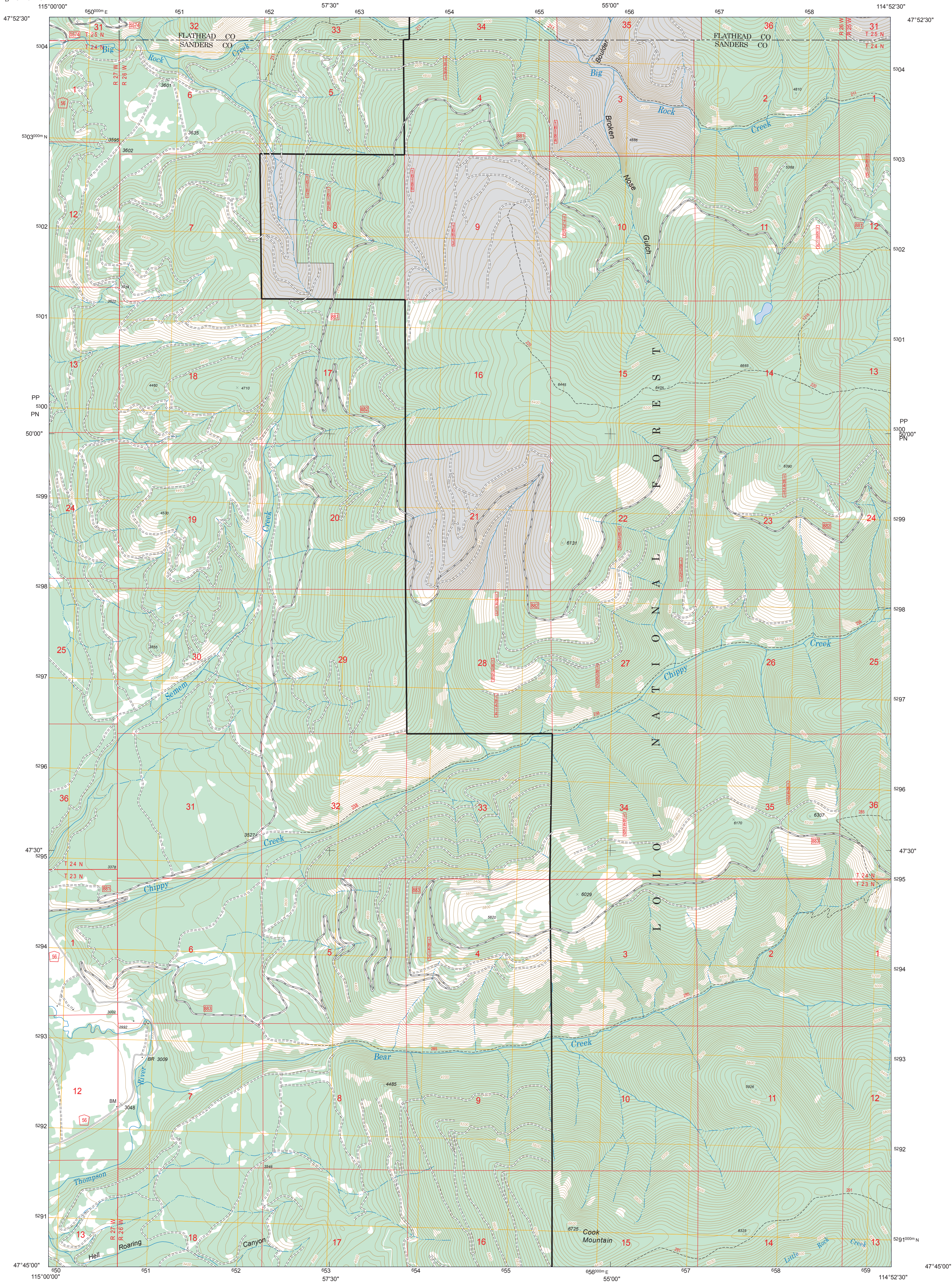




United States Forest  
Department of Service  
Agriculture

COOK MOUNTAIN QUADRANGLE  
MONTANA  
7.5-MINUTE SERIES (TOPOGRAPHIC)



Produced by the USDA Forest Service.  
North American Datum of 1983 (NAD 83).  
Projection and 1,000-meter ties: Universal Transverse Mercator, zone 11.

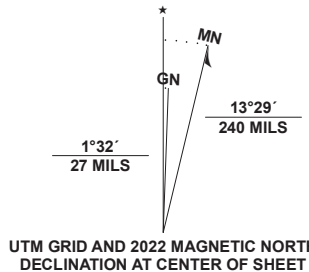
Full Revision of Forest Service lands 1999  
Updates to Transportation 1999  
Updates to Boundaries 1999

Non-National Forest System lands within the National Forest as of 1999.  
Inholdings may exist in other National or State reservations.

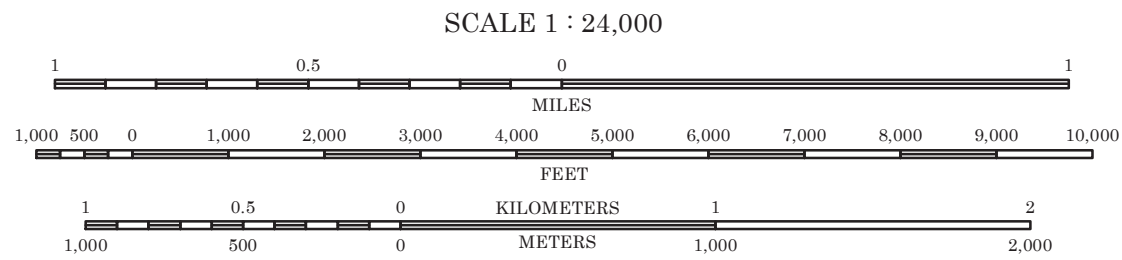
This is not a legal document. Public lands are subject to change and leasing, and may have access restrictions. Not all roads and trails on this map are open to motor vehicle use. Check with appropriate officials and obtain appropriate regulatory maps and information. Obtain permission before entering private lands.

This map product uses the most current data available in the USDA Forest Service cartographic database. Modifications, updates, and corrections may be made at any time. Print quality is determined by the output device used when producing a hardcopy product.

USDA is an equal opportunity provider,  
employer, and lender



U.S. National Grid	
100,000 - m Square ID	
PP	00
PN	
Grid Zone Designation	11T



MOTOR VEHICLE USE MAP (MVUM)

The MVUM is a legal enforceable document that identifies the roads, trails, and areas where motor vehicle use is allowed in a Forest Service administrative unit or ranger district. MVUMs are released each year. It is the responsibility of motor vehicle users to acquire the current MVUM. MVUMs are available FREE at Forest Service offices and at [www.fs.fed.us/recreation/programs/ohv/ohv\\_maps.shtml](http://www.fs.fed.us/recreation/programs/ohv/ohv_maps.shtml)



ADJOINING QUADRANGLES		
Bond	Shredder Creek	Marr Peak
Richards Peak	Cook Mountain	Basco Peak
Calico Creek	Lanman Creek	Camp Peak

HIGHWAYS AND ROADS	
Interstate.....	5
U.S. ....	105
State.....	78
County.....	6
National Forest, suitable for passenger cars.....	105
National Forest, suitable for high clearance vehicles.....	80
National Forest Trail.....	384
Highway.....	
Road, Unspecified.....	
Road, Paved.....	
Road, Gravel.....	
Road, Dirt.....	
Unimproved.....	
Road, Closed.....	
Trail.....	
Gate/Barrier.....	
Check with local Forest Service unit for current travel conditions and restrictions	

This product generated and downloaded on 1/18/2023

COOK MOUNTAIN, MT  
(FSTOPO LEGACY)