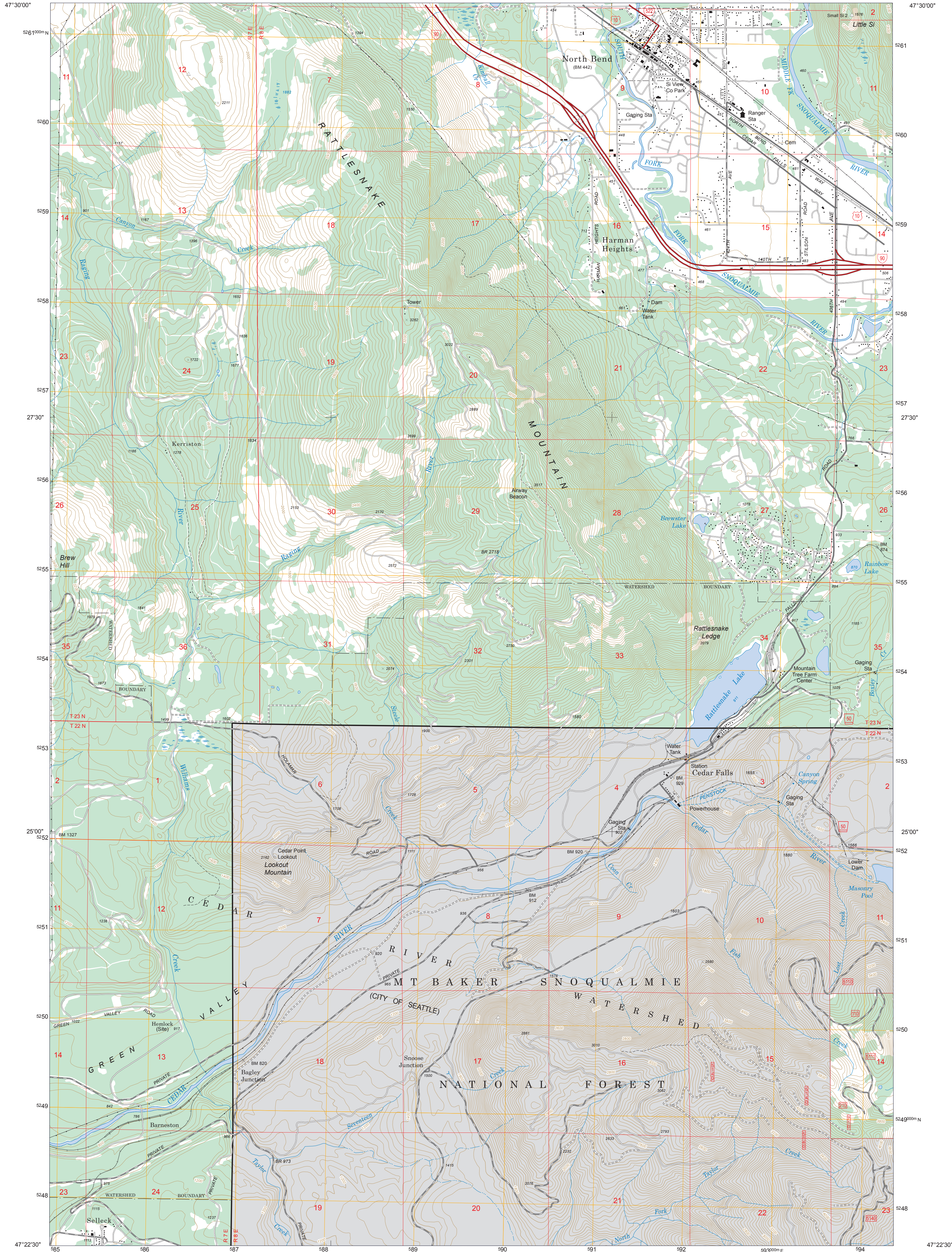




## 7.5-MINUTE SERIES (TOPOGRAPHIC)

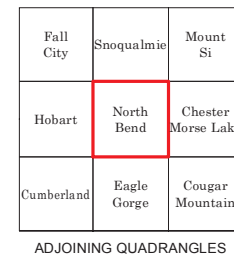


Full Revision of Forest Service lands 1994  
Updates to Transportation 1994  
Updates to Boundaries 1994








This map product uses the most current data available in the USDA Forest Service cartographic database. Modifications, updates, and corrections may be made at any time. Print quality is determined by the output device used when producing a hardcopy product.

USDA is an equal opportunity provider,  
employer, and lender

The MVUM is a legal enforceable document that identifies the roads, trails, and areas where motor vehicle use is allowed in a Forest Service administrative unit or ranger district. MVUMs are reissued each year. It is the responsibility of motor vehicle users to acquire the current MVUM. MVUMs are available FREE at Forest Service offices and at [www.fs.fed.us/recreation/programs/ohv/ohv\\_mans.shtml](http://www.fs.fed.us/recreation/programs/ohv/ohv_mans.shtml)



## HIGHWAYS AND ROADS

Interstate.....	5	Highway	
U.S. ....	105	Road, Unspecified.....	
State.....	79	Road, Paved.....	
County.....	6	Road, Gravel.....	
		Road, Dirt.....	
National Forest, suitable for passenger cars.....	105	Unimproved.....	
	60	Road, Closed.....	
National Forest, suitable for high clearance vehicles.....	105	Trail.....	
	60	Gate: Barred.....	
National Forest Trail.....	384	Check with local Forest Service unit for current travel conditions and restrictions	

This product generated and downloaded on 1/20/2023

NORTH BEND, WA  
(FSTOPO LEGACY)