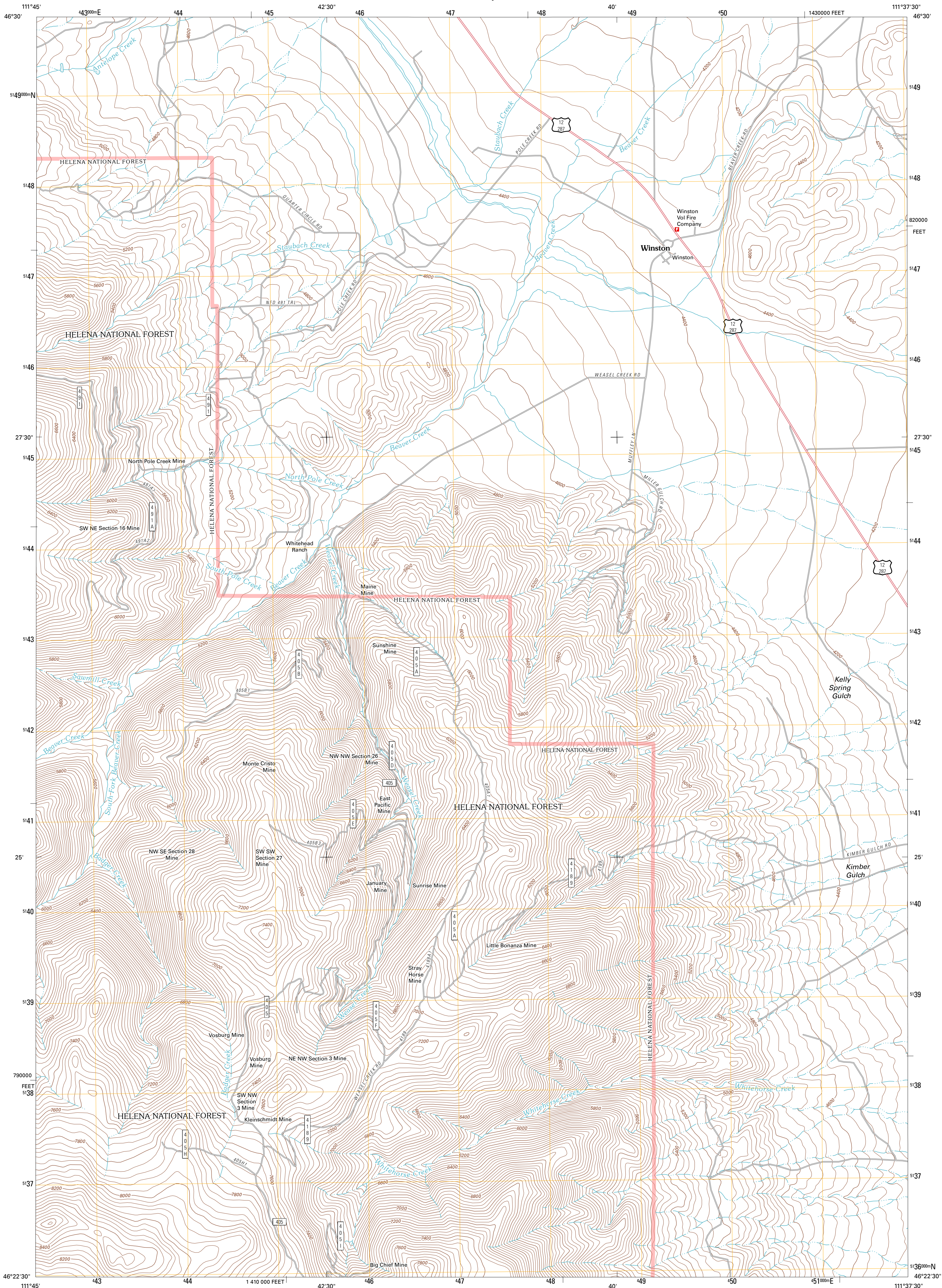




U.S. DEPARTMENT OF THE INTERIOR
U. S. GEOLOGICAL SURVEY

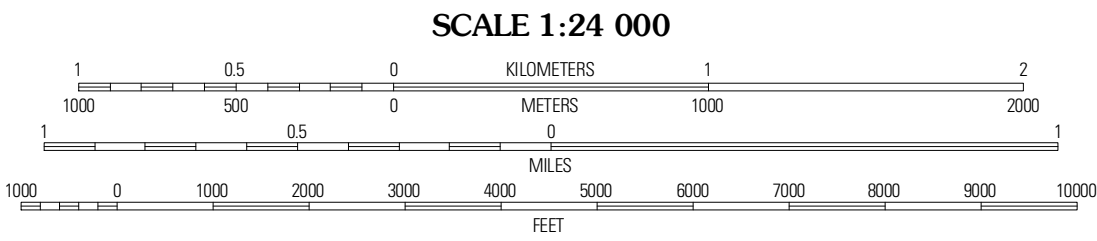
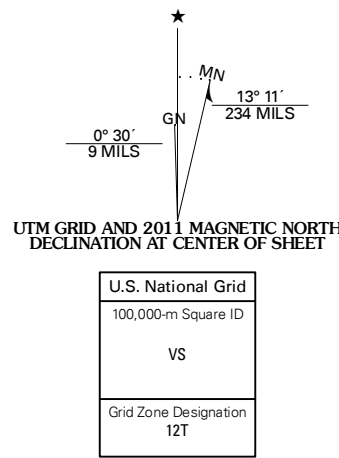


WINSTON QUADRANGLE
MONTANA-BROADWATER CO.
7.5-MINUTE SERIES

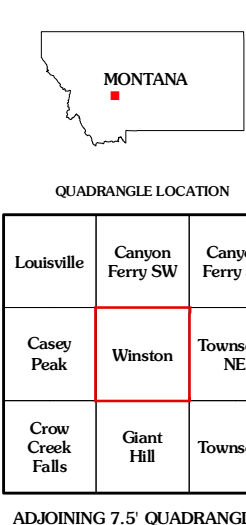


Produced by the United States Geological Survey
North American Datum of 1983 (NAD83)
World Geodetic System of 1984 (WGS84). Projection and
1 000-meter grid: Universal Transverse Mercator, Zone 12T
10 000-foot ticks: Montana Coordinate System of 1983

Imagery.....NAIP, August 2009
Roads.....2006-2010 Tele Atlas
Roads within US Forest Service Lands.....FS Topo Data
with limited Forest Service updates, 2009
Names.....GNIS, 2010
Hydrography.....National Hydrography Dataset, 2009
Contours.....National Elevation Dataset, 2005
Boundaries.....Census, IBWC, IBC, USGS, 1972 - 2010



CONTOUR INTERVAL 40 FEET
NORTH AMERICAN VERTICAL DATUM OF 1988
This map was produced to conform with version 0.5.10
of the USGS US Topo Product Standard.
A metadata file associated with this product is draft version 0.5.16



ROAD CLASSIFICATION
Interstate Route
US Route
Ramp
State Route
Local Road
4WD
Interstate Route
US Route
FS Passenger Route
FS High Clearance Route
Check with local Forest Service unit
for current travel conditions and restrictions.

WINSTON, MT
2011