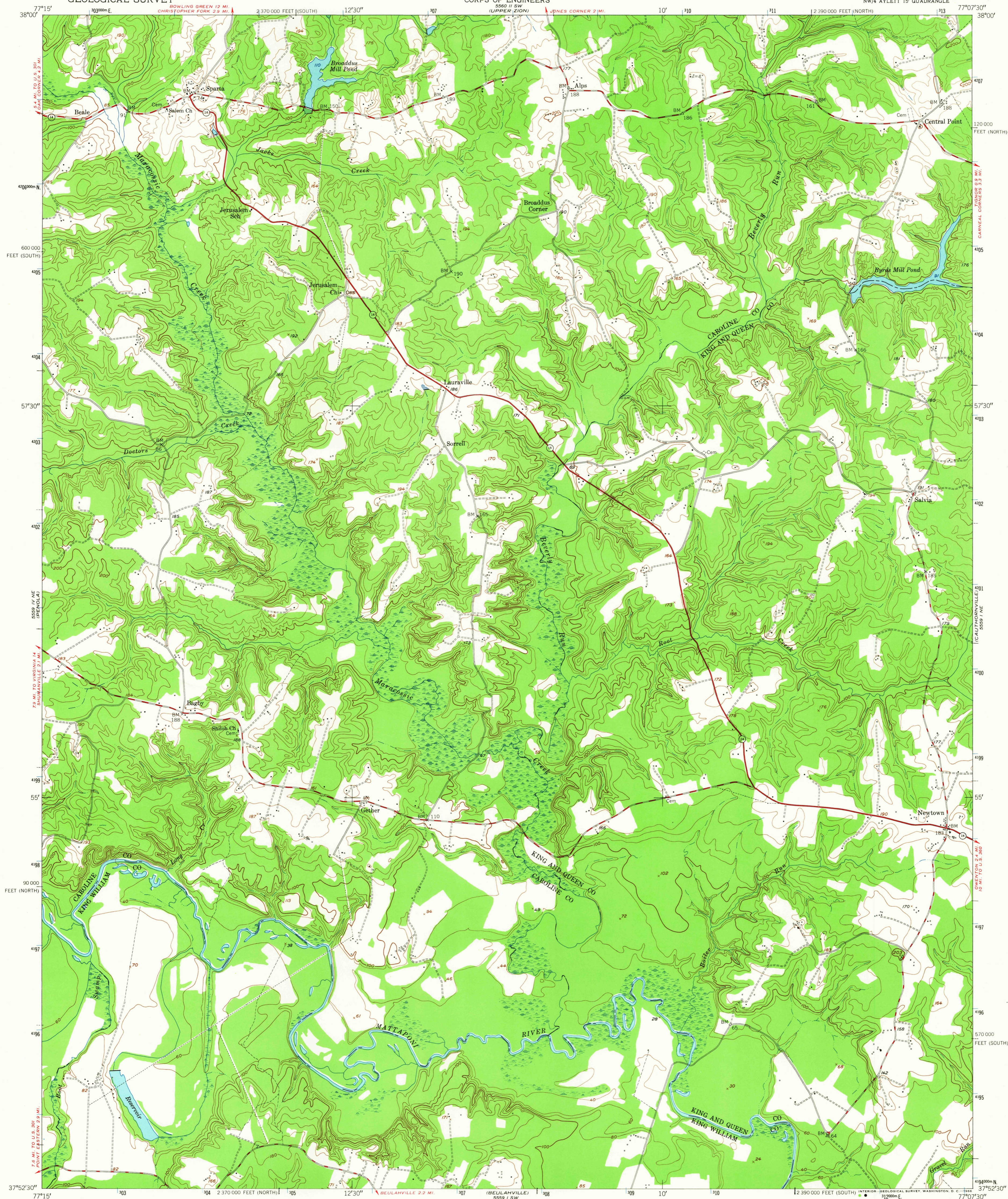


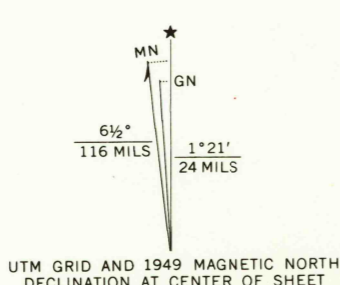
UNITED STATES
DEPARTMENT OF THE INTERIOR
GEOLOGICAL SURVEY

UNITED STATES
DEPARTMENT OF THE ARMY
CORPS OF ENGINEERS

SPARTA QUADRANGLE
VIRGINIA
7.5 MINUTE SERIES (TOPOGRAPHIC)
NW/4 AYLETT 15' QUADRANGLE



Map by the Army Map Service
Published for civil use by the Geological Survey
Control by USC&GS and USGS
Topography from aerial photographs by multiplex methods
Aerial photographs taken 1947. Field check 1949
Polyconic projection. 1927 North American datum
10,000-foot grids based on Virginia coordinate system,
north and south zones
Unchecked elevations are shown in brown
1000-meter Universal Transverse Mercator grid ticks,
zone 18, shown in blue



USGS
Historical File
Topographic Division

ROAD CLASSIFICATION
Heavy-duty... Light-duty...
Medium-duty... Unimproved dirt...
U. S. Route... State Route...

U.S.G.S.
FILE COPY
TOPOGRAPHIC DIVISION

SPARTA, VA.
NW/4 AYLETT 15' QUADRANGLE
N3752.5-W7707.5/7.5

EDITION OF 1951
AMS 5559 I NW-SERIES V834

THIS MAP COMPLIES WITH NATIONAL MAP ACCURACY STANDARDS
FOR SALE BY U.S. GEOLOGICAL SURVEY, WASHINGTON, D. C. 20242
A FOLDER DESCRIBING TOPOGRAPHIC MAPS AND SYMBOLS IS AVAILABLE ON REQUEST

DEC 17 1965

1650