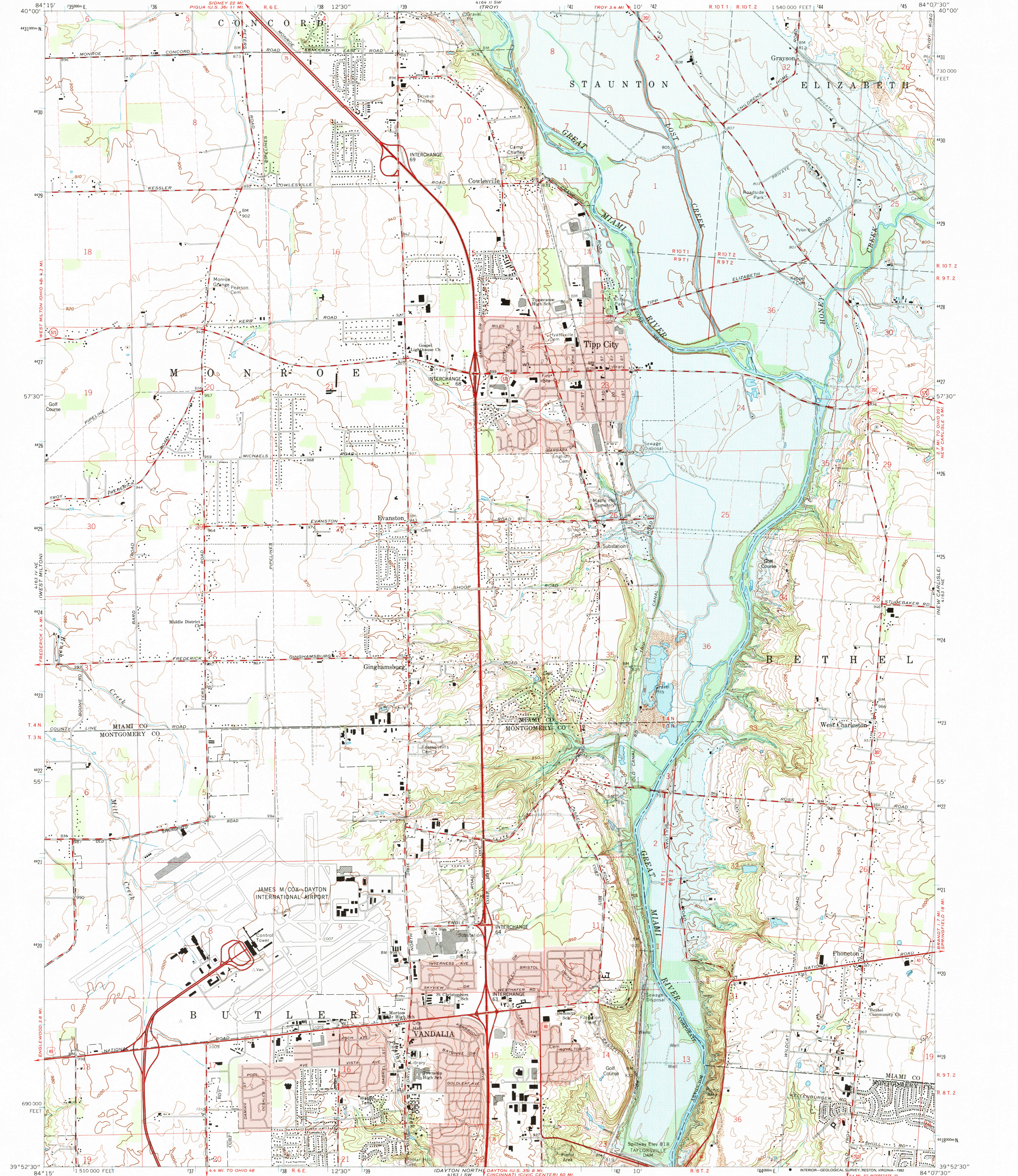


UNITED STATES
DEPARTMENT OF THE INTERIOR
GEOLOGICAL SURVEY

TIPP CITY QUADRANGLE
OHIO
7.5 MINUTE SERIES (TOPOGRAPHIC)



Maped, edited, and published by the Geological Survey in cooperation with Army Map Service. Revised in cooperation with State of Ohio agencies. Control by USGS and NOS/NOAA. Topography by photogrammetric methods from aerial photography taken 1954. Field checked 1955. Revised 1965. Polyconic projection. 10,000-foot grid ticks based on Ohio coordinate system, south zone. 1000-meter Universal Transverse Mercator grid ticks, zone 16, shown in blue. 1927 North American Datum. The difference between 1927 North American Datum and North American Datum of 1983 (NAD 83) for 7.5-minute intersections is given in USGS Bulletin 1875. The NAD 83 is shown by dashed corner ticks. Fine red dashed lines indicate selected fence and field lines where generally visible on aerial photographs. This information is unchecked. Red tint indicates areas in which only landmark buildings are shown. Areas covered by dashed light-blue pattern are subject to controlled inundation to 818 feet. There may be private inholdings within the boundaries of the National or State reservations shown on this map.

THIS MAP COMPLIES WITH NATIONAL MAP ACCURACY STANDARDS FOR SALE BY U.S. GEOLOGICAL SURVEY. DENVER, COLORADO 80225 OR RESTON, VIRGINIA 22092. A FOLDER DESCRIBING TOPOGRAPHIC MAPS AND SYMBOLS IS AVAILABLE ON REQUEST.

Revisions compiled in cooperation with State of Ohio agencies from aerial photographs taken 1988 and other sources. Contours not revised. This information not field checked. Map edited 1992.

ROAD CLASSIFICATION
Heavy-duty ——— Light-duty ———
Medium-duty ——— Unimproved dirt ———
Interstate Route — U.S. Route — State Route —

CONTOUR INTERVAL 10 FEET
NATIONAL GEODETIC VERTICAL DATUM OF 1929

UTM GRID AND 1992 MAGNETIC NORTH
DECLINATION AT CENTER OF SHEET

QUADRANGLE LOCATION

TIPP CITY, OHIO
39084-H2-TF-024
1965
REVISED 1992
DMA 4163 I NW—SERIES V852

USGS AND HISTORICAL MAP ARCHIVES
OCT 05 1992
REC'D FILE COPY