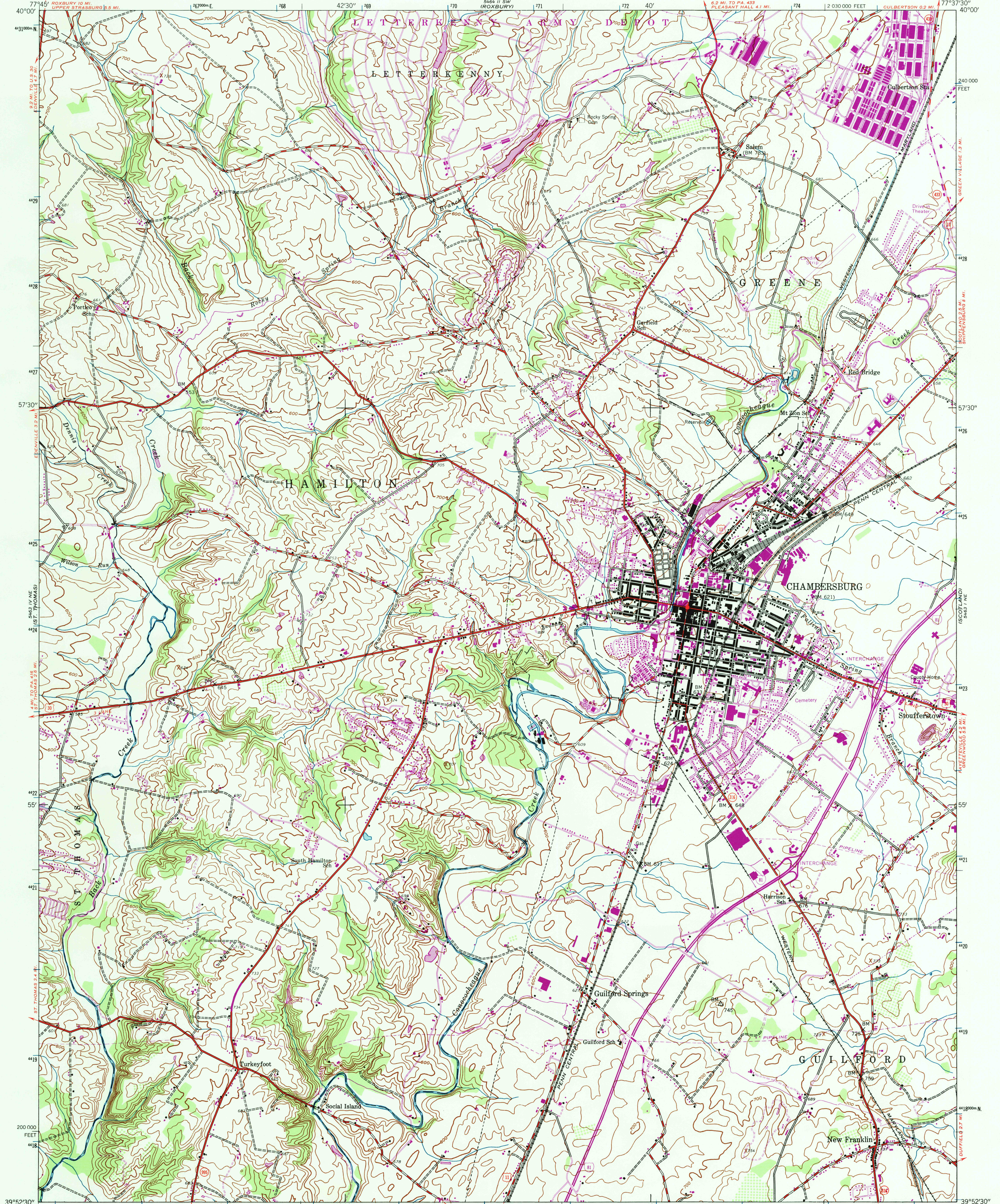


UNITED STATES
DEPARTMENT OF THE INTERIOR
GEOLOGICAL SURVEY

CHAMBERSBURG QUADRANGLE
PENNSYLVANIA—FRANKLIN CO.
7.5 MINUTE SERIES (TOPOGRAPHIC)
NW/4 CHAMBERSBURG 15' QUADRANGLE



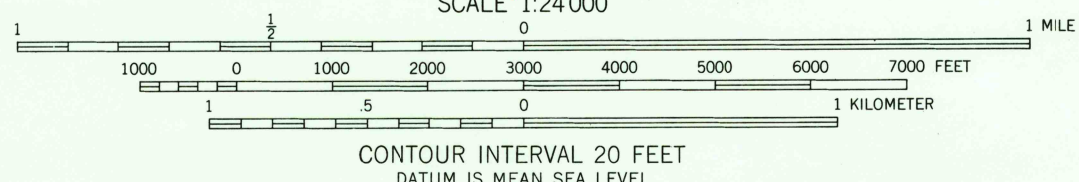
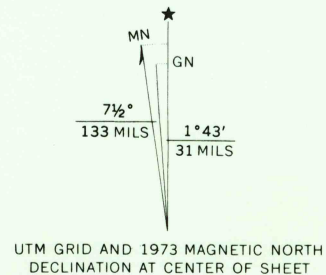
Mapped by the Army Map Service
Published for civil use by the Geological Survey

Control by USGS, USC&GS, and USFS

Topography from aerial photographs by photogrammetric methods
Aerial photographs taken 1943. Field check 1944

Polycyclic projection. 1927 North American datum
10,000-foot grid based on Pennsylvania coordinate system, south zone
1000-meter Universal Transverse Mercator grid ticks,
zone 18, shown in blue

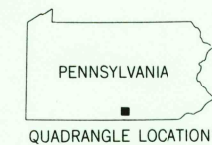
Revisions shown in purple compiled by the Geological Survey in
cooperation with State of Pennsylvania agencies, from aerial
photographs taken 1968 and 1973. This information not field checked



THIS MAP COMPLIES WITH NATIONAL MAP ACCURACY STANDARDS
FOR SALE BY U.S. GEOLOGICAL SURVEY
DENVER, COLORADO 80225, OR RESTON, VIRGINIA 22092
A FOLDER DESCRIBING TOPOGRAPHIC MAPS AND SYMBOLS IS AVAILABLE ON REQUEST

Map photoinspected 1984
No major culture or drainage changes observed

ROAD CLASSIFICATION
Heavy-duty ——— Light-duty ———
Medium-duty ——— Unimproved dirt ———
Interstate Route ——— U.S. Route ——— State Route ———



CHAMBERSBURG, PA.
NW/4 CHAMBERSBURG 15' QUADRANGLE
N3952.5—W7737.5/7.5
PHOTOINSPECTED 1984
1944
PHOTOREVISED 1968 AND 1973
AMS 5463 I NW—SERIES V831

