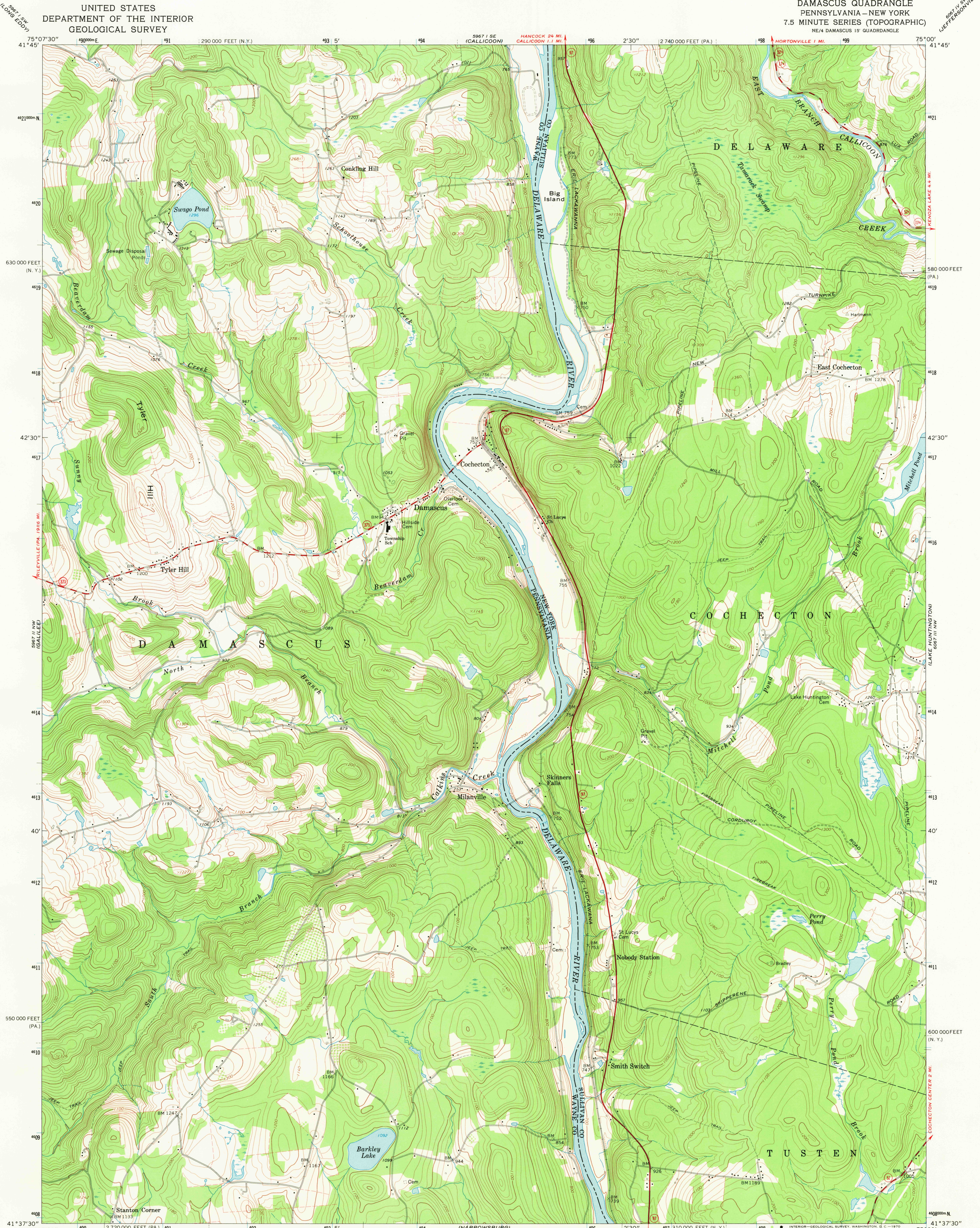
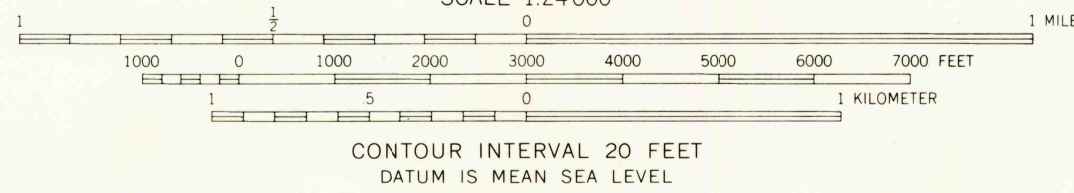
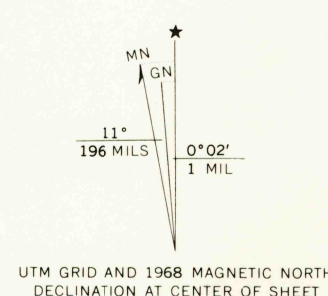


UNITED STATES
DEPARTMENT OF THE INTERIOR
GEOLOGICAL SURVEY

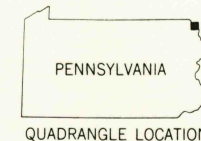
DAMASCUS QUADRANGLE
PENNSYLVANIA—NEW YORK
7.5 MINUTE SERIES (TOPOGRAPHIC)
NE/4 DAMASCUS 15' QUADRANGLE



Mapped, edited, and published by the Geological Survey
in cooperation with New York Department of Transportation
Control by USGS and USC&GS
Topography by photogrammetric methods from aerial
photographs taken 1965 and 1966. Field checked 1968
Polyconic projection, 1927 North American datum
10,000-foot grids based on Pennsylvania coordinate system,
north zone, and New York coordinate system, east zone
1000-meter Universal Transverse Mercator grid ticks,
zone 18, shown in blue
Fine red dashed lines indicate selected fence and field lines where
generally visible on aerial photographs. This information is unchecked



USGS
Historical File
Topographic Division



ROAD CLASSIFICATION
Primary highway, all weather, hard surface
Secondary highway, all weather, hard surface
Light-duty road, all weather, improved surface
Unimproved road, fair or dry weather
State Route

U.S.G.S.
FILE COPY
TOPOGRAPHIC DIVISION

DAMASCUS, PA.—N. Y.
NE/4 DAMASCUS 15' QUADRANGLE
N4137.5—W7500/7.5
1968
AMS 5967 II NE—SERIES V831

NOV 17 1970