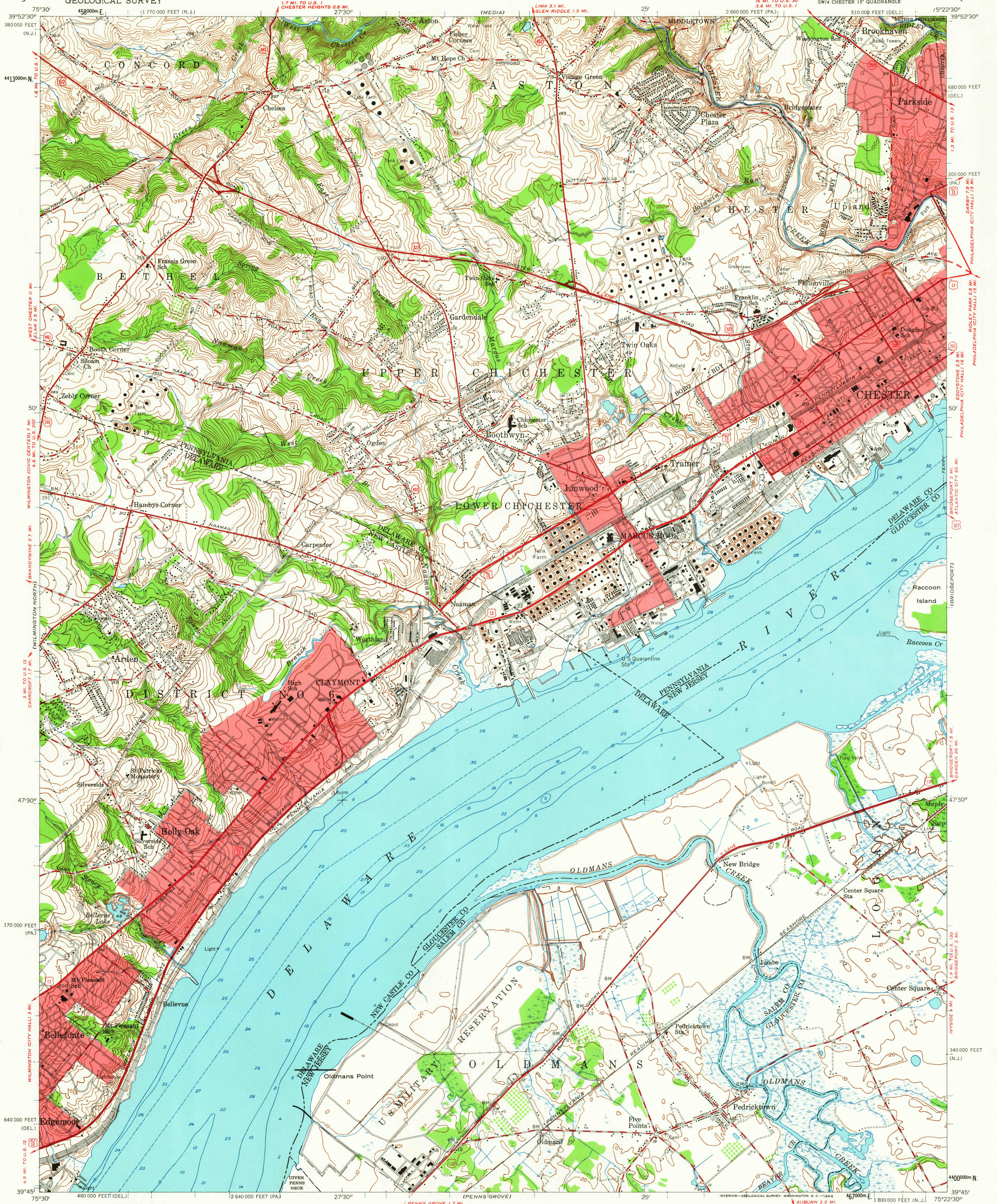


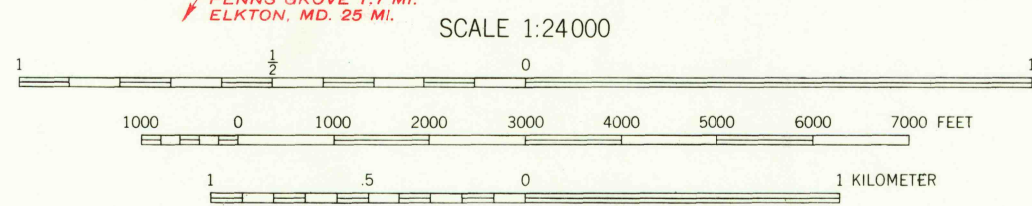
UNITED STATES
DEPARTMENT OF THE INTERIOR
GEOLOGICAL SURVEY

MARCUS HOOK QUADRANGLE
PENNSYLVANIA—DELAWARE—NEW JERSEY
7.5 MINUTE SERIES (TOPOGRAPHIC)
SW/4 CHESTER 15' QUADRANGLE



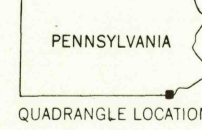
Mapped, edited, and published by the Geological Survey
Control by USGS, USC&GS, USCE, and New Jersey Geodetic Survey
Topography by planetable surveys 1939. Revised 1953
Hydrography from USC&GS chart 295 dated 1943
Polyconic projection. 1927 North American datum
10,000-foot grids based on Pennsylvania coordinate system,
south zone, Delaware coordinate system, and New Jersey
coordinate system
Red tint indicates areas in which only
landmark buildings are shown
1000-meter Universal Transverse Mercator grid ticks,
zone 18, shown in blue

TRUE NORTH
MAGNETIC NORTH
APPROXIMATE MEAN
DECLINATION, 1953



SCALE 1:24000
CONTOUR INTERVAL 10 FEET
DATUM IS MEAN SEA LEVEL
DEPTH CURVES AND SOUNDINGS IN FEET—DATUM IS MEAN LOW WATER
SHORELINE SHOWN REPRESENTS THE APPROXIMATE LINE OF MEAN HIGH WATER
THE MEAN RANGE OF TIDE IS 5.3 FEET
THIS MAP COMPLIES WITH NATIONAL MAP ACCURACY STANDARDS
FOR SALE BY U. S. GEOLOGICAL SURVEY, WASHINGTON 25, D. C.
A FOLDER DESCRIBING TOPOGRAPHIC MAPS AND SYMBOLS IS AVAILABLE ON REQUEST

USGS
Historical File
Topographic Division



ROAD CLASSIFICATION
1954
Heavy-duty ——— Light-duty ———
Medium-duty ——— Unimproved dirt ———
U. S. Route ——— State Route ———

MARCUS HOOK, PA.—DEL.—N. J.
SW/4 CHESTER 15' QUADRANGLE
N 3945—W 7522.5/7.5

1953

5820

MAR 10 1964