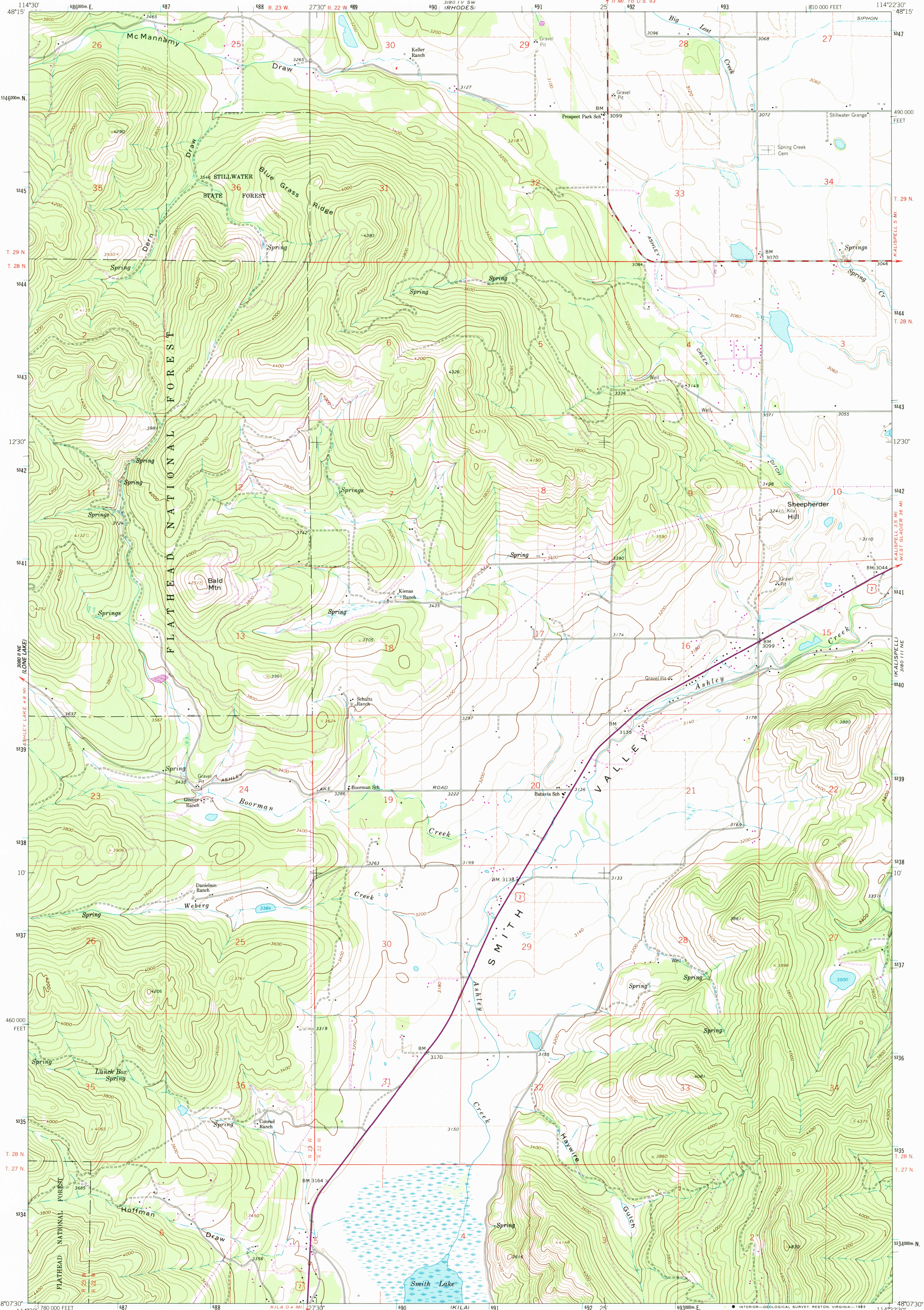


UNITED STATES  
DEPARTMENT OF THE INTERIOR  
GEOLOGICAL SURVEY

BLUE GRASS RIDGE QUADRANGLE  
MONTANA—FLATHEAD CO.  
7.5 MINUTE SERIES (TOPOGRAPHIC)



Mapped, edited, and published by the Geological Survey

Control by USGS and NOS/NOAA

Topography by photogrammetric methods from aerial

photographs taken 1956. Field checked 1962

Polyconic projection. 1927 North American datum

10,000-foot grid based on Montana coordinate system, north zone

1000-meter Universal Transverse Mercator grid ticks,

zone 11, shown in blue

Fine red dashed lines indicate selected fence lines

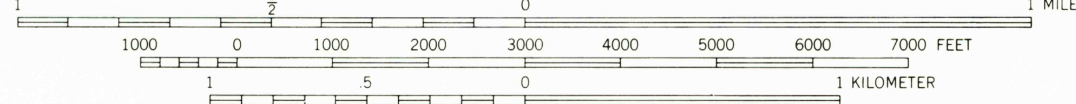
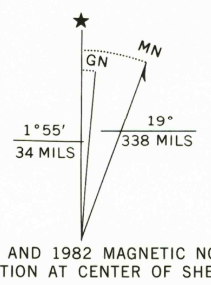
There may be private inholdings within the boundaries

of the National or State reservations shown on this map

To place on the predicted North American Datum 1983

move the projection lines 12 meters north and

71 meters east as shown by dashed corner ticks



CONTOUR INTERVAL 40 FEET

DOTTED LINES REPRESENT 20-FOOT CONTOURS

NATIONAL GEODETIC VERTICAL DATUM OF 1929



QUADRANGLE LOCATION

ROAD CLASSIFICATION

Medium-duty ——— Light-duty ———

Unimproved dirt =====

U.S. Route

Primary highway, hard surface

BLUE GRASS RIDGE, MONT.

N4807.5-W11422.5/7.5

1962

PHOTOREVISED 1982

DMA 5180 III NW-SERIES V894

DEC 30 1986

RETURN TO:  
USGS M&D HISTORICAL MAP ARCHIVES