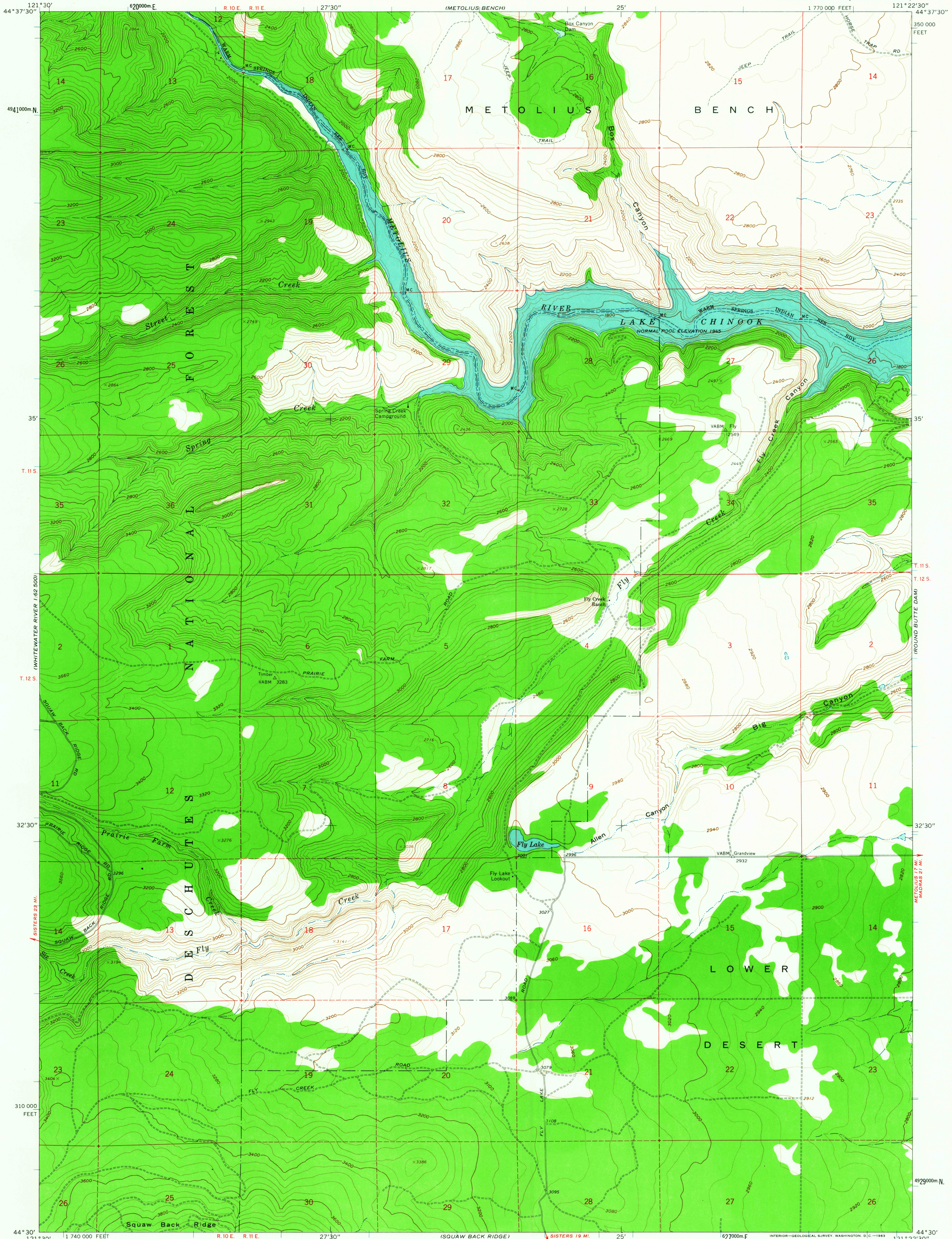
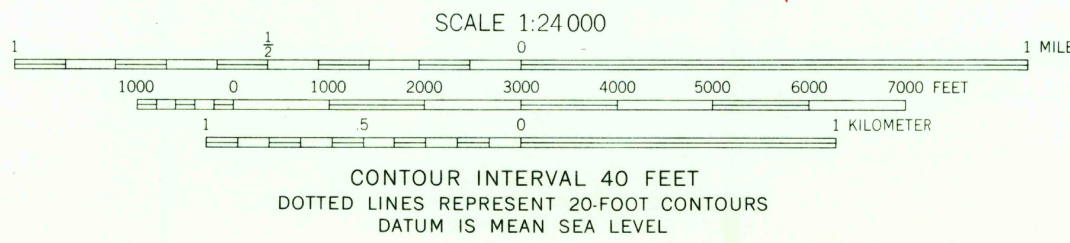
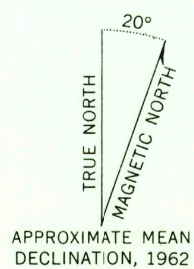


UNITED STATES  
DEPARTMENT OF THE INTERIOR  
GEOLOGICAL SURVEY

FLY CREEK QUADRANGLE  
OREGON—JEFFERSON CO.  
7.5 MINUTE SERIES (TOPOGRAPHIC)



Mapped, edited, and published by the Geological Survey  
Control by USGS and USC&GS  
Topography by photogrammetric methods from aerial  
photographs taken 1957. Field checked 1962  
Polyconic projection. 1927 North American datum  
10,000-foot grid based on Oregon coordinate system, north zone  
1000-meter Universal Transverse Mercator grid ticks,  
zone 10, shown in blue



ROAD CLASSIFICATION  
Light-duty ————— Unimproved dirt - - - - -

USGS  
Historical File  
Topographic Division

FLY CREEK, OREG.  
N4430—W12122.5/7.5

1962

THIS MAP COMPLIES WITH NATIONAL MAP ACCURACY STANDARDS  
FOR SALE BY U. S. GEOLOGICAL SURVEY, DENVER 25, COLORADO OR WASHINGTON 25, D. C.  
A FOLDER DESCRIBING TOPOGRAPHIC MAPS AND SYMBOLS IS AVAILABLE ON REQUEST

HISTORICAL  
2720

JAN - 8 1964