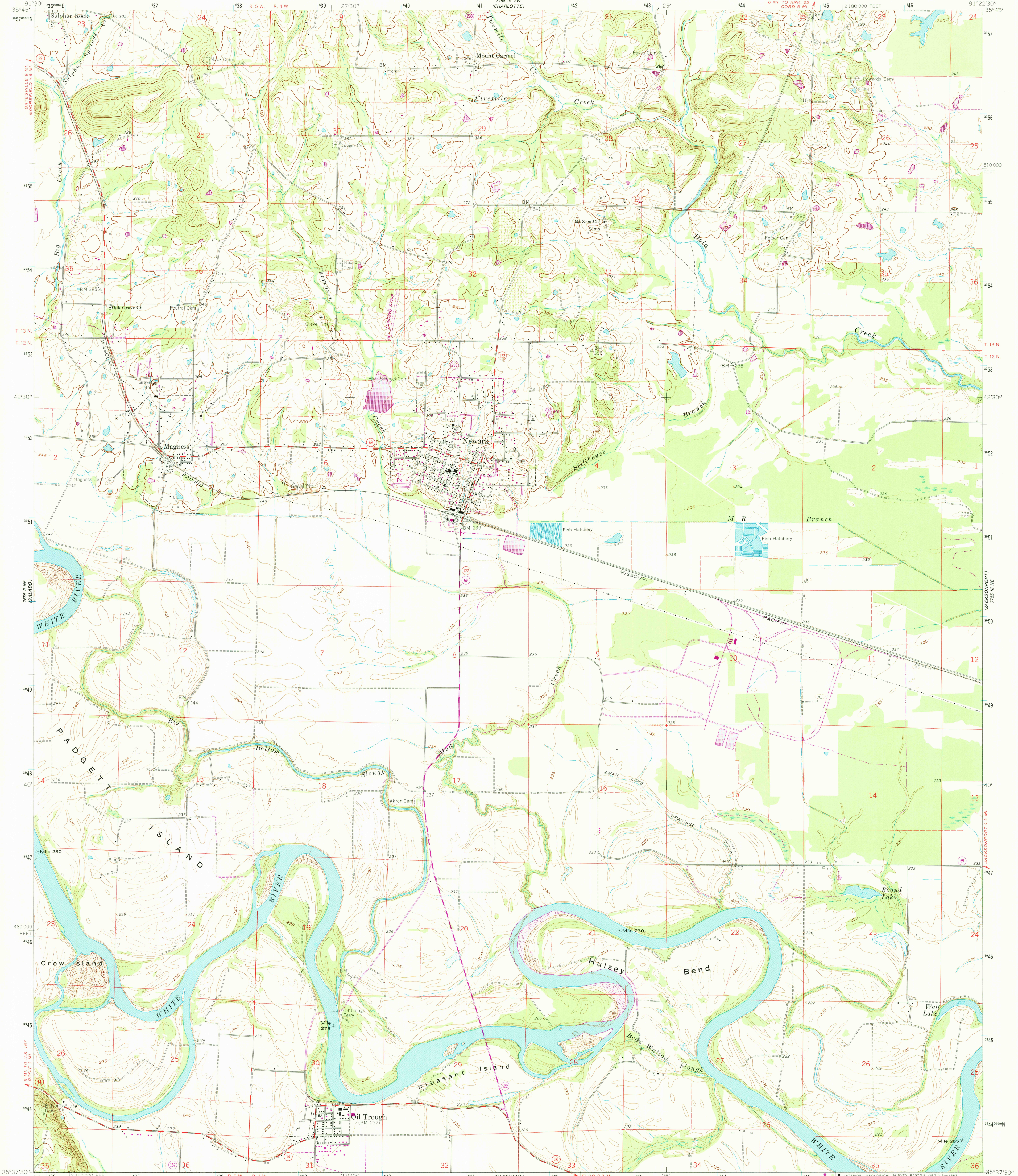
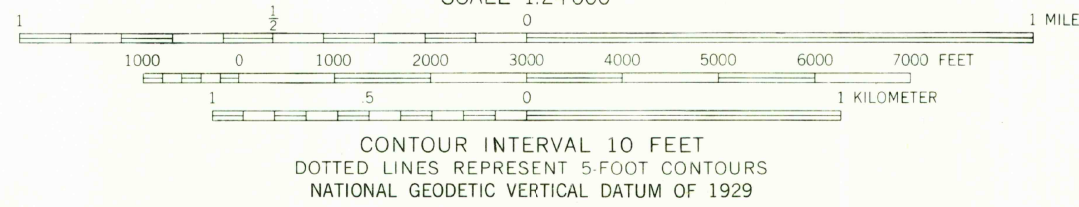
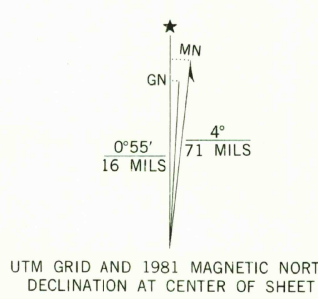


UNITED STATES
DEPARTMENT OF THE INTERIOR
GEOLOGICAL SURVEY

NEWARK QUADRANGLE
ARKANSAS-INDEPENDENCE CO.
7.5 MINUTE SERIES (TOPOGRAPHIC)
NW 1/4 NEWPORT 15' QUADRANGLE



Maped, edited, and published by the Geological Survey
in cooperation with State of Arkansas,
Geological and Conservation Commission
Control by USGS, USC&GS, and USCE
Topography by photogrammetric methods from aerial
photographs taken 1961 and planetable surveys 1956 and 1962
Polyconic projection. 1927 North American datum
10,000-foot grid based on Arkansas coordinate system, north zone
1000-meter Universal Transverse Mercator grid ticks,
zone 15, shown in blue
Fine red dashed lines indicate selected fence and field lines where
generally visible on aerial photographs. This information is unchecked
To place on the predicted North American Datum 1983
move the projection lines 5 meters south and
12 meters east as shown by dashed corner ticks



THIS MAP COMPLIES WITH NATIONAL MAP ACCURACY STANDARDS
FOR SALE BY U. S. GEOLOGICAL SURVEY, DENVER, COLORADO 80225, OR RESTON, VIRGINIA 22092
AND ARKANSAS GEOLOGICAL COMMISSION, LITTLE ROCK, ARKANSAS 72204
A FOLDER DESCRIBING TOPOGRAPHIC MAPS AND SYMBOLS IS AVAILABLE ON REQUEST



Revisions shown in purple compiled from aerial
photographs taken 1980. Map edited 1981
This information not field checked

ROAD CLASSIFICATION
Medium-duty ——— Light-duty ———
Unimproved dirt ———
State Route

NEWARK, ARK.
NW 1/4 NEWPORT 15' QUADRANGLE
N 3537.5—W 9122.5/7.5
1962
PHOTOREVISED 1981
DMA 7755 III NW-SERIES V884

APR 1 1982

260