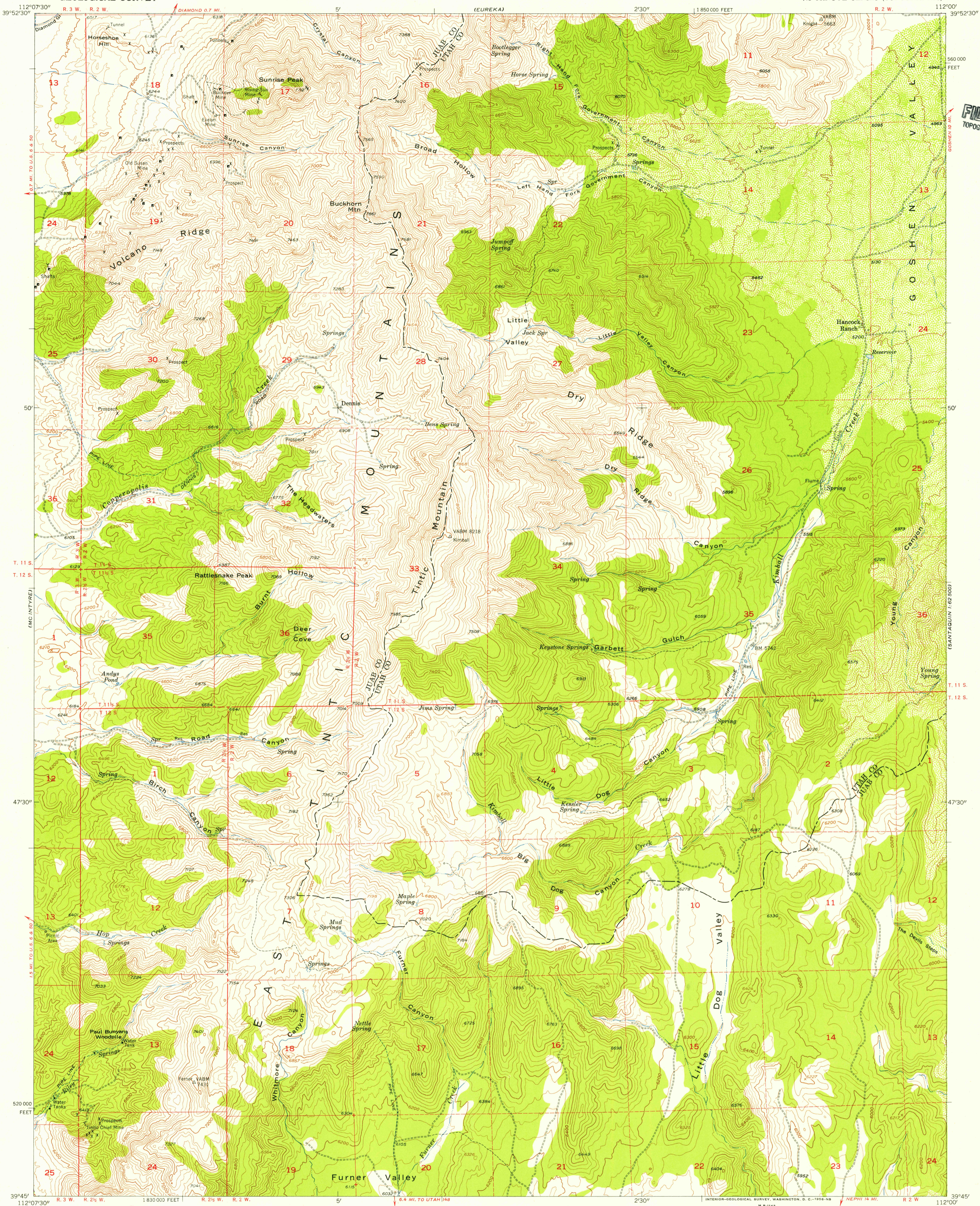


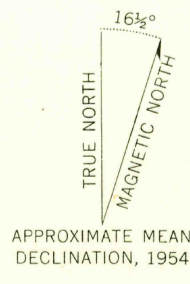
UNITED STATES
DEPARTMENT OF THE INTERIOR
GEOLOGICAL SURVEY

TINTIC MOUNTAIN QUADRANGLE
UTAH
7.5 MINUTE SERIES (TOPOGRAPHIC)



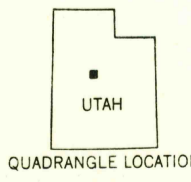
U.S.G.S.
FILE COPY
TOPOGRAPHIC

Mapped, edited, and published by the Geological Survey
Control by USGS and USC&GS
Topography from aerial photographs by multiplex methods
Aerial photographs taken 1950. Field check 1954
Polyconic projection. 1927 North American datum
10,000-foot grid based on Utah coordinate system, central zone
Dashed (and) lines indicate approximate locations
Unchecked elevations are shown in brown



SCALE 1:24000
1 0 1000 2000 3000 4000 5000 6000 7000 FEET
1 0 5 10 KILOMETER
CONTOUR INTERVAL 40 FEET
DATUM IS MEAN SEA LEVEL
THIS MAP COMPLIES WITH NATIONAL MAP ACCURACY STANDARDS
FOR SALE BY U. S. GEOLOGICAL SURVEY, FEDERAL CENTER, DENVER, COLORADO OR WASHINGTON 25, D. C.
A FOLDER DESCRIBING TOPOGRAPHIC MAPS AND SYMBOLS IS AVAILABLE ON REQUEST

USGS
Historical File
Topographic Division



ROAD CLASSIFICATION
Heavy-duty ——— Light-duty ———
Medium-duty ——— Unimproved dirt ———
U. S. Route ——— State Route ———

U.S.G.S.
FILE COPY
TOPOGRAPHIC DIVISION

TINTIC MOUNTAIN, UTAH
N 3945-W 11200/7.5
1954

MAR 2 1956

1730