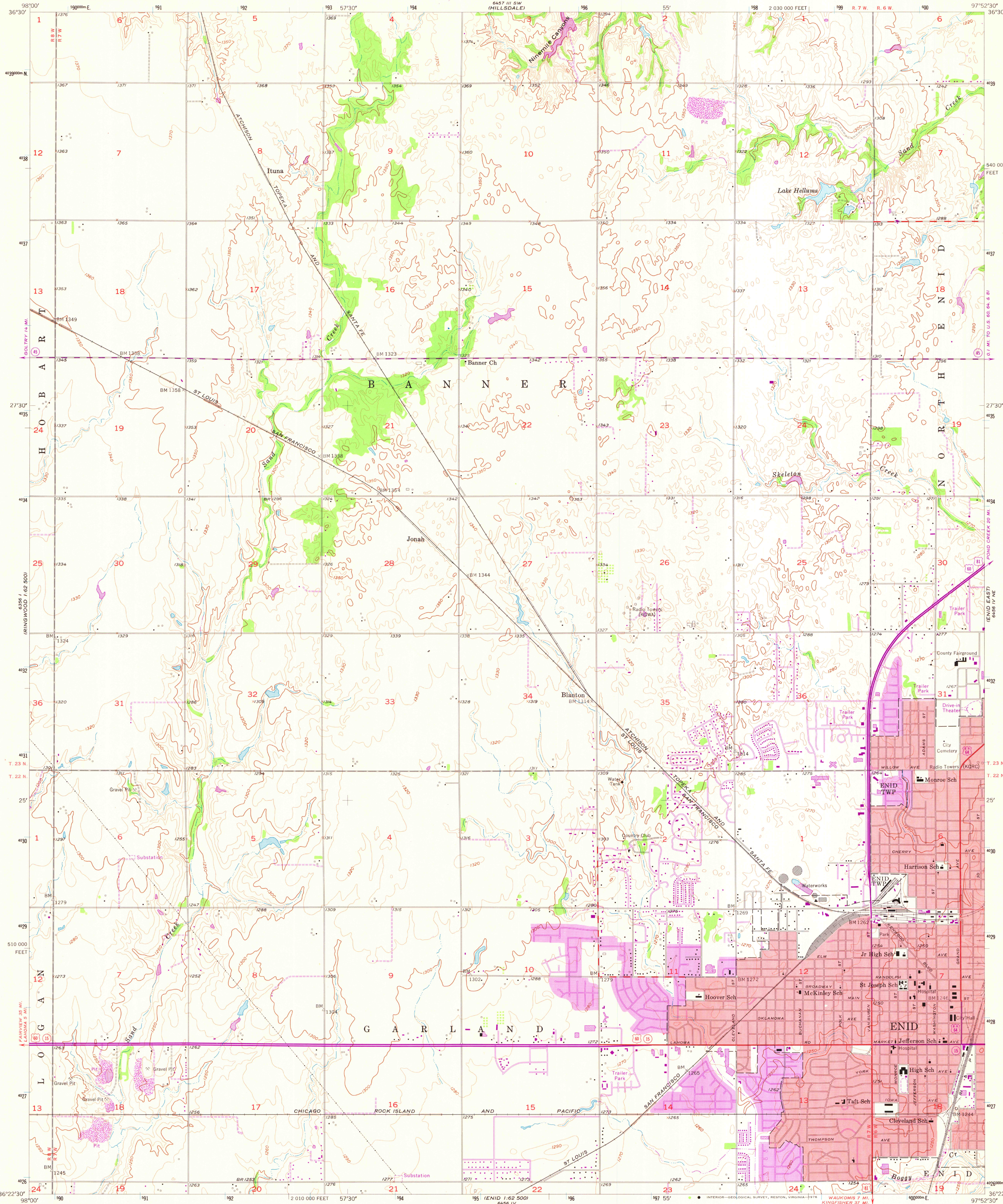


UNITED STATES  
DEPARTMENT OF THE INTERIOR  
GEOLOGICAL SURVEY

ENID WEST QUADRANGLE  
OKLAHOMA-GARFIELD CO.  
7.5 MINUTE SERIES (TOPOGRAPHIC)  
NW/4 ENID 15' QUADRANGLE



Mapped, edited, and published by the Geological Survey  
Control by USGS, USC&GS, and Oklahoma Geodetic Survey  
Topography from aerial photographs by Kelsh plotter  
Aerial photographs taken 1954. Field check 1955  
Polyconic projection. 1927 North American datum  
10,000-foot grid based on Oklahoma coordinate system, north zone  
1000-metre Universal Transverse Mercator grid ticks,  
Zone 14, shown in blue  
Red tint indicates area in which only  
landmark buildings are shown  
Revisions shown in purple compiled from aerial photographs  
taken 1975. This information not field checked  
Purple tint indicates extension of urban areas

SCALE 1:24 000  
CONTOUR INTERVAL 10 FEET  
NATIONAL GEODETIC VERTICAL DATUM OF 1929  
THIS MAP COMPLIES WITH NATIONAL MAP ACCURACY STANDARDS  
FOR SALE BY U.S. GEOLOGICAL SURVEY, DENVER, COLORADO 80225, OR RESTON, VIRGINIA 22092  
AND BY THE OKLAHOMA GEOLOGICAL SURVEY, NORMAN, OKLAHOMA 73069  
A FOLDER DESCRIBING TOPOGRAPHIC MAPS AND SYMBOLS IS AVAILABLE ON REQUEST

ROAD CLASSIFICATION  
Heavy-duty ——— Light-duty ———  
Medium-duty ——— Unimproved dirt ———  
U.S. Route ——— State Route ———  
MAP AND AIR PHOTO  
LIBRARY  
OCT 15 1976  
University of Wisconsin  
Madison  
ENID WEST, OKLA.  
NW/4 ENID 15' QUADRANGLE  
N3622.5-W9752.5/7.5  
1955  
PHOTOREVISED 1975  
AMS 6456 IV NW-SERIES V883