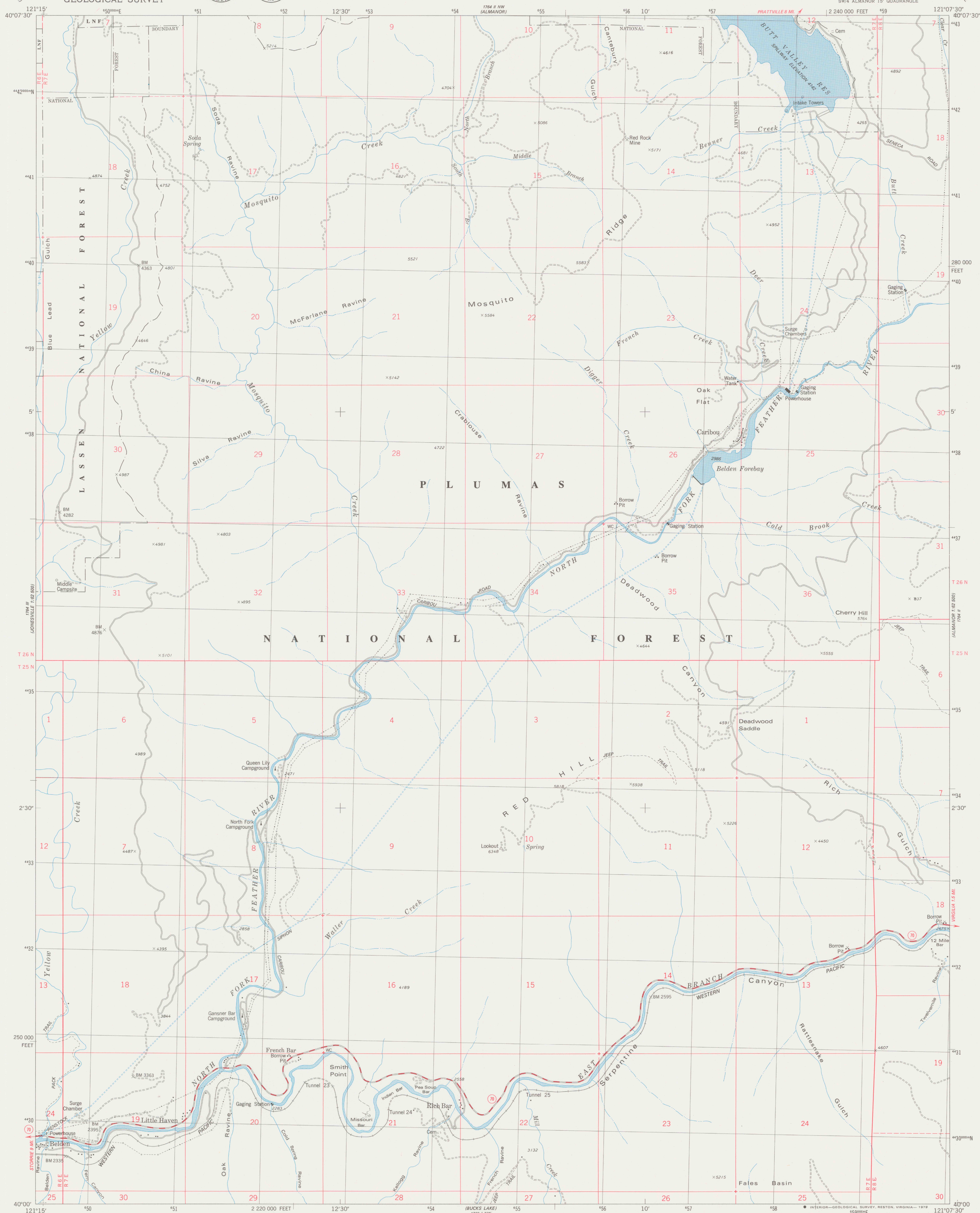


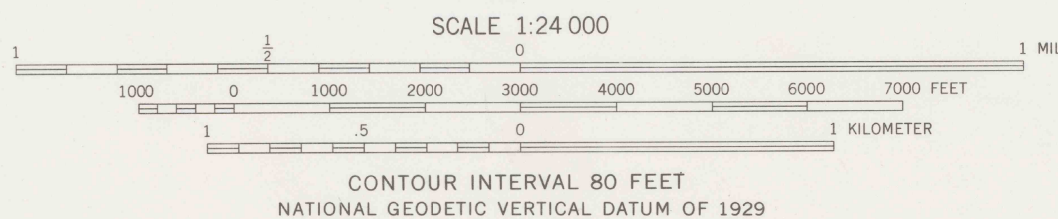
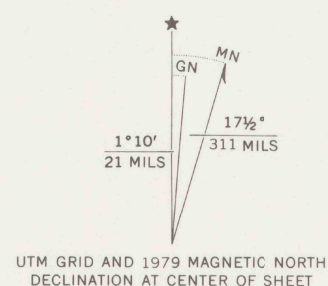
UNITED STATES
DEPARTMENT OF THE INTERIOR
GEOLOGICAL SURVEY



CARIBOU QUADRANGLE
CALIFORNIA-PLUMAS CO.
7.5 MINUTE SERIES (TOPOGRAPHIC)
SW/4 ALMANOR 15' QUADRANGLE



Mapped, edited, and published by the Geological Survey
Control by USGS and NOS/NOAA
Topography by photogrammetric methods from aerial
photographs taken 1973. Field checked 1974. Map edited 1979
Underwater contours by Pacific Gas and Electric Co.
Projection and 10,000-foot grid ticks: California coordinate
system, zone 1 (Lambert conformal conic)
1000-meter Universal Transverse Mercator grid, zone 10
1927 North American Datum
To place on the predicted North American Datum 1983
move the projection lines 16 meters north and
90 meters east as shown by dashed corner ticks
There may be private inholdings within the boundaries of
the National or State reservations shown on this map



THIS MAP COMPLIES WITH NATIONAL MAP ACCURACY STANDARDS
FOR SALE BY U.S. GEOLOGICAL SURVEY, DENVER, COLORADO 80225, OR RESTON, VIRGINIA 22092
A FOLDER DESCRIBING TOPOGRAPHIC MAPS AND SYMBOLS IS AVAILABLE ON REQUEST



ROAD CLASSIFICATION
Primary highway, hard surface
Secondary highway, hard surface
Interstate Route
U.S. Route
State Route
Light-duty road, hard or improved surface
Unimproved road
Borrow Pit

CARIBOU, CALIF.
SW/4 ALMANOR 15' QUADRANGLE
N4000-W12107.5/7.5

1979

DMA 1764 II SW-SERIES V895

DO NOT CIRCULATE

REFERENCE
R
3700s
Var
U5
7.5
ed. 1979 88