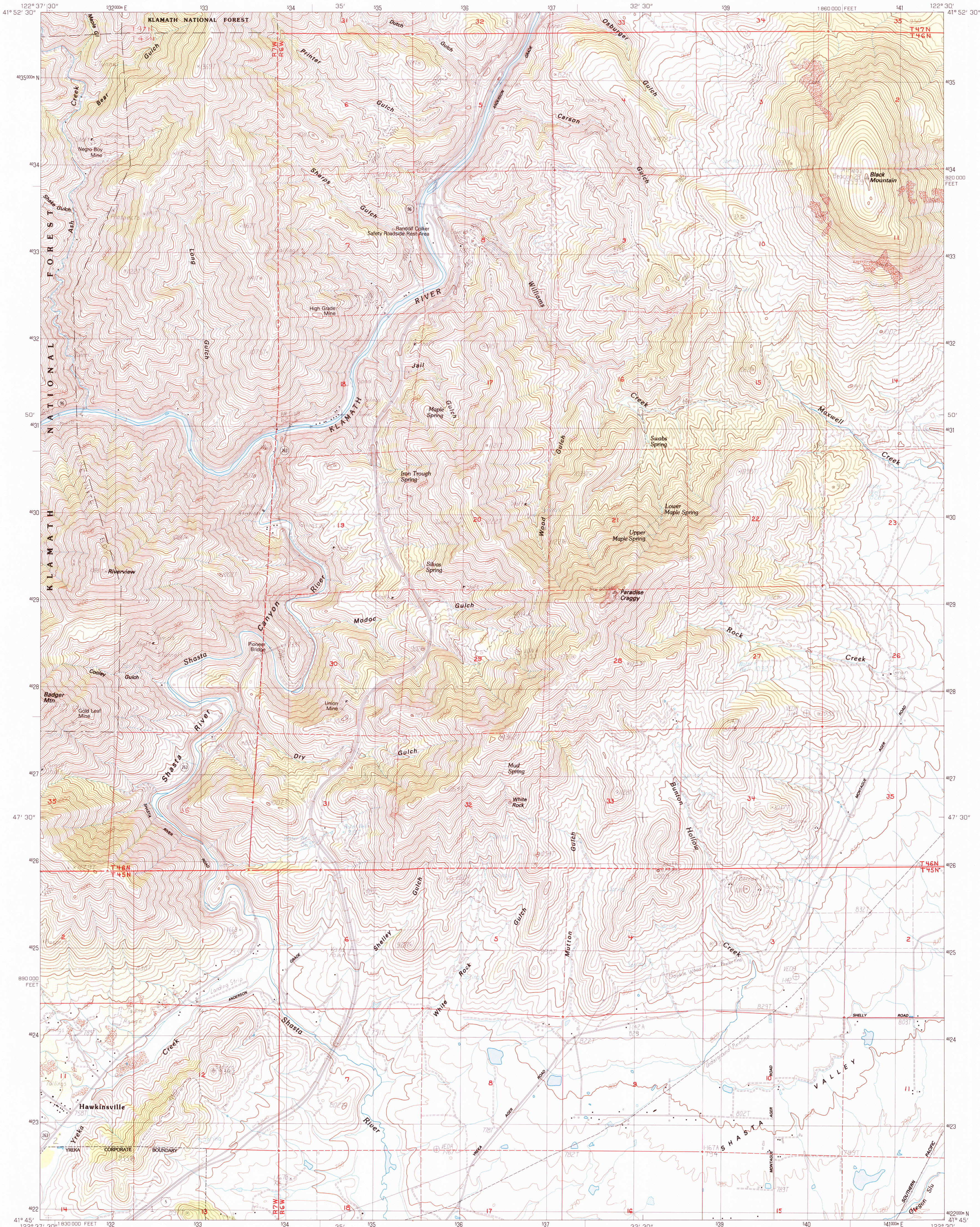


UNITED STATES
DEPARTMENT OF THE INTERIOR
GEOLOGICAL SURVEY

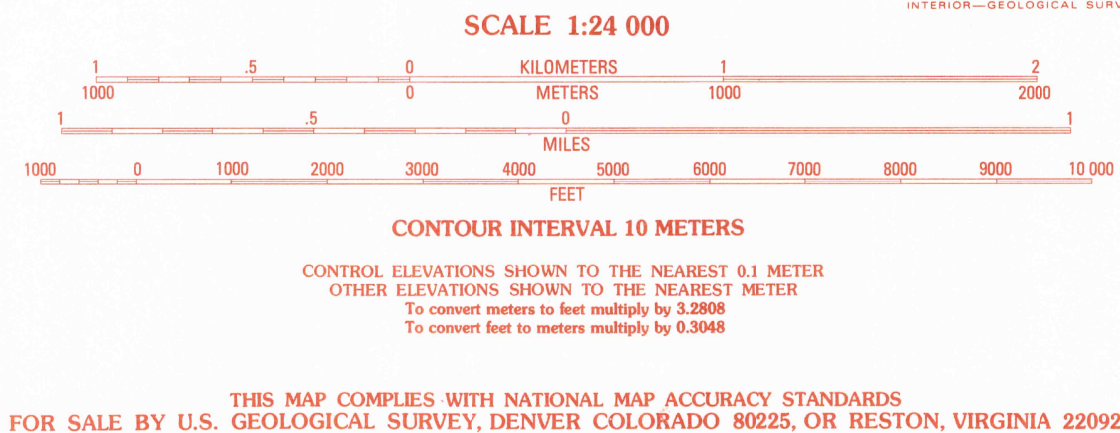
HAWKINSVILLE QUADRANGLE
CALIFORNIA—SISKIYOU CO.
7.5 MINUTE SERIES (TOPOGRAPHIC)



PRODUCED BY THE UNITED STATES GEOLOGICAL SURVEY
CONTROL BY USGS, NOS/NOAA
COMPILED FROM AERIAL PHOTOGRAPHS TAKEN 1976-80
FIELD CHECKED 1980. MAP EDITED 1983
PROJECTION LAMBERT CONFORMAL CONIC
GRID: 1000-METER UNIVERSAL TRANSVERSE MERCATOR ZONE 10
10,000-FOOT STATE GRID TICS CALIFORNIA ZONE 1
UTM GRID DECLINATION 0°18' EAST
1980 MAGNETIC NORTH DECLINATION 18° EAST
VERTICAL DATUM NATIONAL GEODETIC VERTICAL DATUM OF 1929
HORIZONTAL DATUM 1927 NORTH AMERICAN DATUM
To place on the predicted North American Datum of 1983,
move the projection lines as shown by dashed corner ticks
(19 meters north/94 meters east)
There may be private inholdings within the boundaries of any
Federal and State Reservations shown on this map
Certain land lines are omitted because of insufficient data

PROVISIONAL MAP
Produced from original
manuscript drawings. Infor-
mation shown as of date of
field check.

2



1	2	3	Cottonwood Peak
4	5	6	Hornbrook
7	8	9	Iron Gate Reservoir
10	11	12	Badger Mtn.
13	14	15	Bogus Mountain
16	17	18	Yreka
19	20	21	Montague
22	23	24	Little Shasta

ADJOINING 7.5' QUADRANGLE NAMES

Contours and Elevations in Meters
ROAD LEGEND
Improved Road
Unimproved Road
Trail
Interstate Route
U.S. Route
State Route

HAWKINSVILLE, CALIF.
PROVISIONAL EDITION 1983

41122-G5-TM-024