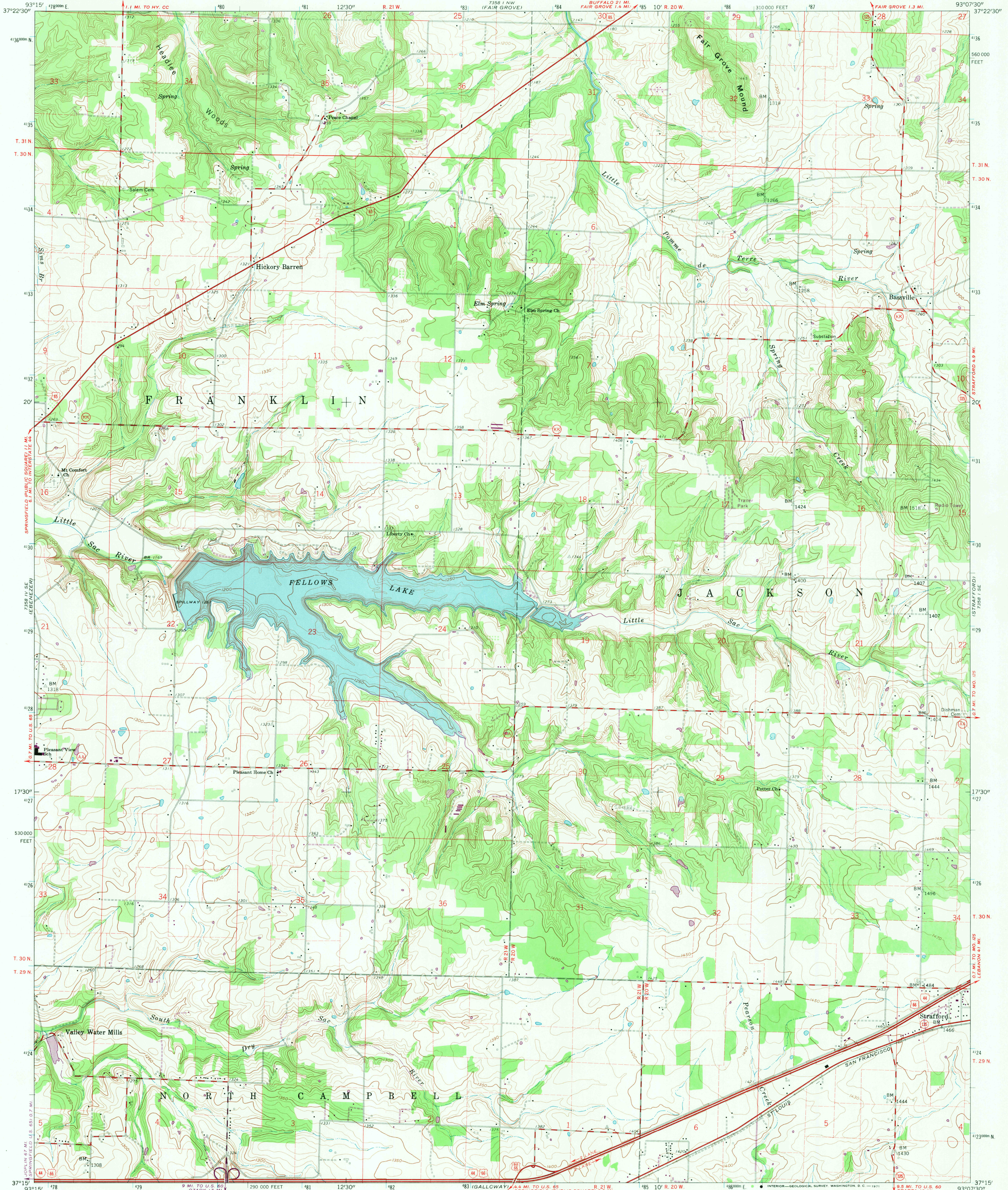


UNITED STATES  
DEPARTMENT OF THE INTERIOR  
GEOLOGICAL SURVEY

BASSVILLE QUADRANGLE  
MISSOURI—GREENE CO.  
7.5 MINUTE SERIES (TOPOGRAPHIC)  
SW 1/4 STRAFFORD 15' QUADRANGLE



Mapped, edited, and published by the Geological Survey with financial cooperation by State of Missouri, Geological Survey and Water Resources

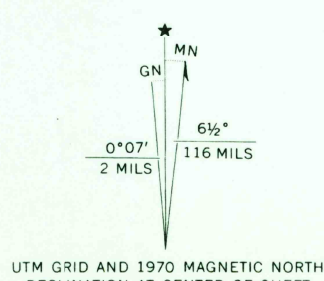
Control by USGS and USC&GS

Culture and drainage in part compiled from aerial photographs taken 1944. Topography by planetable surveys 1946. Revised 1961

Polyconic projection. 1927 North American datum 10,000-foot grid based on Missouri coordinate system, central zone 1000-meter Universal Transverse Mercator grid ticks, zone 15, shown in blue

Fine red dashed lines indicate selected fence and field lines where generally visible on aerial photographs. This information is unchecked

Revisions shown in purple compiled from aerial photographs taken 1970. This information not field checked



SCALE 1:24,000  
CONTOUR INTERVAL 10 FEET  
DATUM IS MEAN SEA LEVEL

USGS  
Historical File  
Topographic Division



U.S.G.S.  
FILE COPY  
TOPOGRAPHIC DIVISION

ROAD CLASSIFICATION  
Heavy-duty ——— Light-duty ———  
Medium-duty ——— Unimproved dirt ———  
Interstate Route ——— U.S. Route ——— State Route ———

BASSVILLE, MO.  
SW 1/4 STRAFFORD 15' QUADRANGLE  
N 3715—W 9307.5/7.5

1961  
PHOTOREVISED 1970  
AMS 7358 1 SW—SERIES Y879

THIS MAP COMPLIES WITH NATIONAL MAP ACCURACY STANDARDS  
FOR SALE BY U.S. GEOLOGICAL SURVEY, DENVER, COLORADO 80225, OR WASHINGTON, D.C. 20242  
AND BY THE MISSOURI GEOLOGICAL SURVEY, ROLLA, MISSOURI 65401  
A FOLDER DESCRIBING TOPOGRAPHIC MAPS AND SYMBOLS IS AVAILABLE ON REQUEST

1970  
JUN 1 1971