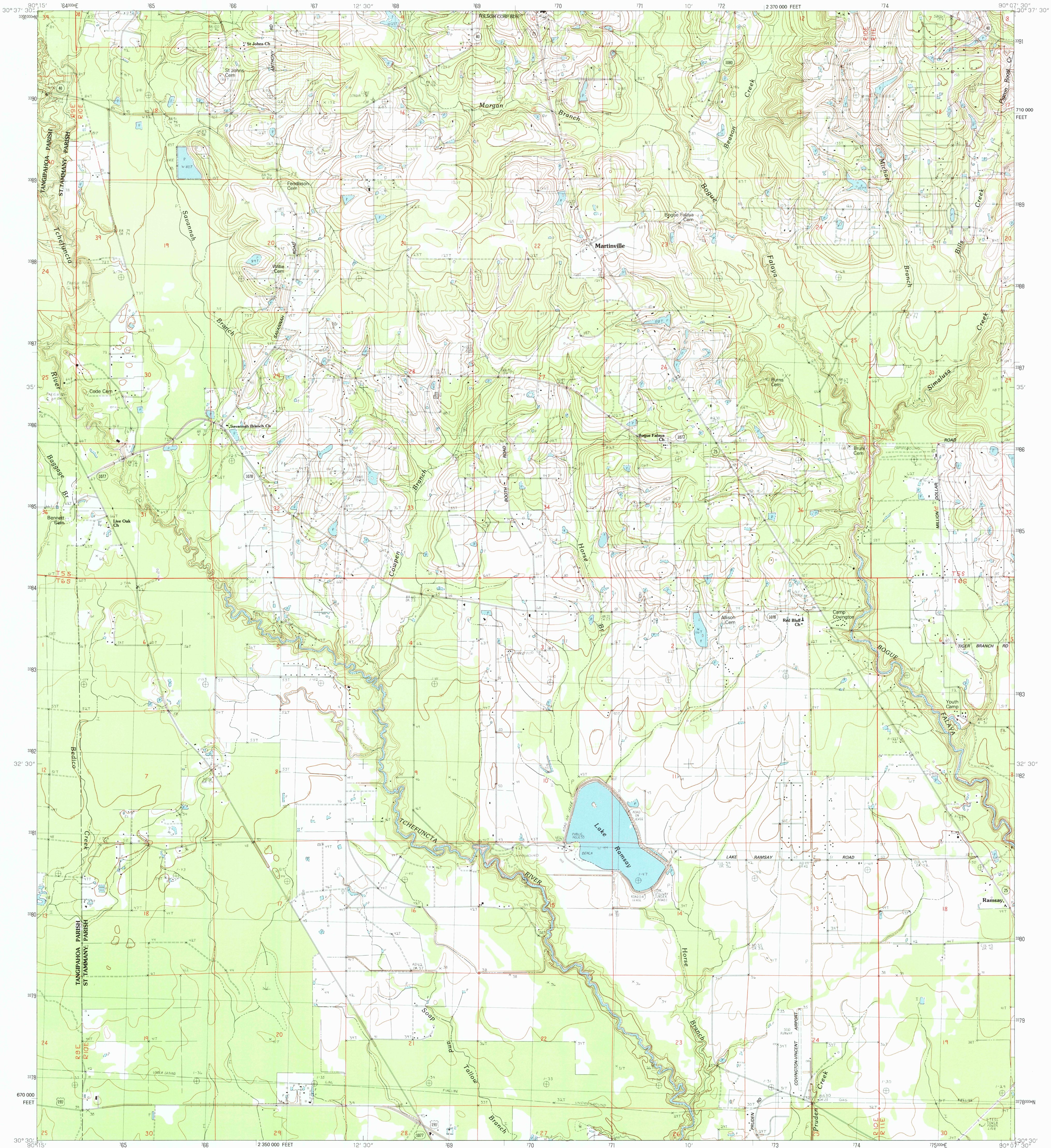


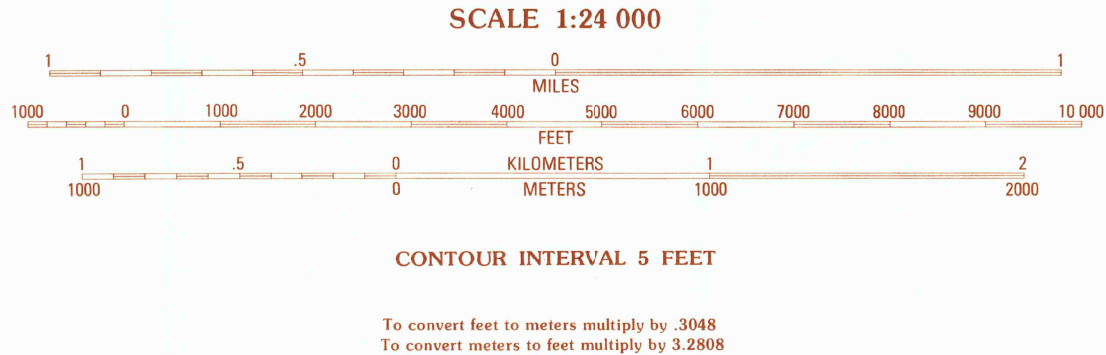
UNITED STATES
DEPARTMENT OF THE INTERIOR
GEOLOGICAL SURVEY

MARTINVILLE QUADRANGLE
LOUISIANA
7.5 MINUTE SERIES (TOPOGRAPHIC)



PRODUCED BY THE UNITED STATES GEOLOGICAL SURVEY
CONTROL BY USGS AND NOS/NOAA
COMPILED FROM AERIAL PHOTOGRAPHS TAKEN 1978
FIELD CHECKED 1980. MAP EDITED
PROJECTION LAMBERT CONFORMAL CONIC
GRID: 1000-METER UNIVERSAL TRANSVERSE MERCATOR ZONE 15
10000-FOOT STATE GRID TICKS LOUISIANA, SOUTH ZONE
UTM GRID DECLINATION 17°26' EAST
1983 MAGNETIC NORTH DECLINATION 3°36' EAST
VERTICAL DATUM NATIONAL GEODETIC VERTICAL DATUM OF 1989
HORIZONTAL DATUM 1927 NORTH AMERICAN DATUM
To place on the predicted North American Datum of 1983,
move the projection lines as shown by dashed corner ticks
(17 meters south and 8 meters east)
There may be private inholdings within the boundaries of any
Federal and State reservations shown on this map

PROVISIONAL MAP
Produced from original
manuscript drawings. Infor-
mation shown as of date of
field check.



THIS MAP COMPLIES WITH NATIONAL MAP ACCURACY STANDARDS
FOR SALE BY U.S. GEOLOGICAL SURVEY, DENVER, COLORADO 80225, OR RESTON, VIRGINIA 22092
AND LOUISIANA DEPARTMENT OF PUBLIC WORKS, BATON ROUGE, LOUISIANA 70804



1	2	3	1 Husser
			2 Follom
			3 Enon
4		5	4 Robert
			5 Waltheim
			6 Ponchatoula NE
6	7	8	7 Madisonville
			8 Covington

ADJOINING 7.5 QUADRANGLE NAMES

ROAD LEGEND
Improved Road
Unimproved Road
Trail
Interstate Route U.S. Route State Route

MARTINVILLE, LOUISIANA
SW 1/4 FOLSOM 15' QUADRANGLE
PROVISIONAL EDITION 1983

30090-E2-TF-024

REPRODUCED COPY

JUL 29 1988

U.S. GEOLOGICAL SURVEY