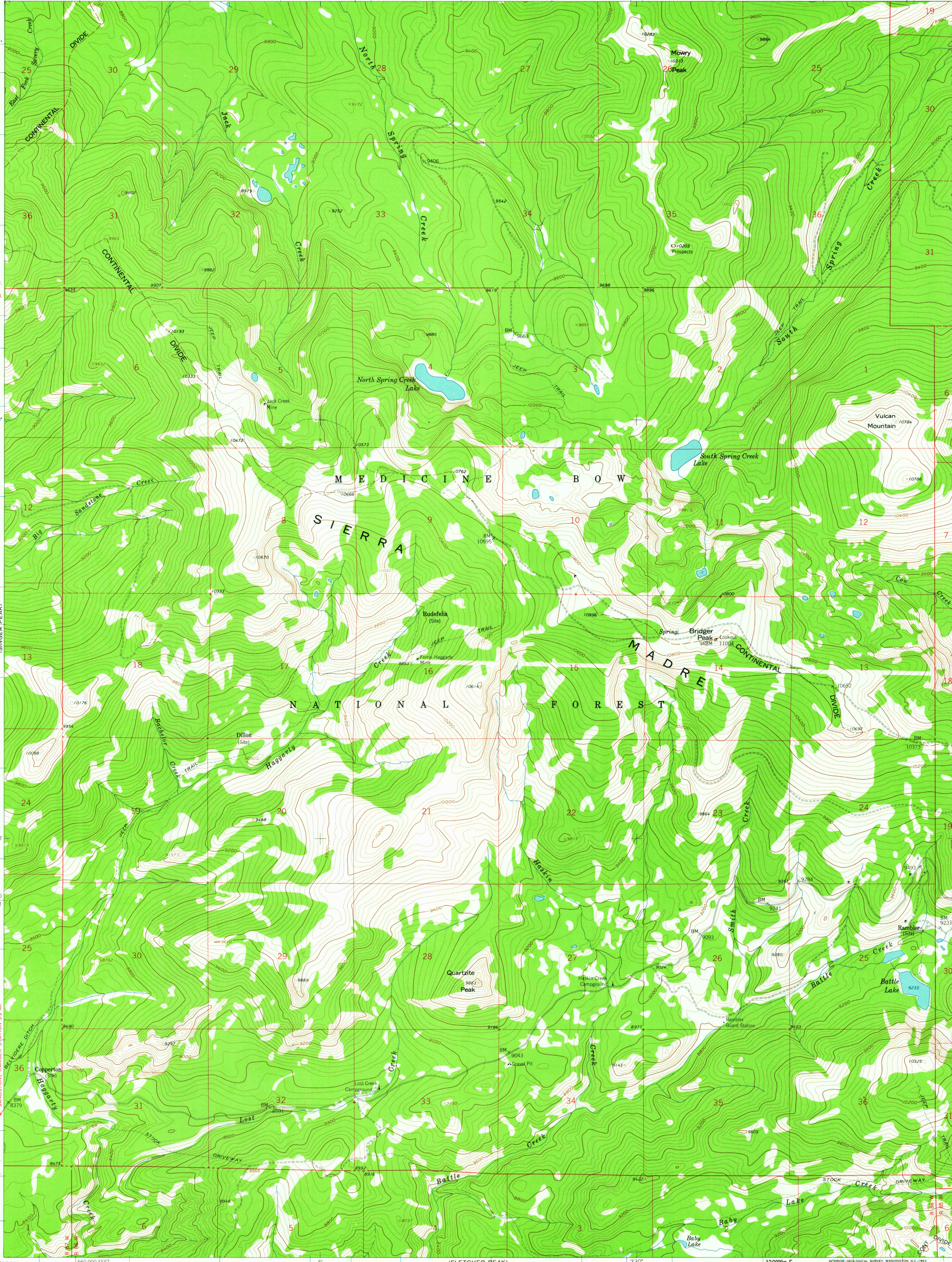


UNITED STATES  
DEPARTMENT OF THE INTERIOR  
GEOLOGICAL SURVEY

BRIDGER PEAK QUADRANGLE  
WYOMING-CARBON CO.  
7.5 MINUTE SERIES (TOPOGRAPHIC)

107°07'30" R. 87 W. R. 86 W. 323000m. E.

R. 86 W. 590 000 FEET R. 85 W. 107°00' 41'15"

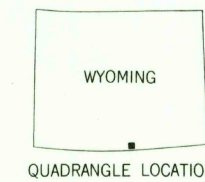
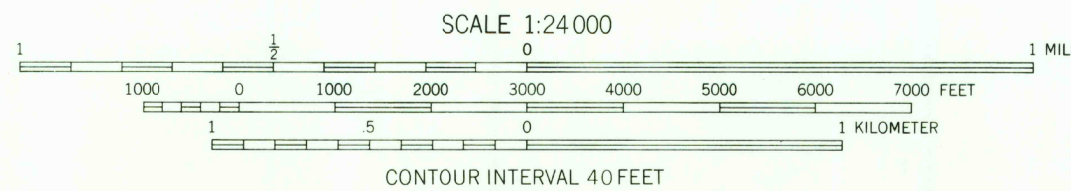
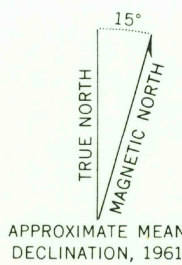


Mapped, edited, and published by the Geological Survey  
as part of the Department of the Interior program  
for the development of the Missouri River Basin

Control by USGS and USC&GS

Topography by photogrammetric methods from aerial  
photographs taken 1951. Field checked 1961

Polyconic projection. 1927 North American datum  
10,000-foot grid based on Wyoming coordinate system, east central zone  
1000-meter Universal Transverse Mercator grid ticks,  
zone 13, shown in blue



ROAD CLASSIFICATION  
Light-duty ————— Unimproved dirt —————

BRIDGER PEAK, WYO.

N4107.5-W10700/7.5

1961

RETURN TO:  
USGS AND HISTORICAL MAP ARCHIVES

JUN 20 1963

2205