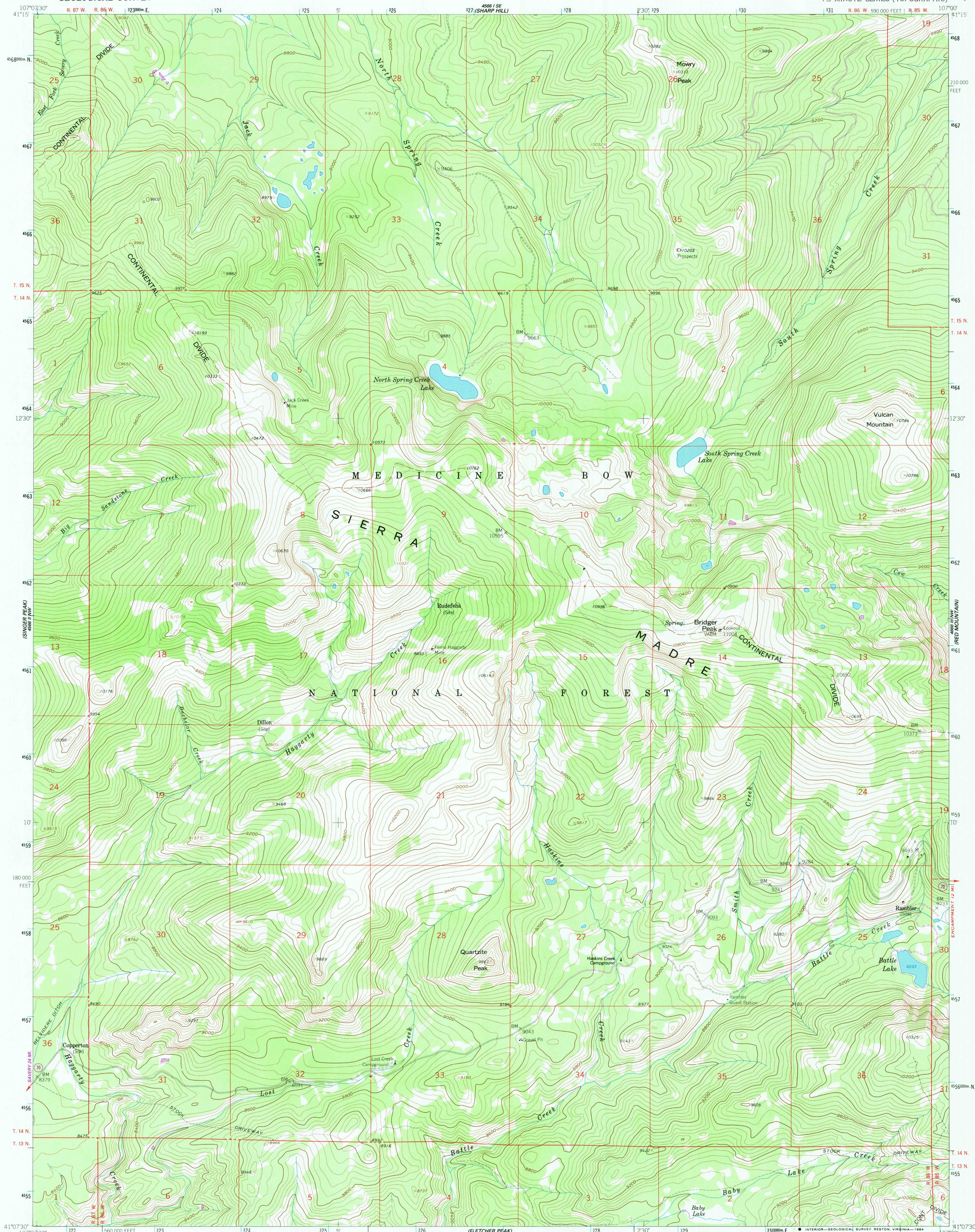


UNITED STATES
DEPARTMENT OF THE INTERIOR
GEOLOGICAL SURVEY

BRIDGER PEAK QUADRANGLE
WYOMING-CARBON CO.
7.5 MINUTE SERIES (TOPOGRAPHIC)



Mapped, edited, and published by the Geological Survey
as part of the Department of the Interior program
for the development of the Missouri River Basin

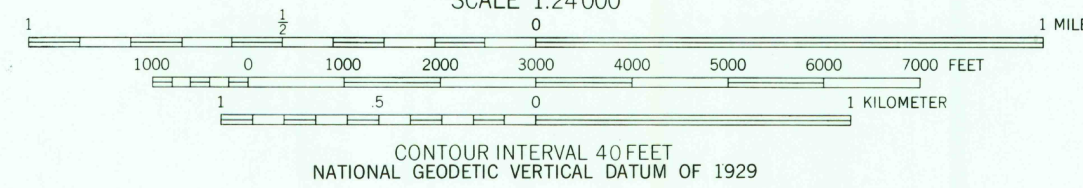
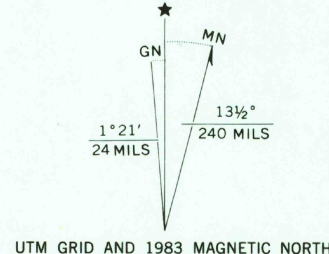
Control by USGS and NOS/NOAA

Topography by photogrammetric methods from aerial
photographs taken 1951. Field checked 1961

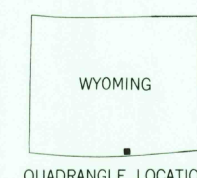
Polyconic projection 1927 North American Datum
10,000-foot grid based on Wyoming coordinate system, east central zone
1000-meter Universal Transverse Mercator grid ticks,
zone 13, shown in blue

There may be private inholdings within the boundaries of
National or State reservations shown on this map

To place on the predicted North American Datum 1983
move the projection lines 7 meters north and
52 meters east as shown by dashed corner ticks



FOR SALE BY U. S. GEOLOGICAL SURVEY, DENVER, COLORADO 80225, OR RESTON, VIRGINIA 22092
A FOLDER DESCRIBING TOPOGRAPHIC MAPS AND SYMBOLS IS AVAILABLE ON REQUEST



ROAD CLASSIFICATION
Light-duty Unimproved dirt =====
State Route

BRIDGER PEAK, WYO.
41107-B1-TF-024

1961
PHOTOREVISED 1983
DMA 4566 II NE-SERIES Y874

Revisions shown in purple and woodland compiled from
aerial photographs taken 1981 and other source data
Partial field check by U.S. Forest Service. Map edited 1983

RETURN TO:
USGS AND HISTORICAL MAP ARCHIVES

JUL 11 1984