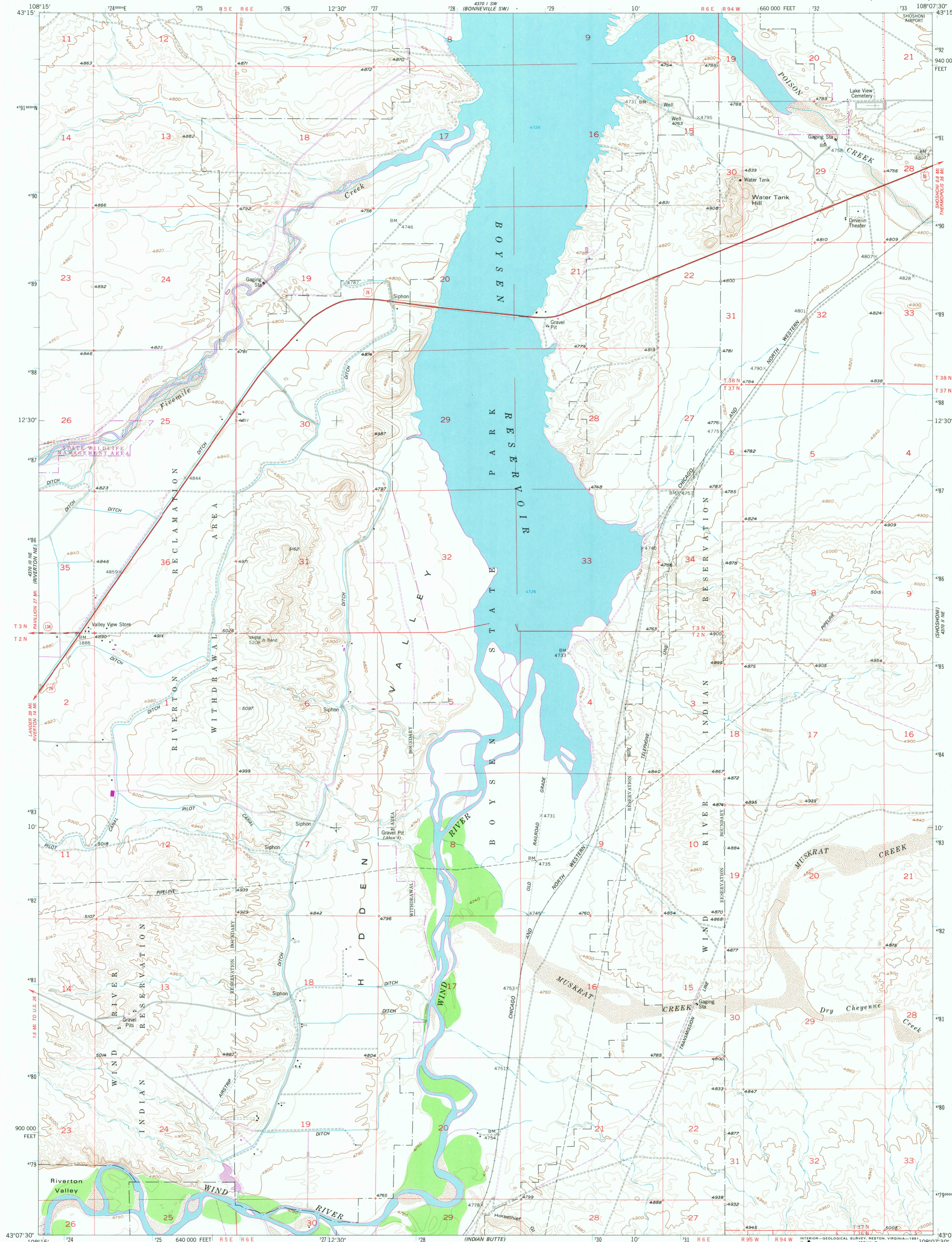


UNITED STATES  
DEPARTMENT OF THE INTERIOR  
GEOLOGICAL SURVEY

HIDDEN VALLEY QUADRANGLE  
WYOMING-FREMONT CO.  
7.5 MINUTE SERIES (TOPOGRAPHIC)



Mapped, edited, and published by the Geological Survey  
as part of the Department of the Interior program  
for the development of the Missouri River Basin  
Control by USGS and NOS/NOAA

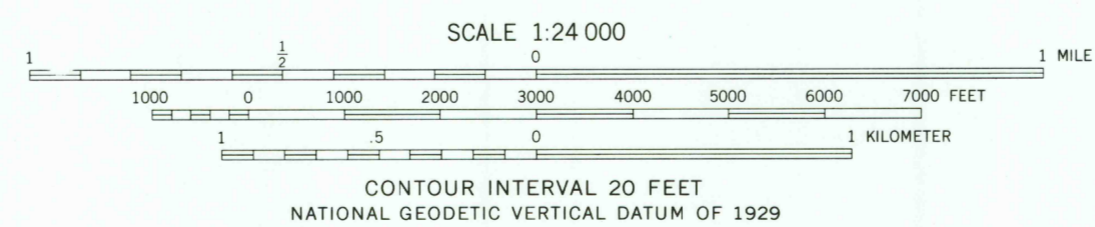
Topography from aerial photographs by multiplex methods  
Aerial photographs taken 1949. Field checked 1951. Revised 1957

Polyconic projection. 1927 North American datum  
10,000-foot grid based on the Wind River Base Line  
west central zone  
1000-meter Universal Transverse Mercator grid ticks,  
zone 12, shown in blue

R. 5 E. and R. 6 E. based on the Wind River Meridian  
T. 2 N. and T. 3 N. based on the Wind River Base Line  
R. 94 W. and R. 95 W. based on the Sixth Principal Meridian  
T. 36 N., T. 37 N. and T. 38 N. based on the Base Line  
(40th Parallel)

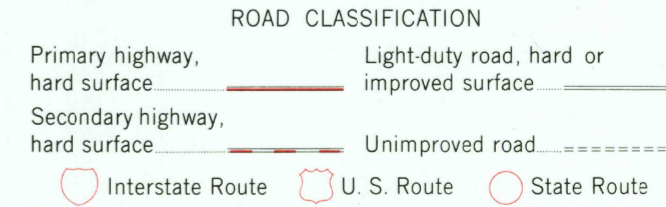
There may be private inholdings within the boundaries of  
National or State reservations shown on this map

To place on the predicted North American Datum 1983  
move the projection lines 9 meters north and  
54 meters east as shown by dashed corner ticks



THIS MAP COMPLIES WITH NATIONAL MAP ACCURACY STANDARDS  
FOR SALE BY U. S. GEOLOGICAL SURVEY, DENVER, COLORADO 80225, OR RESTON, VIRGINIA 22092  
A FOLDER DESCRIBING TOPOGRAPHIC MAPS AND SYMBOLS IS AVAILABLE ON REQUEST

Revisions shown in purple and woodland compiled from  
aerial photographs taken 1975 and other source data  
This information not field checked. Map edited 1980



USGS  
HISTORICAL FILE  
NATIONAL MAPPING DIVISION  
HIDDEN VALLEY, WYO.  
N4307.5-W10807.5/7.5

1957  
PHOTOREVISED 1980  
DMA 4370 II NW-SERIES V874

RETURN TO:  
USGS AND HISTORICAL MAP ARCHIVES

SEP 21 1981  
2000