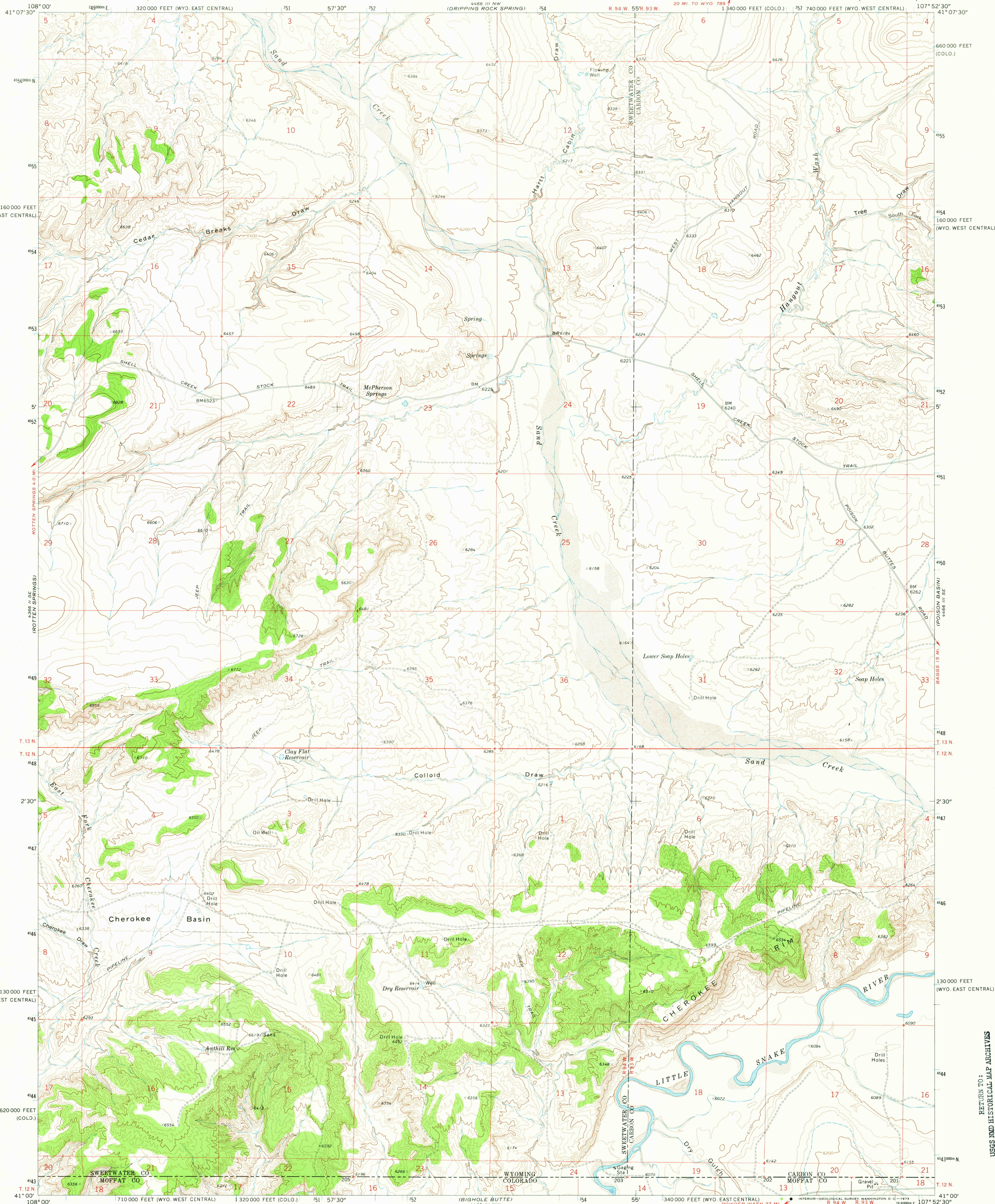


UNITED STATES  
DEPARTMENT OF THE INTERIOR  
GEOLOGICAL SURVEY

MC PHERSON SPRINGS QUADRANGLE  
WYOMING-COLORADO  
7.5 MINUTE SERIES (TOPOGRAPHIC)

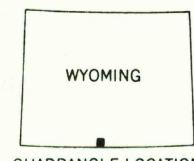
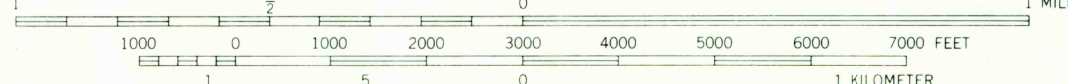
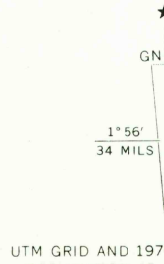


Mapped, edited, and published by the Geological Survey

Control by USGS and USC&GS

Topography by photogrammetric methods from aerial  
photographs taken 1968. Field checked 1970

Polyconic projection. 1927 North American datum  
10,000-foot grids based on Wyoming coordinate system,  
east central and west central zones and on Colorado coord nate  
system, north zone  
1000-meter Universal Transverse Mercator grid ticks,  
zone 13, shown in blue  
Fine red dashed lines indicate selected fence lines  
T. 12 N., sixth Principal Meridian, is duplicated  
in Colorado and Wyoming



ROAD CLASSIFICATION  
Primary highway, hard surface ——— Light-duty road, hard or improved surface  
Secondary highway, hard surface ——— Unimproved road  
Interstate Route U. S. Route State Route

MC PHERSON SPRINGS, WYO.-COLO.  
N4100-W10752.5/7.5

1970  
AMS 4466 III SW-SERIES V874

THIS MAP COMPLIES WITH NATIONAL MAP ACCURACY STANDARDS  
FOR SALE BY U. S. GEOLOGICAL SURVEY, DENVER, COLORADO 80225, OR WASHINGTON, D. C. 20242  
A FOLDER DESCRIBING TOPOGRAPHIC MAPS AND SYMBOLS IS AVAILABLE ON REQUEST

RETURN TO:  
USGS AND HISTORICAL MAP ARCHIVES

JUN 8 1973