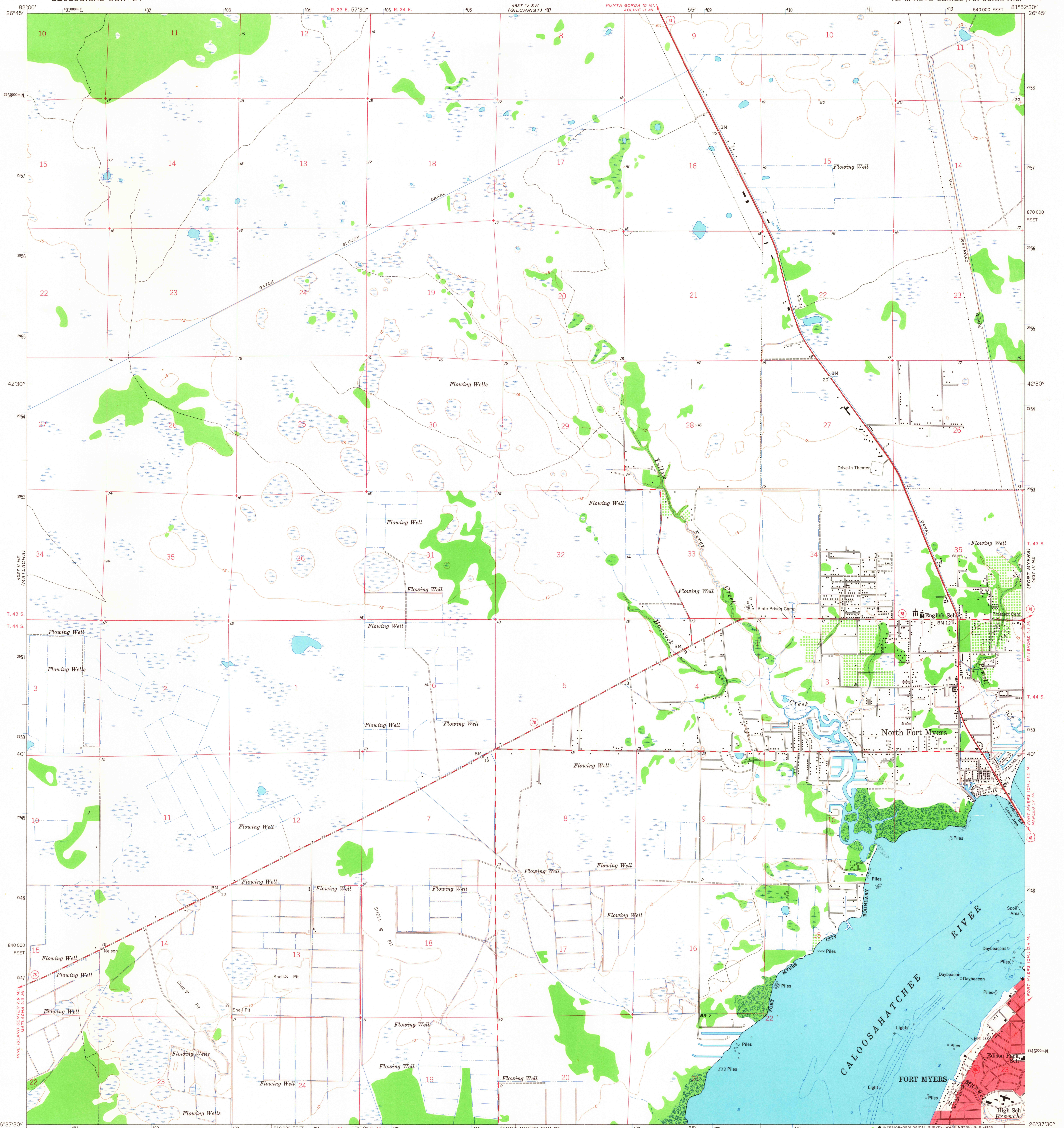


UNITED STATES
DEPARTMENT OF THE INTERIOR
GEOLOGICAL SURVEY

FORT MYERS NW QUADRANGLE
FLORIDA—LEE CO.
7.5 MINUTE SERIES (TOPOGRAPHIC)

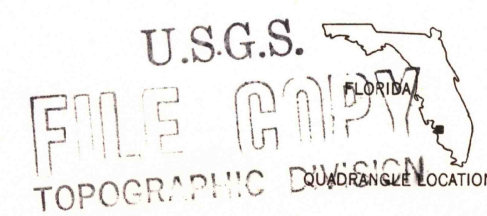
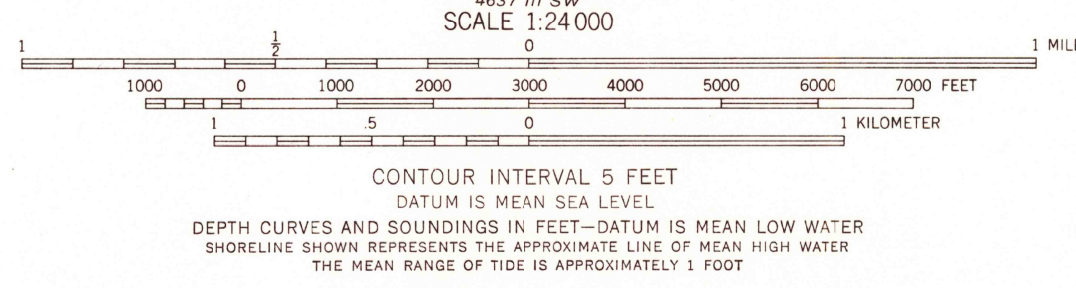
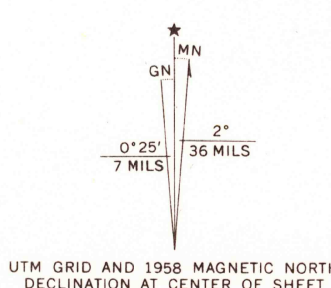


Maped, edited, and published by the Geological Survey
Control by USGS and USC&GS

Culture and drainage in part compiled from aerial photographs
taken 1951 and 1952. Topography by planetable surveys 1958
Hydrography compiled from USC&GS chart 473 (1956)

Polyconic projection, 1927 North American datum
10,000-foot grid based on Florida coordinate system, west zone
1000-meter Universal Transverse Mercator grid ticks,
zone 17, shown in blue

Red tint indicates area in which only
landmark buildings are shown



ROAD CLASSIFICATION
Heavy-duty ——— Light-duty ———
Medium-duty ——— Unimproved dirt ———
U.S. Route ——— State Route ———

FORT MYERS NW, FLA.
N 2637.5—W 8152.5/7.5

1958

AMS 4637 III NW—SERIES V847

APR 10 1969