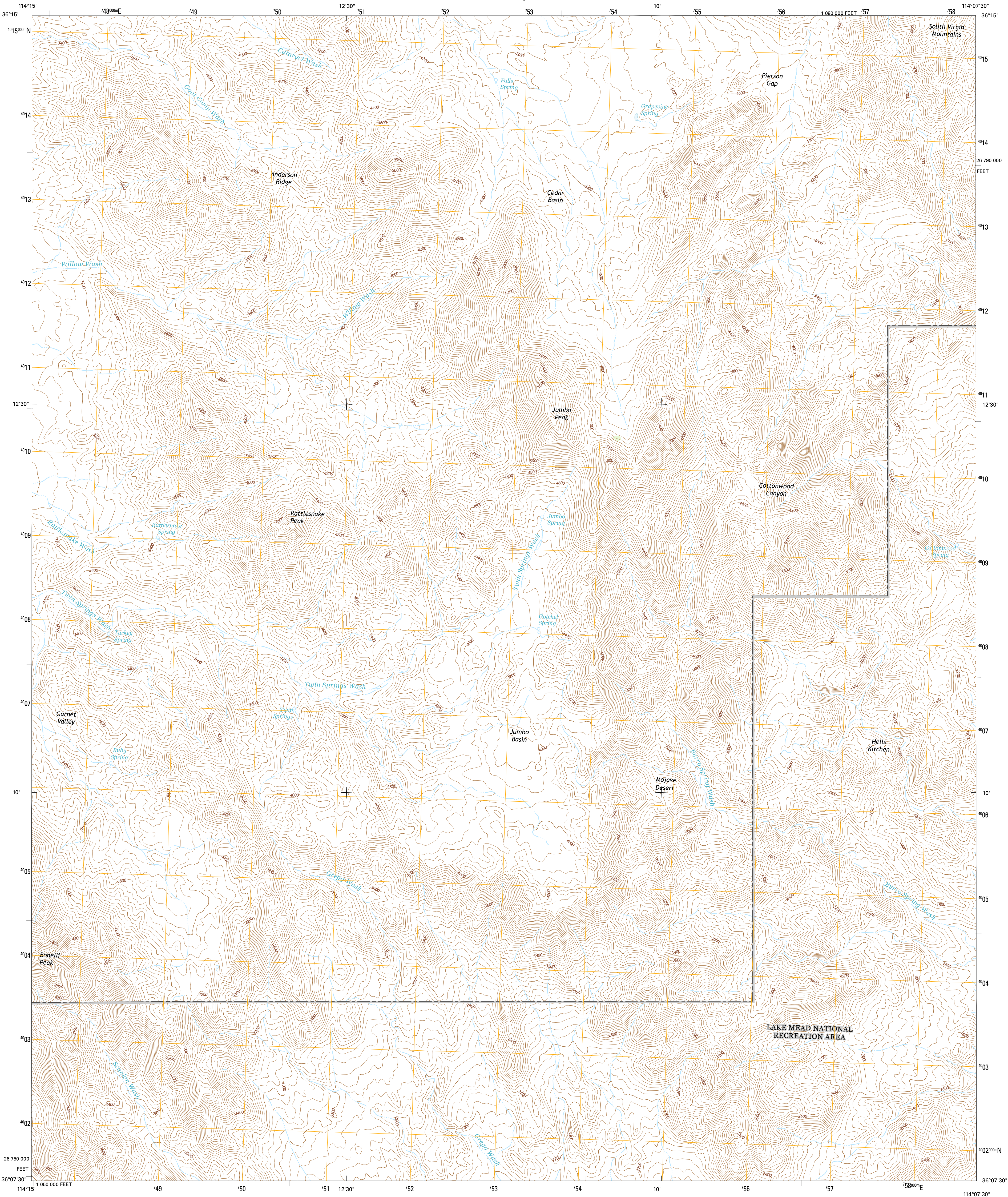




U.S. DEPARTMENT OF THE INTERIOR
U.S. GEOLOGICAL SURVEY



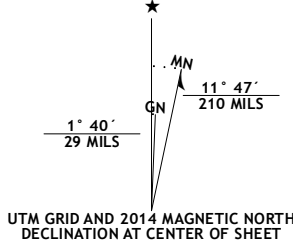
JUMBO PEAK QUADRANGLE
NEVADA-CLARK CO.
7.5-MINUTE SERIES



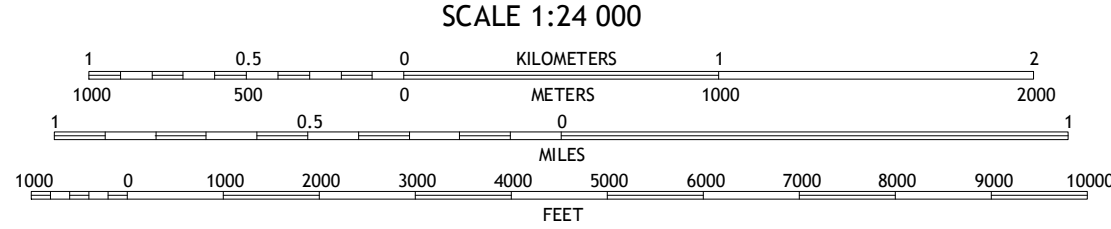
Produced by the United States Geological Survey
North American Datum of 1983 (NAD83)
World Geodetic System of 1984 (WGS84). Projection and
1 000-meter grid: Universal Transverse Mercator, Zone 11S
10 000-foot ticks: Nevada Coordinate System of 1983 (east zone)

This map is not a legal document. Boundaries may be
generalized for this map scale. Private lands within government
reservations may not be shown. Obtain permission before
entering private lands.

Imagery.....NAIP, July 2013
Roads.....HERE, ©2013
Names.....GNIS, 2013
Hydrography.....National Hydrography Dataset, 2013
Contours.....National Elevation Dataset, 2001
Boundaries.....Multiple sources; see metadata file 1972-2014
Public Land Survey System.....BLM, 2011



U.S. National Grid
100,000-m Square ID
QA
Grid Zone Designation
11S



CONTOUR INTERVAL 40 FEET
NORTH AMERICAN VERTICAL DATUM OF 1988
This map was produced to conform with the
National Geospatial Program US Topo Product Standard, 2011.
A metadata file associated with this product is draft version 0.6.18



ROAD CLASSIFICATION		
Expressway	Local Connector	
Secondary Hwy	Local Road	
Ramp	4WD	
Interstate Route	US Route	State Route

1	2	3
4	5	
6	7	8

ADJOINING QUADRANGLES

1 Lime Wash
2 Gold Butte
3 Azure Ridge
4 Garrett Butte
5 Iceberg Canyon
6 The Temple
7 Hiler Mountains
8 Meadow North

JUMBO PEAK, NV
2014

