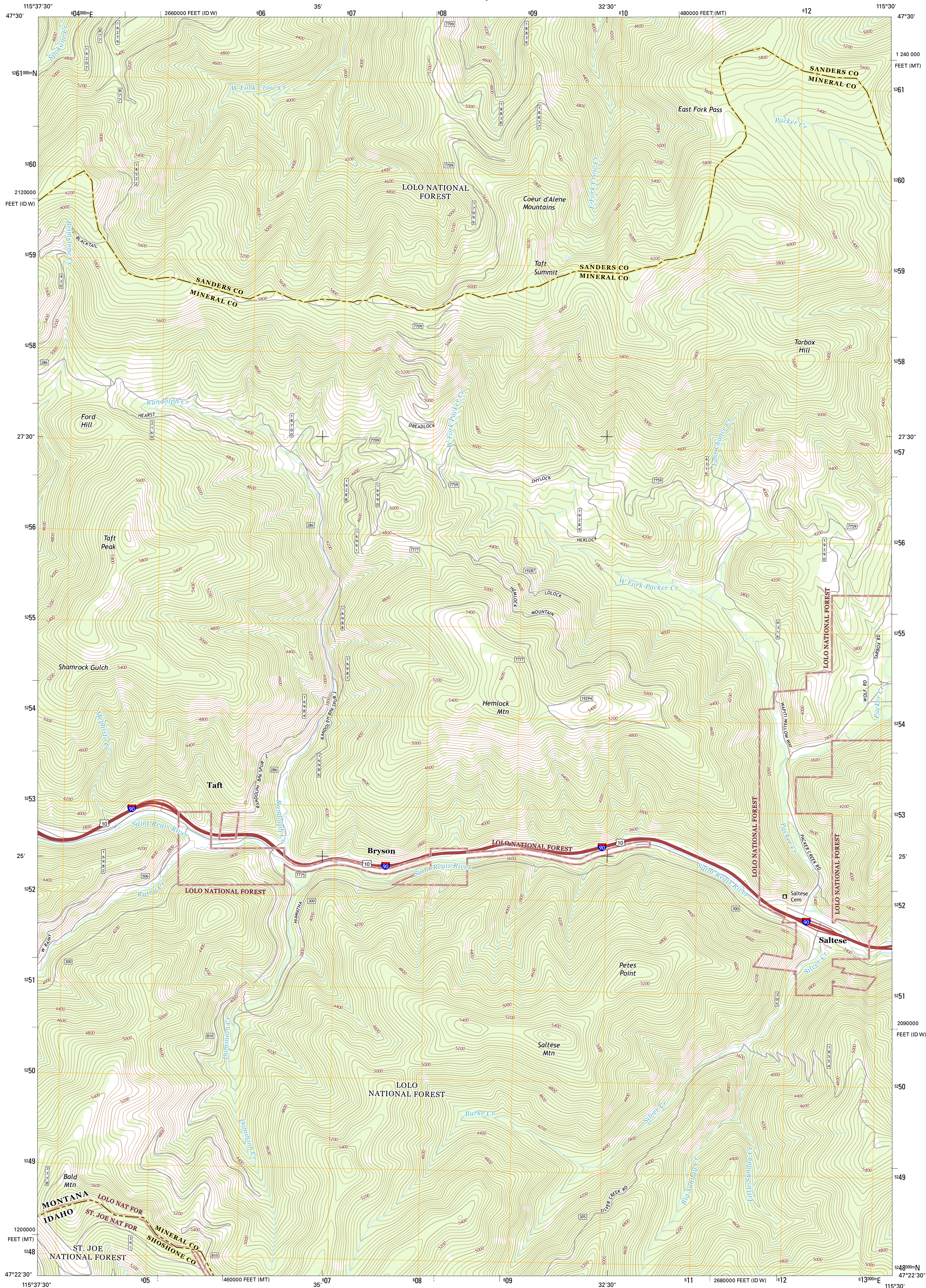




U.S. DEPARTMENT OF THE INTERIOR  
U.S. GEOLOGICAL SURVEY



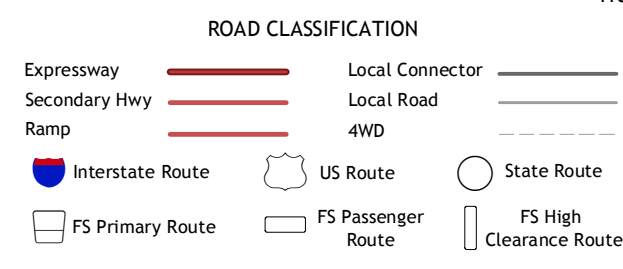
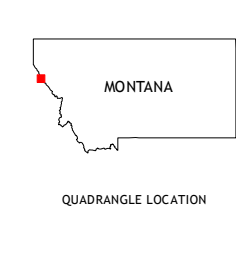
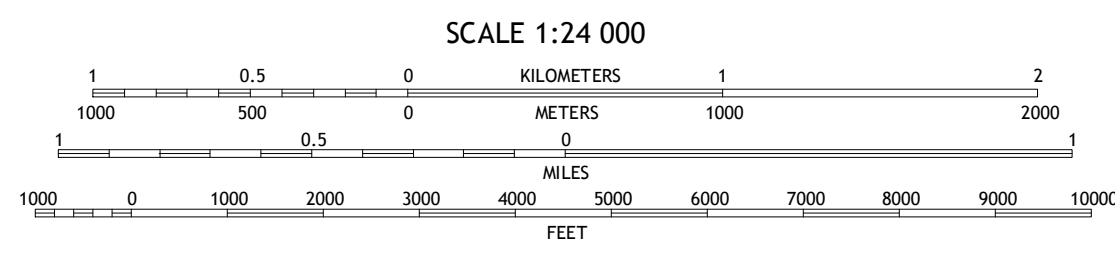
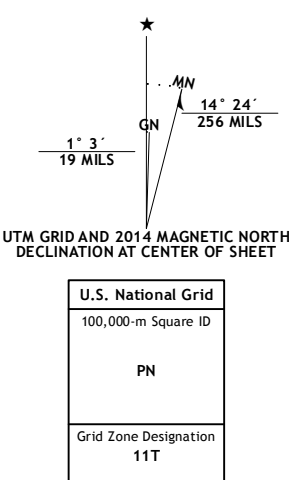
SALTESE QUADRANGLE  
MONTANA-IDAHO  
7.5-MINUTE SERIES



Produced by the United States Geological Survey  
North American Datum of 1983 (NAD83)  
World Geodetic System of 1984 (WGS84). Projection and  
1 000-meter grid: Universal Transverse Mercator, Zone 11T  
10 000-foot ticks: Montana Coordinate System of 1983, Idaho  
Coordinate System of 1983 (west zone)

This map is not a legal document. Boundaries may be  
generalized for this map scale. Private lands within government  
reservations may not be shown. Obtain permission before  
entering private lands.

Imagery.....NAIP, August 2011  
Roads.....HERE, ©2013  
Roads within US Forest Service Lands.....FSTopo Data  
with limited Forest Service updates, 2013  
Names.....GNIS, 2013  
Hydrography.....National Hydrography Dataset, 2011  
Contours.....National Elevation Dataset, 2002  
Boundaries.....Multiple sources; see metadata file 1972 - 2013  
Public Land Survey System.....BLM, 2011



1	2	3
4	5	6
7	8	9

1 Thompson Pass  
2 Driveway Peak  
3 Table Top Mountain  
4 Lookout Pass  
5 Haugen  
6 Shefoot Mountain  
7 Adair  
8 McGee Peak

Check with local Forest Service unit  
for current travel conditions and restrictions.

SALTESE, MT-ID  
2014

