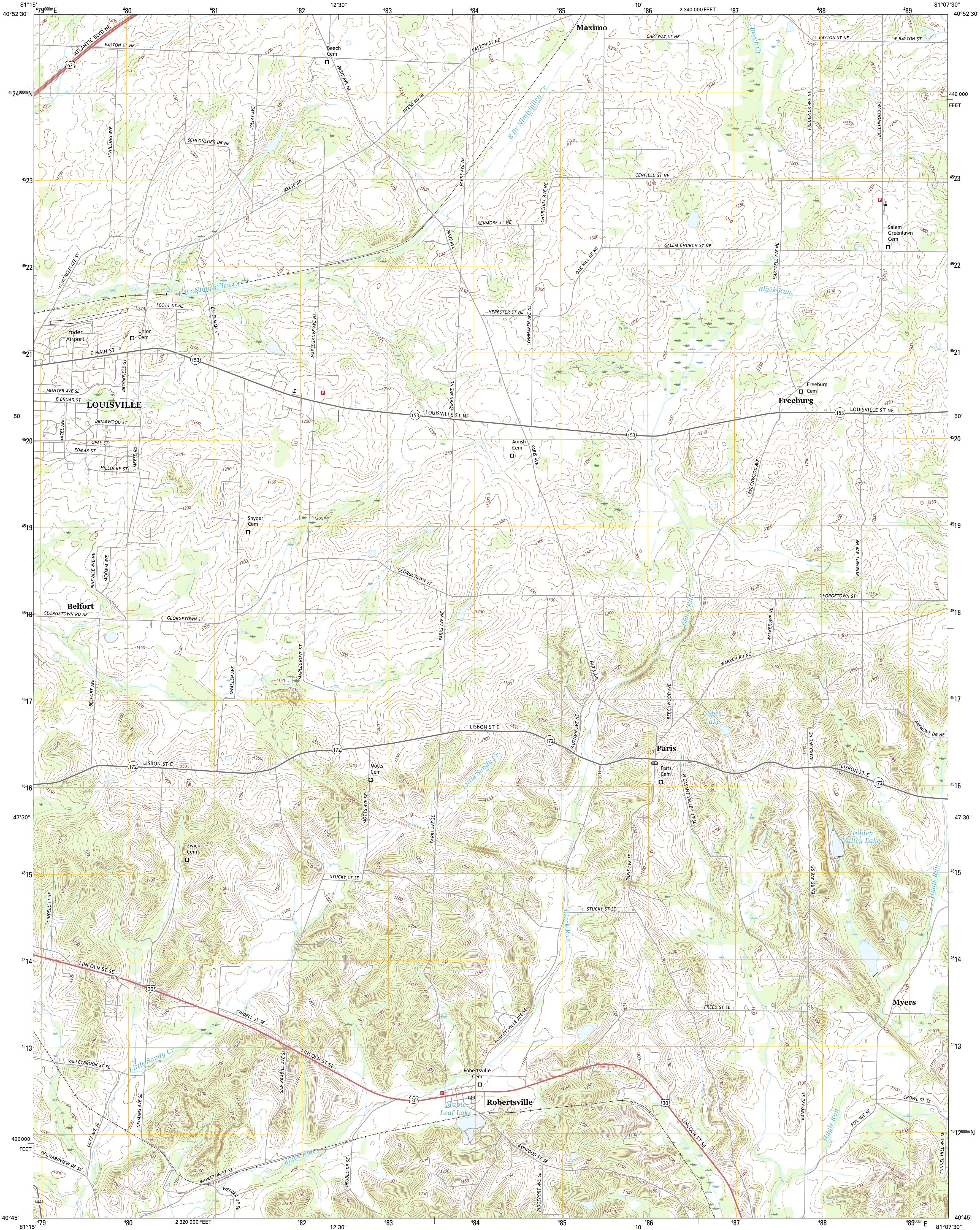




U.S. DEPARTMENT OF THE INTERIOR
U.S. GEOLOGICAL SURVEY



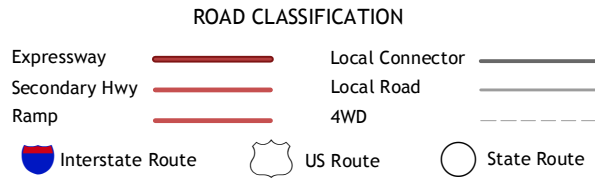
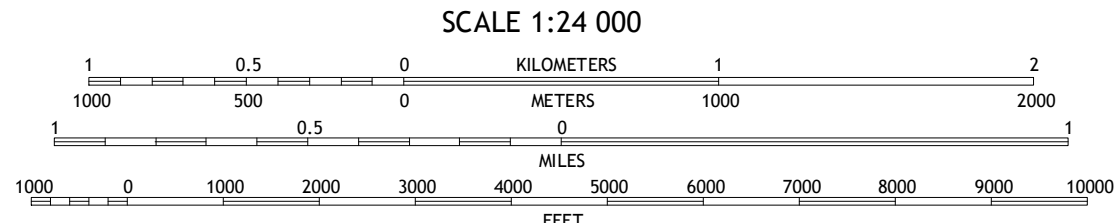
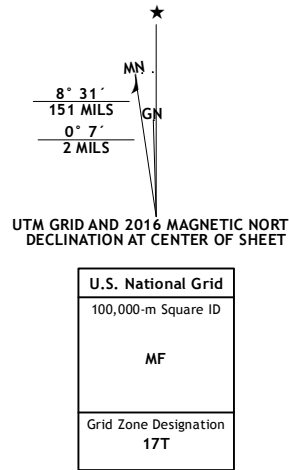
ROBERTSVILLE QUADRANGLE
OHIO-STARK CO.
7.5-MINUTE SERIES



Produced by the United States Geological Survey
North American Datum of 1983 (NAD83)
World Geodetic System of 1984 (WGS84)
1 000-meter grid: Universal Transverse Mercator, Zone 17T
10 000-foot ticks: Ohio Coordinate System of 1983 (north zone)

This map is not a legal document. Boundaries may be generalized for this map scale. Private lands within government reservations may not be shown. Obtain permission before entering private lands.

Imagery.....NAIP, October 2015
Roads.....U.S. Census Bureau, 2015
Names.....GNIS, 2016
Hydrography.....National Hydrography Dataset, 2015
Contours.....National Elevation Dataset, 2010
Boundaries.....Multiple sources; see metadata file 1972-2016
Public Land Survey System.....BLM, 2013
Wetlands.....FWS National Wetlands Inventory 1977-2014



1	2	3
4	5	6
7	8	9

1 Hartsville
2 Limaville
3 Alliance
4 Canton East
5 Homeworth
6 Waynesburg
7 Malvern
8 Minerva

ROBERTSVILLE, OH
2016

