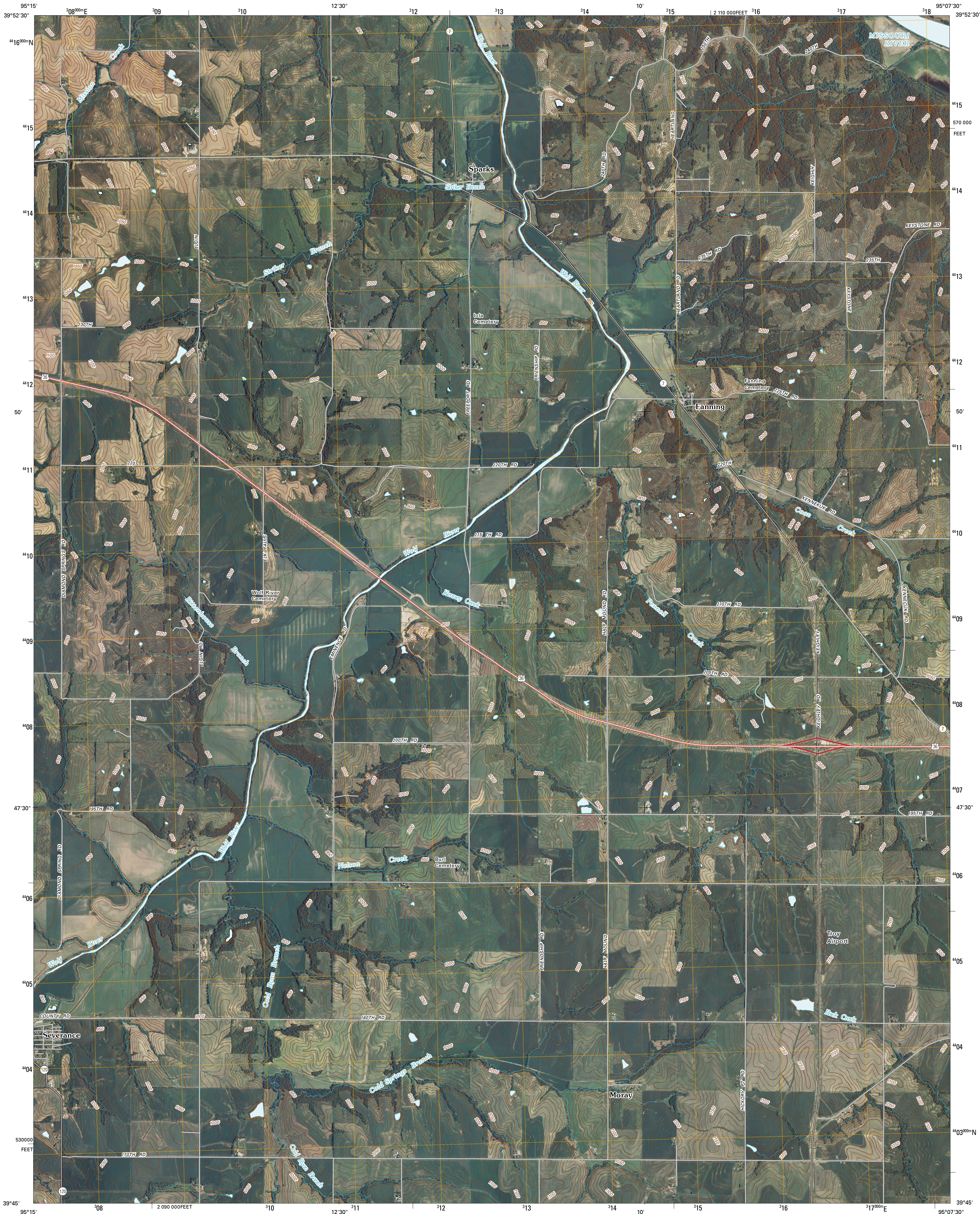




U.S. DEPARTMENT OF THE INTERIOR  
U. S. GEOLOGICAL SURVEY

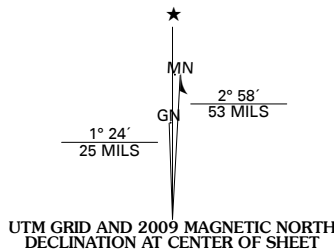


SPARKS QUADRANGLE  
KANSAS-MISSOURI  
7.5-MINUTE SERIES



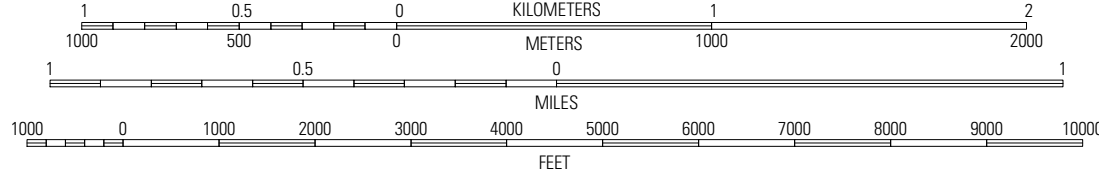
Produced by the United States Geological Survey  
North American Datum of 1983 (NAD83)  
World Geodetic System of 1984 (WGS84). Projection and  
1 000-meter grid: Universal Transverse Mercator, Zone 15S  
10 000-foot ticks: Kansas Coordinate System of 1983  
(north zone)

Imagery.....NAIP, June 2008  
Roads.....National Transportation Dataset, 2005 - 2008  
Names.....GNIS, 2008  
Hydrography.....National Hydrography Dataset, 2008  
Contours.....National Elevation Dataset, 2008



U.S. National Grid
100,000-m Square ID
UE
Grid Zone Designation
15S

SCALE 1:24 000



CONTOUR INTERVAL 10 FEET

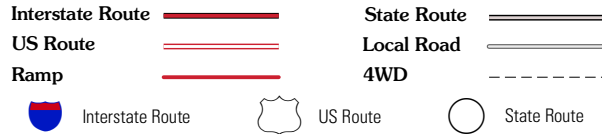
This map was produced to conform with version 0.5.10 of the  
draft USGS Standards for 7.5-Minute Quadrangle Maps.  
A metadata file associated with this product is also draft version 0.5.10



QUADRANGLE LOCATION		
White Cloud	Oregon	Forbes
Highland	Sparks	Troy
Denton	Bendena	Archison NE

ADJOINING 7.5' QUADRANGLES

ROAD CLASSIFICATION



SPARKS, KS-MO  
2009