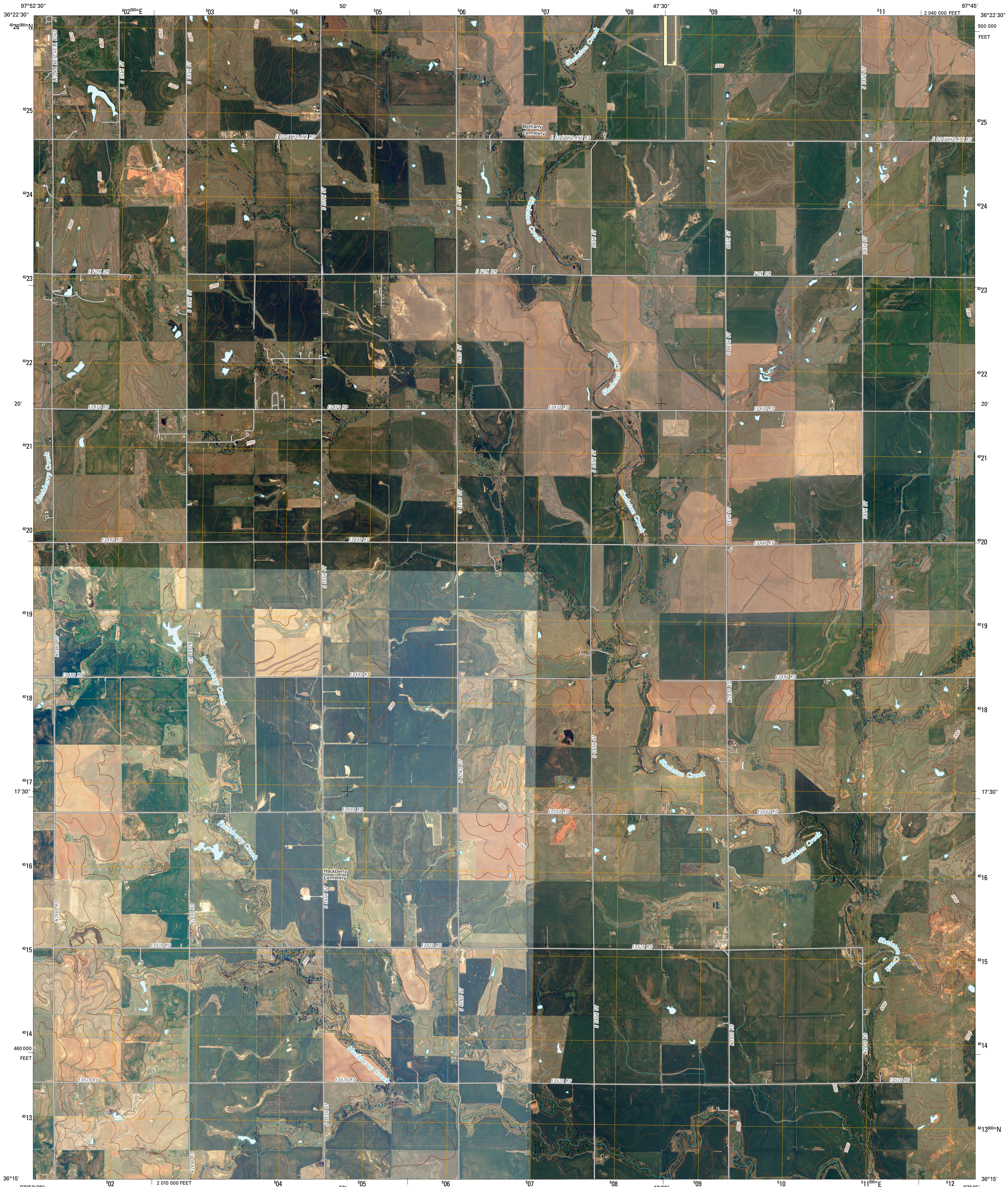




U.S. DEPARTMENT OF THE INTERIOR
U. S. GEOLOGICAL SURVEY

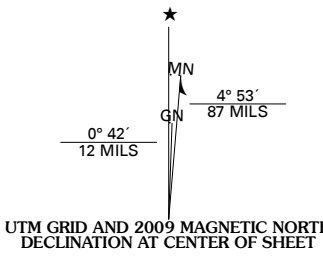


ENID SE QUADRANGLE
OKLAHOMA
7.5-MINUTE SERIES



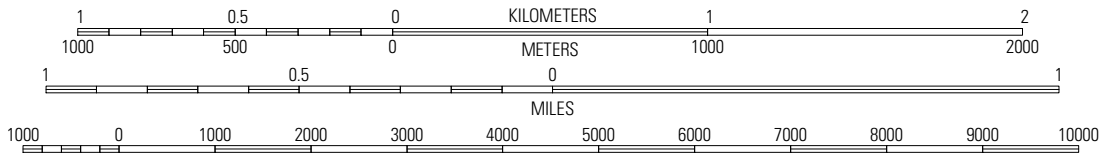
Produced by the United States Geological Survey
North American Datum of 1983 (NAD83)
World Geodetic System of 1984 (WGS84). Projection and
1 000-meter grid: Universal Transverse Mercator, Zone 14S
10 000-foot ticks: Oklahoma Coordinate System of 1983
(north zone)

Imagery.....NAIP, May 2008
Roads.....National Transportation Dataset, 2008
Names.....CNIS, 2008
Hydrography.....National Hydrography Dataset, 2008
Contours.....National Elevation Dataset, 2008



U.S. National Grid
100,000-m Square ID
PF
Grid Zone Designation
14S

SCALE 1:24 000



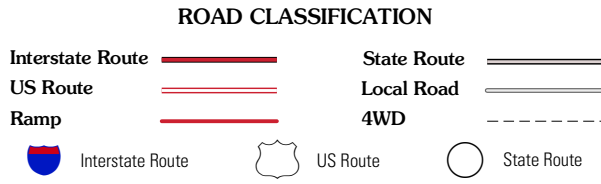
CONTOUR INTERVAL 10 FEET

This map was produced to conform with version 0.5.10 of the
draft USGS Standards for 7.5-Minute Quadrangle Maps.
A metadata file associated with this product is also draft version 0.5.10



QUADRANGLE LOCATION		
Enid West	Enid East	Breckinridge
Waukomis	Enid SE	Fairmont
Bloom	Steinerts Lake	Marshall West

ADJOINING 7.5' QUADRANGLES



ENID SE, OK
2009