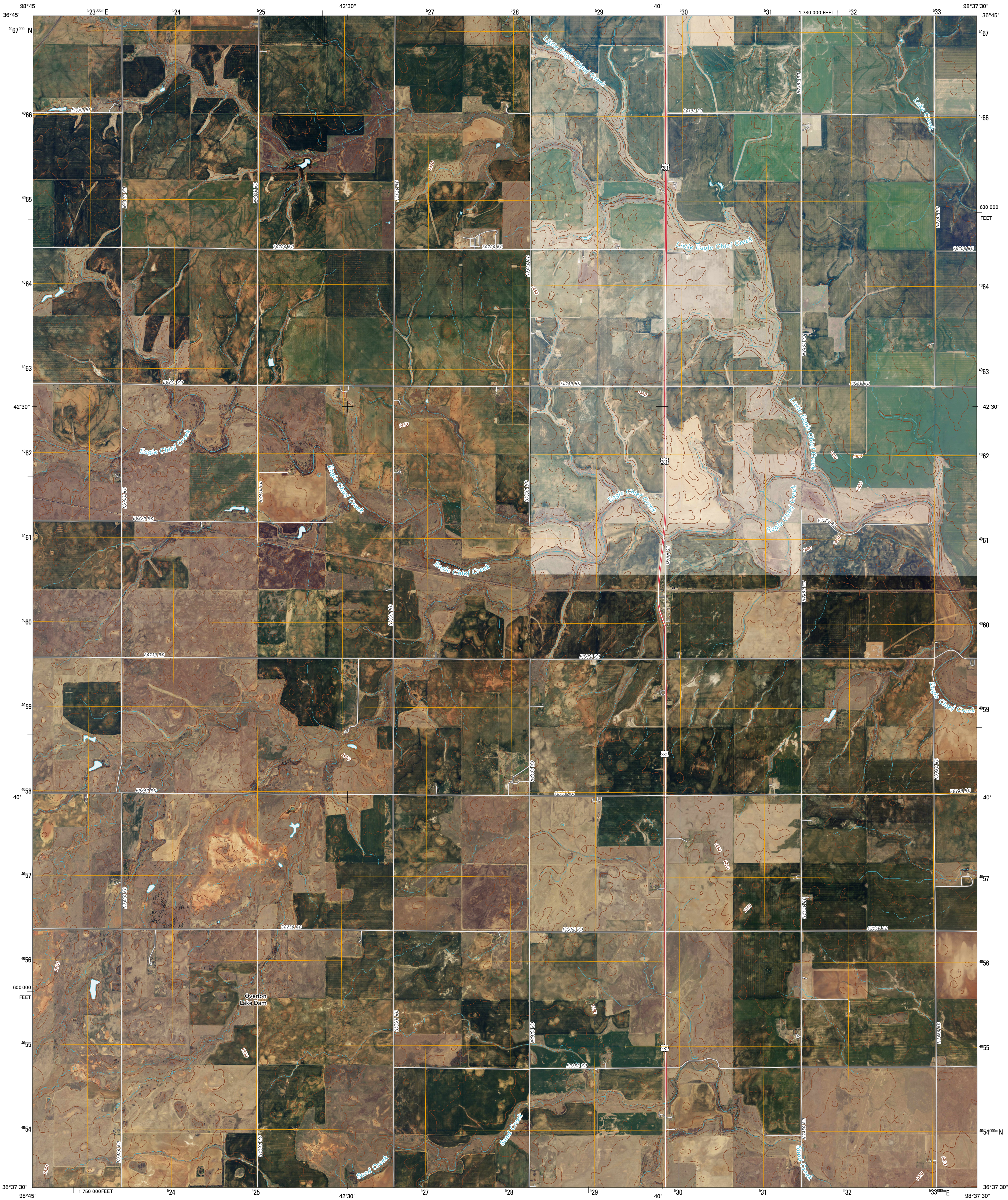




U.S. DEPARTMENT OF THE INTERIOR
U. S. GEOLOGICAL SURVEY

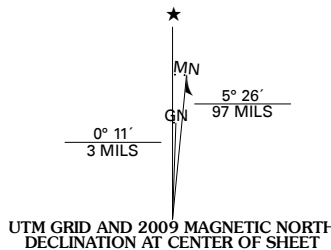


HOPETON QUADRANGLE
OKLAHOMA
7.5-MINUTE SERIES

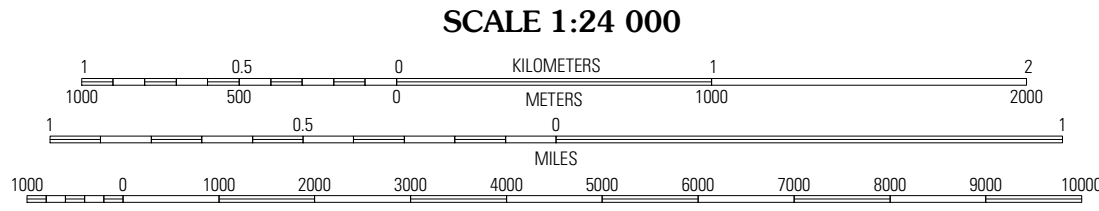


Produced by the United States Geological Survey
North American Datum of 1983 (NAD83)
World Geodetic System of 1984 (WGS84). Projection and
1 000-meter grid: Universal Transverse Mercator, Zone 14S
10 000-foot ticks: Oklahoma Coordinate System of 1983
(north zone)

Imagery.....NAIP, April 2008
Roads.....National Transportation Dataset, 2006
Names.....GNIS, 2008
Hydrography.....National Hydrography Dataset, 2008
Contours.....National Elevation Dataset, 2007



U.S. National Grid
100,000-m Square ID
NF
Grid Zone Designation
14S

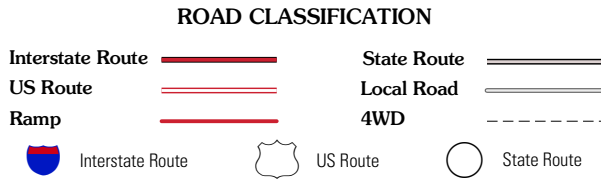


CONTOUR INTERVAL 10 FEET
This map was produced to conform with version 0.5.10 of the
draft USGS Standards for 7.5-Minute Quadrangle Maps.
A metadata file associated with this product is also draft version 0.5.10



QUADRANGLE LOCATION		
Tegarden SE	Aha	Aha SE
Awad	Hopeton	Dacoma
Waynoka East	Dacoma SW	Dacoma SE

ADJOINING 7.5' QUADRANGLES



HOPETON, OK
2009