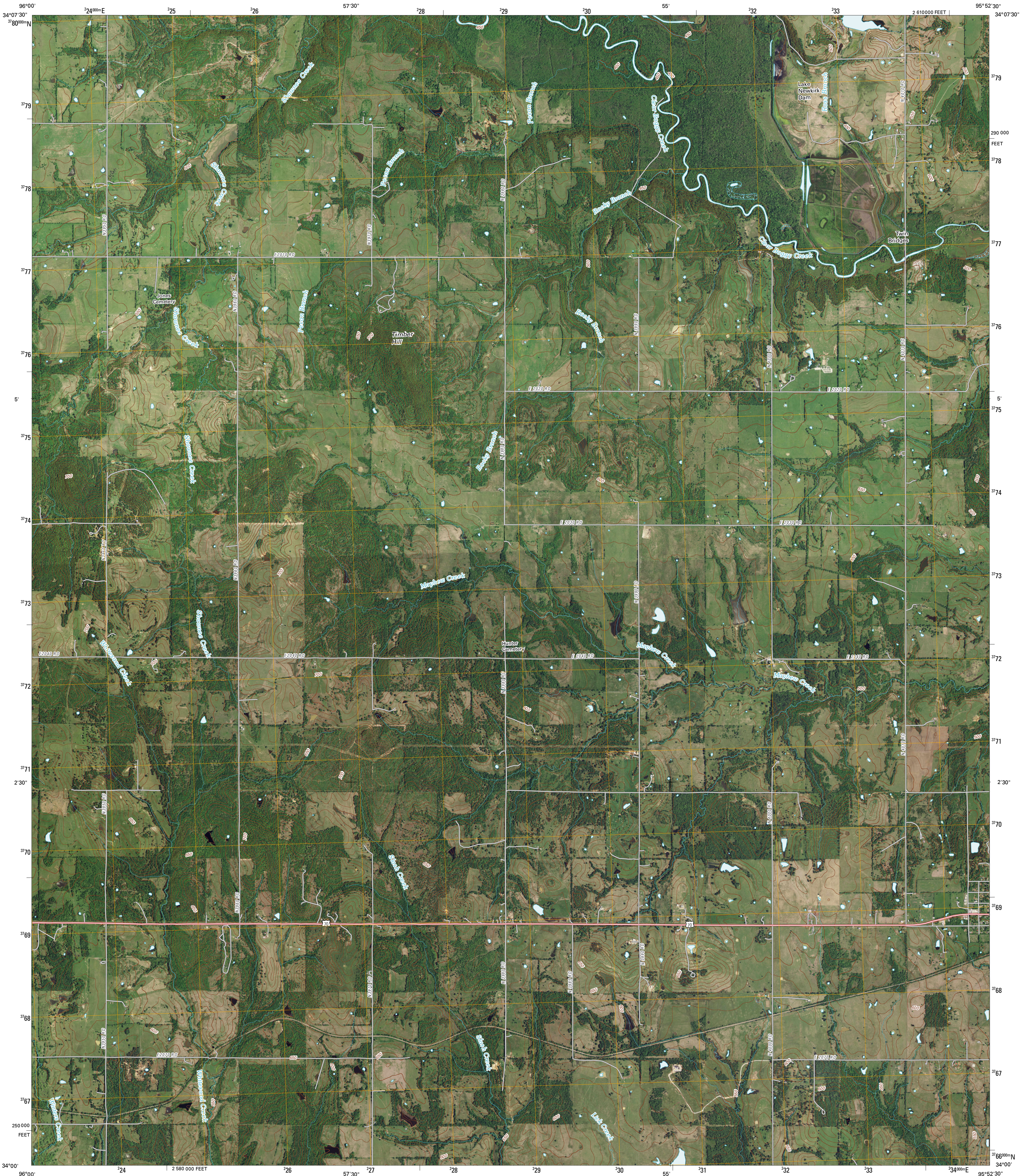




U.S. DEPARTMENT OF THE INTERIOR  
U. S. GEOLOGICAL SURVEY

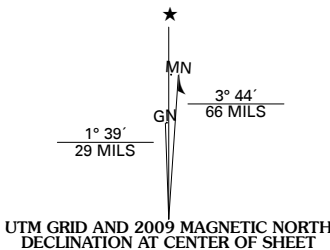


BOSWELL SW QUADRANGLE  
OKLAHOMA  
7.5-MINUTE SERIES

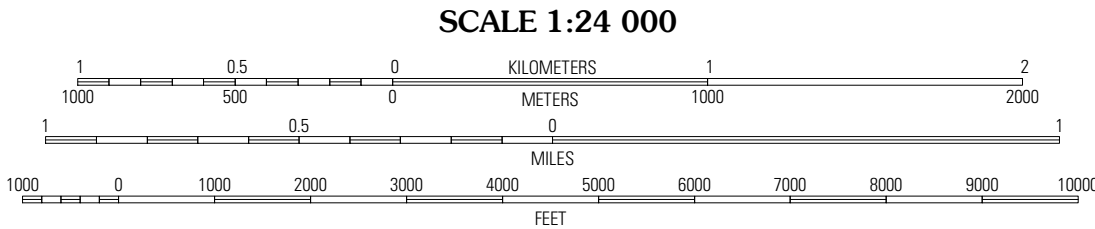


Produced by the United States Geological Survey  
North American Datum of 1983 (NAD83)  
World Geodetic System of 1984 (WGS84). Projection and  
1 000-meter grid: Universal Transverse Mercator, Zone 15S  
10 000-foot ticks: Oklahoma Coordinate System of 1983  
(south zone)

Imagery.....NAIP, April 2008  
Roads.....National Transportation Dataset, 2006  
Names.....CNIS, 2008  
Hydrography.....National Hydrography Dataset, 2008  
Contours.....National Elevation Dataset, 2007



U.S. National Grid
100,000-m Square ID
TT
Grid Zone Designation
15S



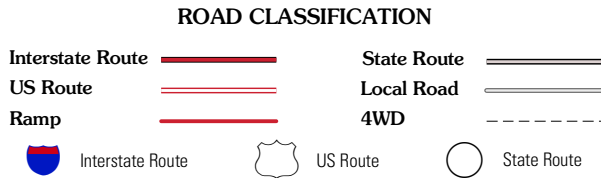
CONTOUR INTERVAL 10 FEET

This map was produced to conform with version 0.5.10 of the  
draft USGS Standards for 7.5-Minute Quadrangle Maps.  
A metadata file associated with this product is also draft version 0.5.10



Bentley	Boswell NW	Darwin
Bennington North	Boswell SW	Boswell
Bennington South	Lake West	New Oberlin

ADJOINING 7.5' QUADRANGLES



BOSWELL SW, OK  
2009