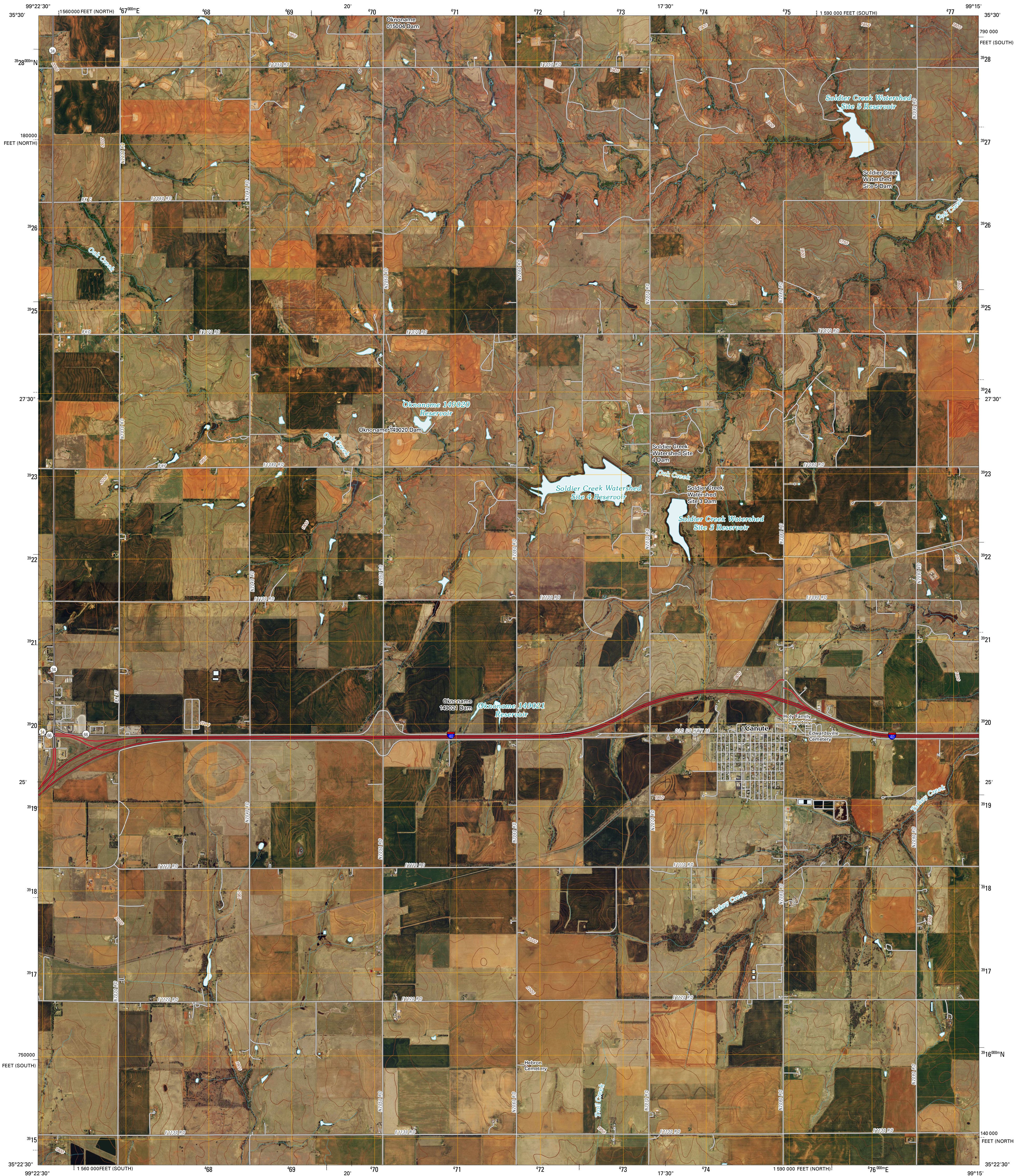




U.S. DEPARTMENT OF THE INTERIOR
U. S. GEOLOGICAL SURVEY

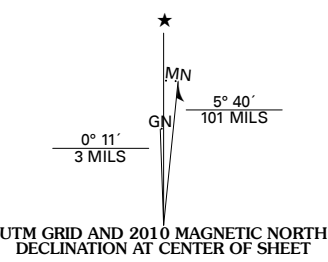


CANUTE QUADRANGLE
OKLAHOMA
7.5-MINUTE SERIES

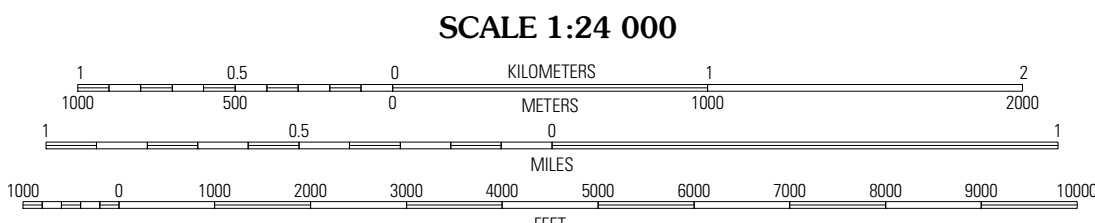


Produced by the United States Geological Survey
North American Datum of 1983 (NAD83)
World Geodetic System of 1984 (WGS84). Projection and
1 000-meter grid: Universal Transverse Mercator, Zone 14S
10 000-foot ticks: Oklahoma Coordinate System of 1983
(south and north zones)

Imagery.....NAIP, April 2008
Roads.....National Transportation Dataset, 2005 - 2006
Names.....GNIS, 2008
Hydrography.....National Hydrography Dataset, 2008
Contours.....National Elevation Dataset, 2000



| |
|-----------------------|
| U.S. National Grid |
| 100,000-m Square ID |
| ME |
| Grid Zone Designation |
| 14S |



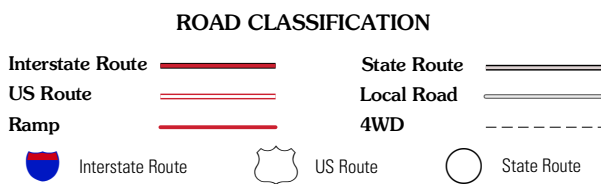
CONTOUR INTERVAL 10 FEET

This map was produced to conform with version 0.5.10 of the
draft USGS Standards for 7.5-Minute Quadrangle Maps.
A metadata file associated with this product is also draft version 0.5.10



| QUADRANGLE LOCATION | | |
|---------------------|----------------|--------------|
| Big Kaw Creek | Carpenter | Foss Dam |
| Elk City | Canute | Foss |
| Hocker | Elk City SE | Dill City |

ADJOINING 7.5' QUADRANGLES



CANUTE, OK
2010