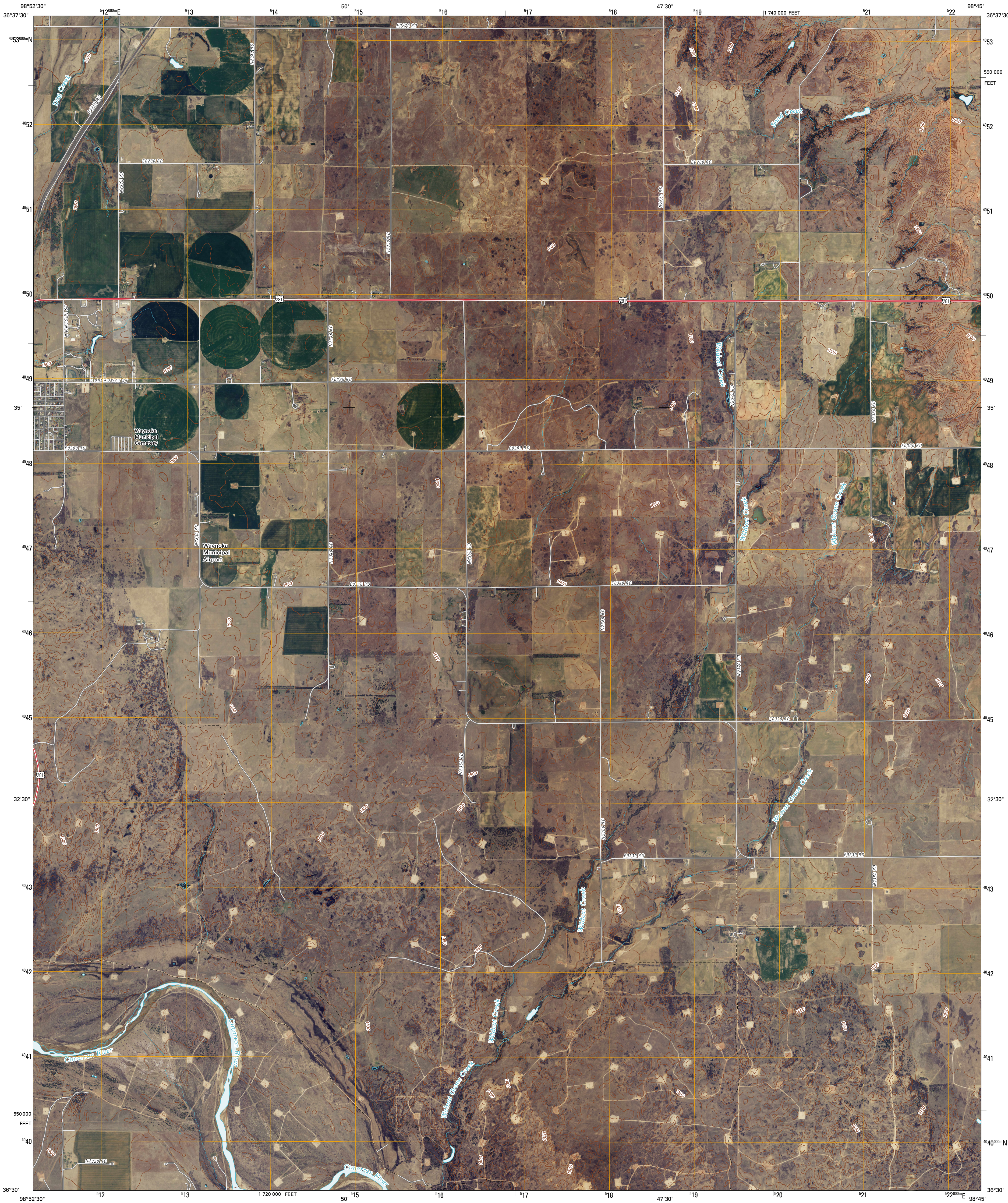




U.S. DEPARTMENT OF THE INTERIOR  
U. S. GEOLOGICAL SURVEY

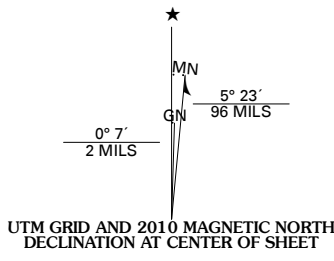


WAYNOKA EAST QUADRANGLE  
OKLAHOMA  
7.5-MINUTE SERIES

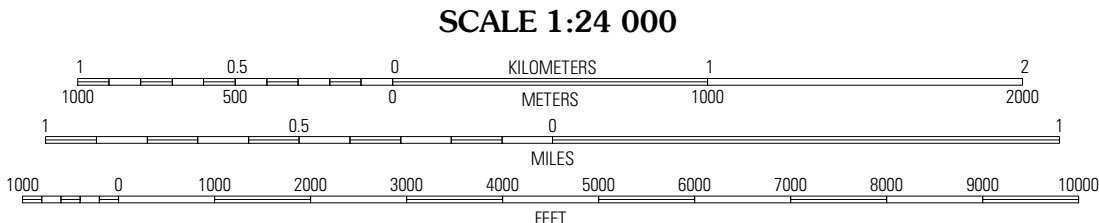


Produced by the United States Geological Survey  
North American Datum of 1983 (NAD83)  
World Geodetic System of 1984 (WGS84). Projection and  
1 000-meter grid: Universal Transverse Mercator, Zone 14S  
10 000-foot ticks: Oklahoma Coordinate System of 1983  
(north zone)

Imagery.....NAP, April 2008  
Roads.....National Transportation Dataset, 2006  
Names.....GNIS, 2006  
Hydrography.....National Hydrography Dataset, 2008  
Contours.....National Elevation Dataset, 2007



U.S. National Grid
100,000-m Square ID
NF
Grid Zone Designation
14S



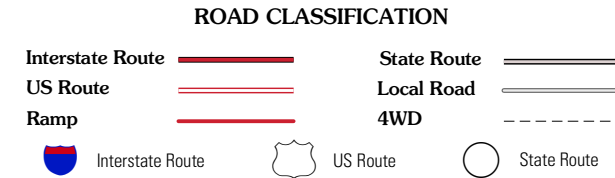
CONTOUR INTERVAL 10 FEET

This map was produced to conform with version 0.5.10 of the  
draft USGS Standards for 7.5-Minute Quadrangle Maps.  
A metadata file associated with this product is also draft version 0.5.10



QUADRANGLE LOCATION		
Waynoka NW	Award	Hopeton
Waynoka West	Waynoka East	Dacoma SW
Belva	Togo	Glass Mountains NW

ADJOINING 7.5' QUADRANGLES



WAYNOKA EAST, OK  
2010