

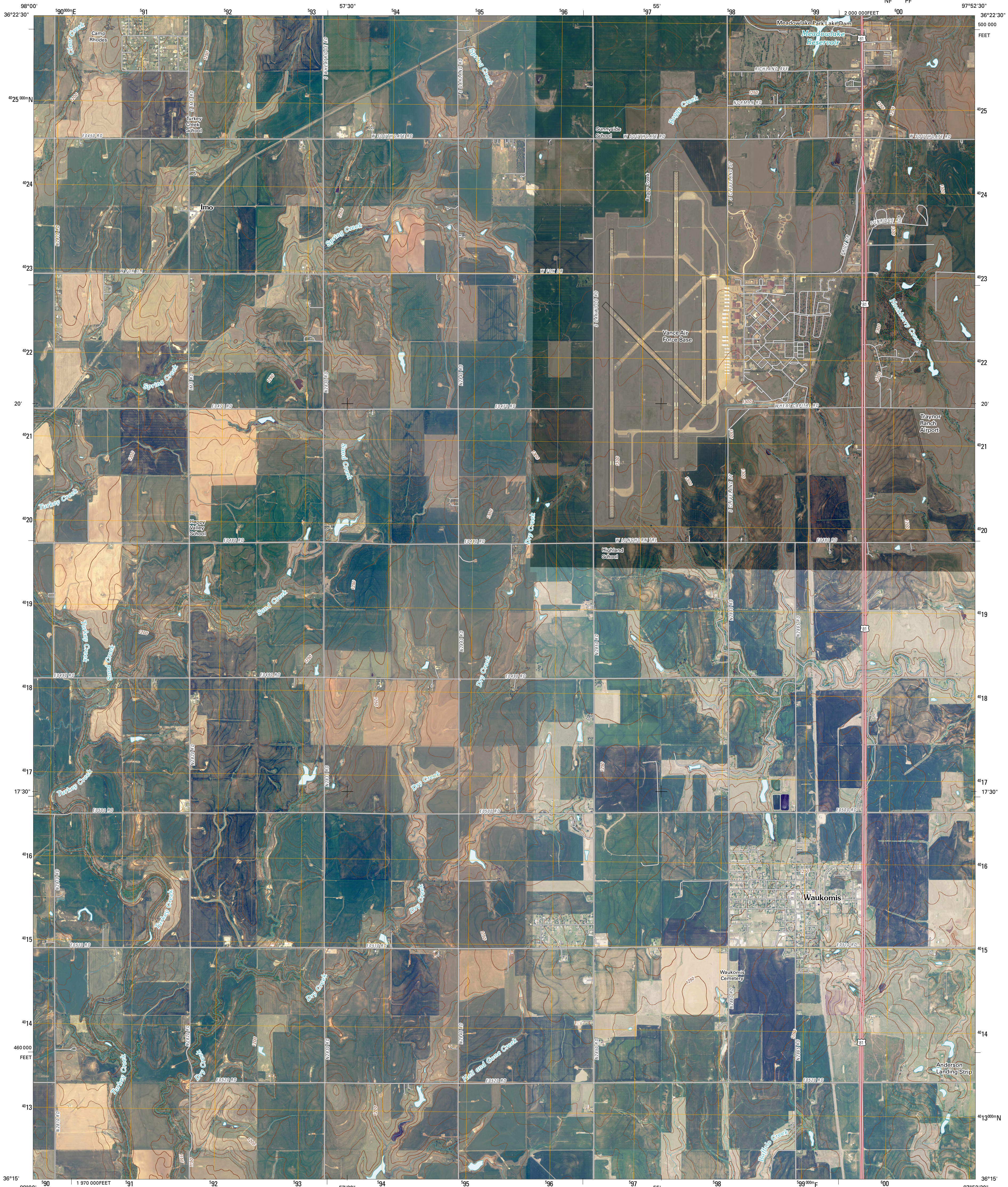


U.S. DEPARTMENT OF THE INTERIOR
U. S. GEOLOGICAL SURVEY



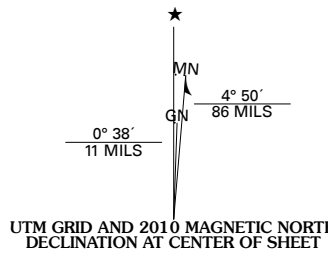
WAUKOMIS QUADRANGLE
OKLAHOMA

7.5-MINUTE SERIES
NF PF



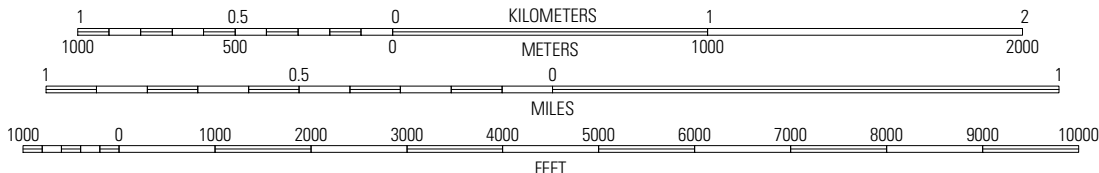
Produced by the United States Geological Survey
North American Datum of 1983 (NAD83)
World Geodetic System of 1984 (WGS84). Projection and
1 000-meter grid: Universal Transverse Mercator, Zone 14S
10 000-foot ticks: Oklahoma Coordinate System of 1983
(north zone)

Imagery.....NAIP, May 2008
Roads.....National Transportation Dataset, 2008
Names.....GNIS, 2008
Hydrography.....National Hydrography Dataset, 2008
Contours.....National Elevation Dataset, 2007



U.S. National Grid	
100,000-m Square ID	1 10
NF PF	
Grid Zone Designation	
14S	

SCALE 1:24 000



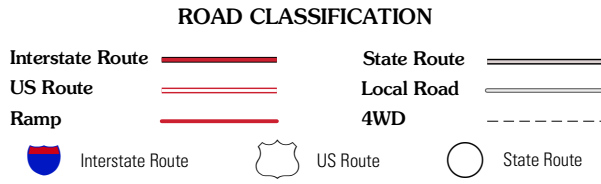
CONTOUR INTERVAL 10 FEET

This map was produced to conform with version 0.5.10 of the
draft USGS Standards for 7.5-Minute Quadrangle Maps.
A metadata file associated with this product is also draft version 0.5.10



QUADRANGLE LOCATION		
Lahoma	End West	End East
Drummond	Waukomis	End SE
Barr	Bison	Steinerts Lake

ADJOINING 7.5' QUADRANGLES



WAUKOMIS, OK
2010