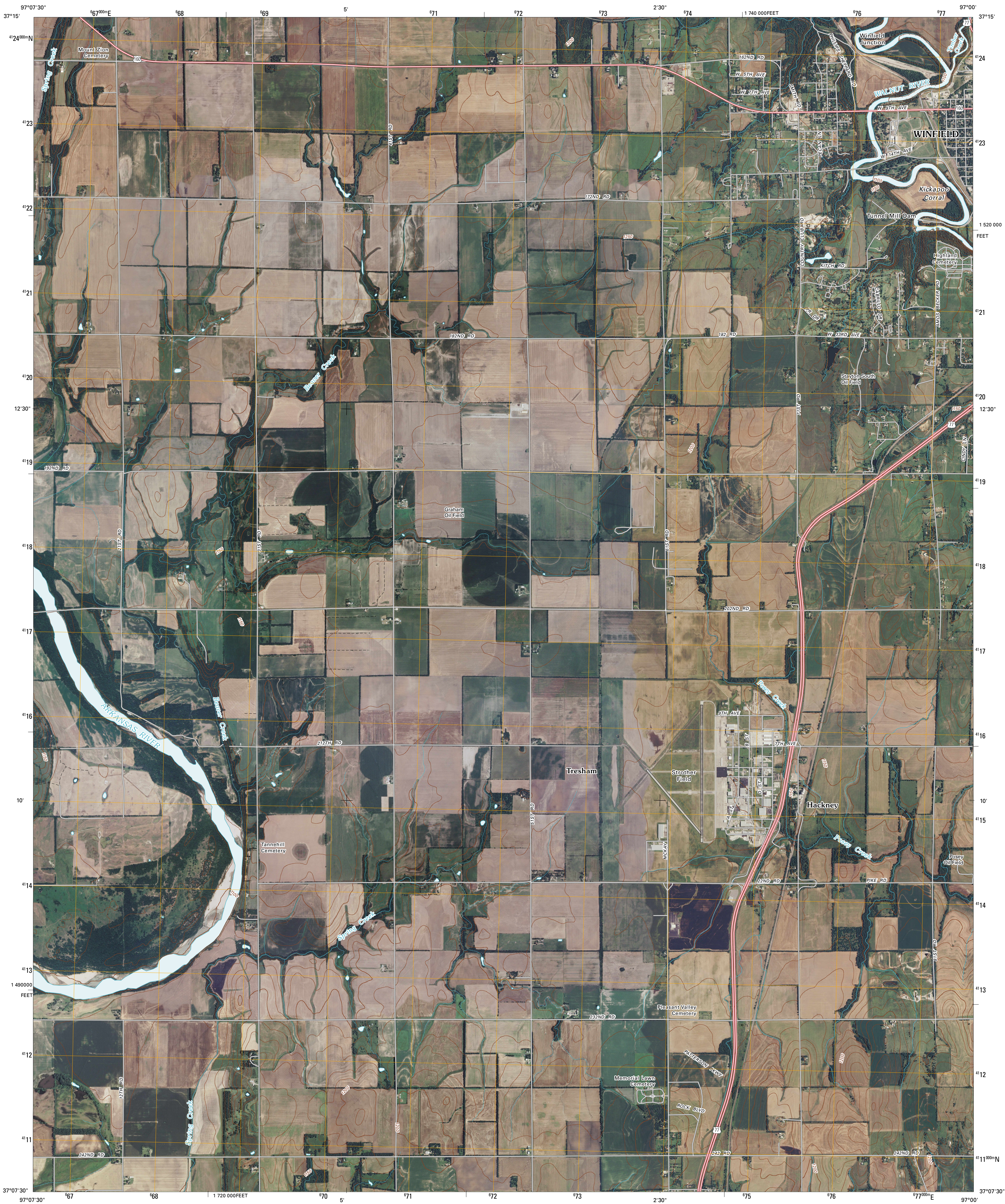




U.S. DEPARTMENT OF THE INTERIOR
U. S. GEOLOGICAL SURVEY



HACKNEY QUADRANGLE
KANSAS
7.5-MINUTE SERIES

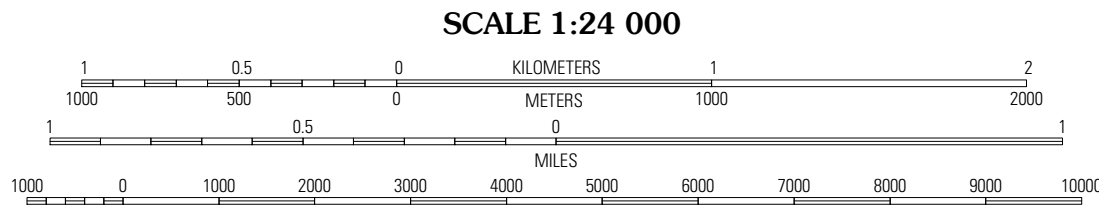


Produced by the United States Geological Survey
North American Datum of 1983 (NAD83)
World Geodetic System of 1984 (WGS84). Projection and
1 000-meter grid: Universal Transverse Mercator, Zone 14S
10 000-foot ticks: Kansas Coordinate System of 1983
(south zone)

Imagery.....NAIP, July 2008
Roads.....National Transportation Dataset, 2008
Names.....GNIS, 2008
Hydrography.....National Hydrography Dataset, 2008
Contours.....National Elevation Dataset, 2005

UTM GRID AND 2010 MAGNETIC NORTH
DECLINATION AT CENTER OF SHEET

| |
|-----------------------|
| U.S. National Grid |
| 100,000-m Square ID |
| PG |
| Grid Zone Designation |
| 14S |



CONTOUR INTERVAL 10 FEET

This map was produced to conform with version 0.5.10 of the
draft USGS Standards for 7.5-Minute Quadrangle Maps.
A metadata file associated with this product is also draft version 0.5.10



| | | |
|---------------|---------------|------------|
| Oxford | Alton | New Salem |
| Adamsville | Hackney | Winfield |
| Geuda Springs | Arkansas City | Silverdale |

ADJOINING 7.5' QUADRANGLES

ROAD CLASSIFICATION

| | |
|------------------|-------------|
| Interstate Route | State Route |
| US Route | Local Road |
| Ramp | 4WD |

Interstate Route US Route State Route

HACKNEY, KS
2010