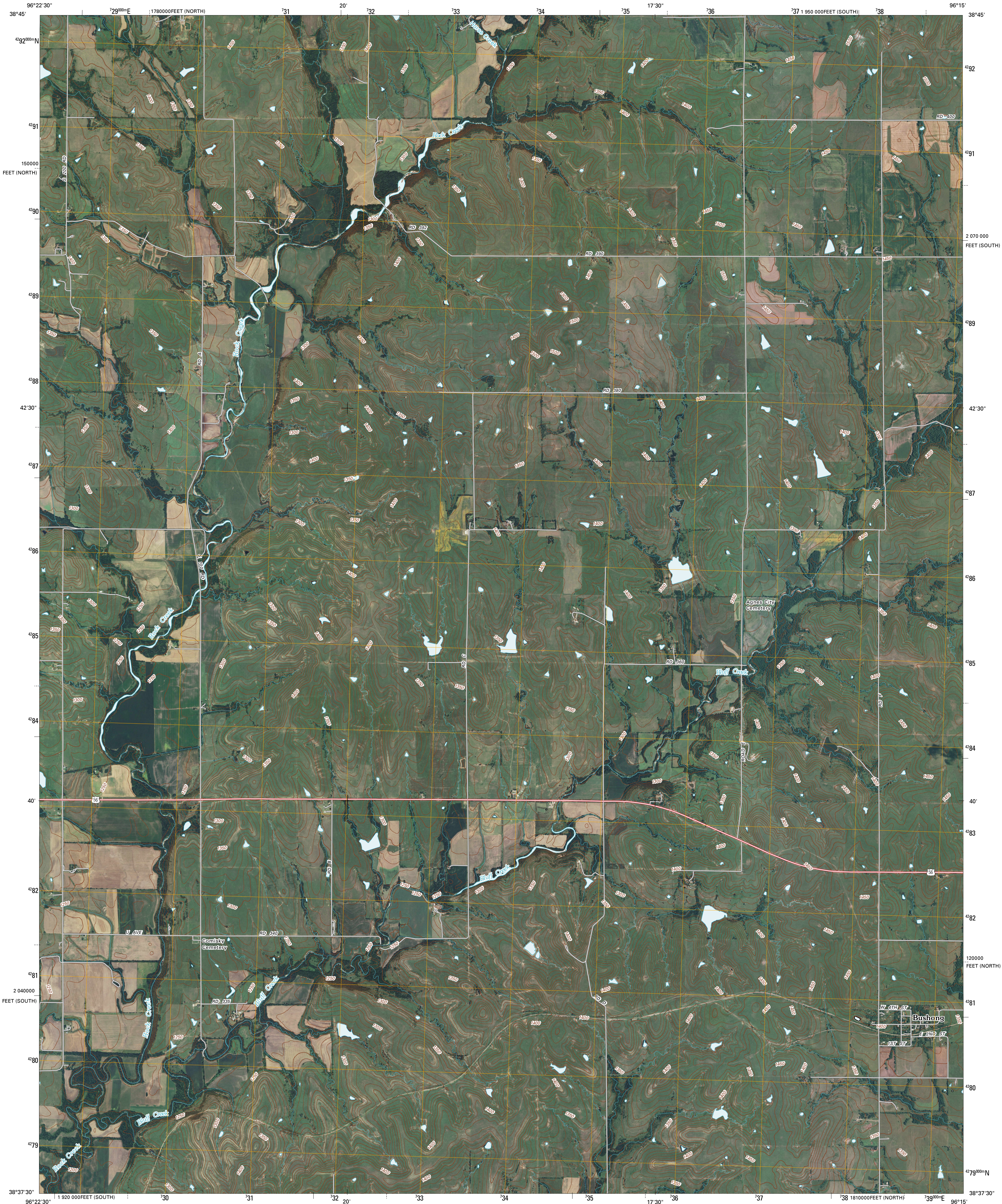




U.S. DEPARTMENT OF THE INTERIOR  
U. S. GEOLOGICAL SURVEY



BUSHONG QUADRANGLE  
KANSAS  
7.5-MINUTE SERIES



Produced by the United States Geological Survey  
North American Datum of 1983 (NAD83)  
World Geodetic System of 1984 (WGS84). Projection and  
1 000-meter grid: Universal Transverse Mercator, Zone 14S  
10 000-foot ticks: Kansas Coordinate System of 1983  
(south and north zones)

Imagery.....NAIP, July 2008  
Roads.....National Transportation Dataset, 2006  
Names.....National Hydrography Dataset, 2008  
Hydrography.....National Hydrography Dataset, 2008  
Contours.....National Elevation Dataset, 2006

UTM GRID AND 2010 MAGNETIC NORTH  
DECLINATION AT CENTER OF SHEET

U.S. National Grid
100,000m Square ID
QH
Grid Zone Designation
14S

SCALE 1:24 000

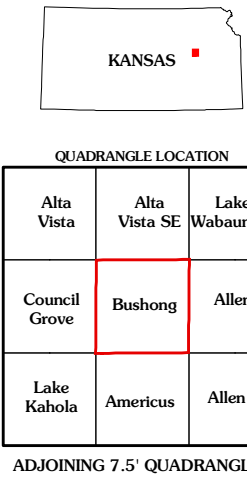
1 000 0 1000 2000 3000 4000 5000 6000 7000 8000 9000 10000

1 000 0 1000 2000 3000 4000 5000 6000 7000 8000 9000 10000

1 000 0 1000 2000 3000 4000 5000 6000 7000 8000 9000 10000

CONTOUR INTERVAL 10 FEET

This map was produced to conform with version 0.5.10 of the  
draft USGS Standards for 7.5-Minute Quadrangle Maps.  
A metadata file associated with this product is also draft version 0.5.10



ROAD CLASSIFICATION

Interstate Route  
US Route  
Ramp

State Route  
Local Road  
4WD

QUADRANGLE LOCATION		
Alta Vista	Alta Vista SE	Lake Wabaunsee
Council Grove	Bushong	Allen
Lake Kahola	Americus	Allen SW

ADJOINING 7.5 QUADRANGLES

BUSHONG, KS  
2010