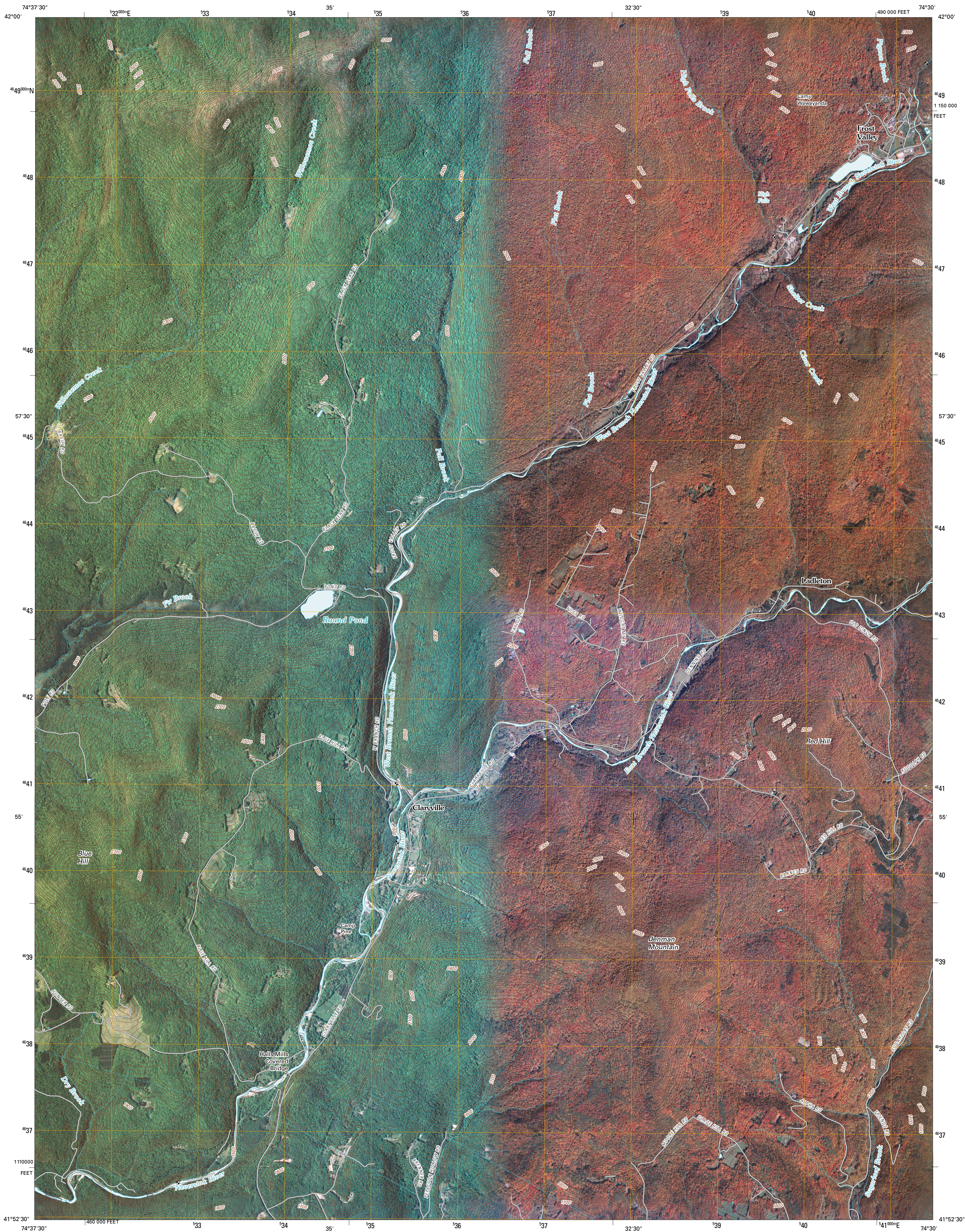




U.S. DEPARTMENT OF THE INTERIOR  
U. S. GEOLOGICAL SURVEY

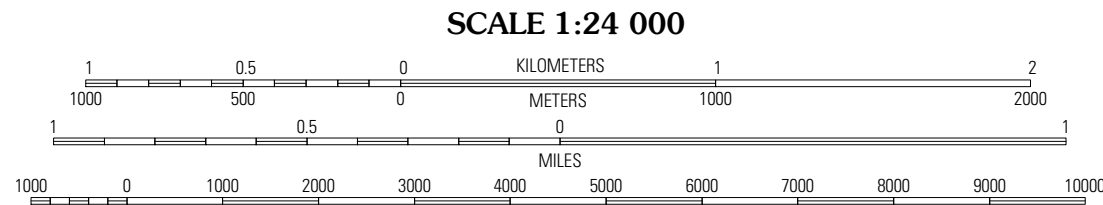
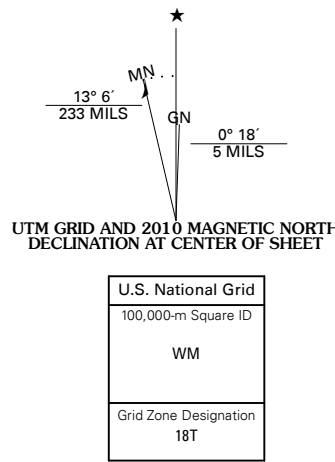


CLARYVILLE QUADRANGLE  
NEW YORK  
7.5-MINUTE SERIES



Produced by the United States Geological Survey  
North American Datum of 1983 (NAD83)  
World Geodetic System of 1984 (WGS84). Projection and  
1 000-meter grid: Universal Transverse Mercator, Zone 18T  
10 000-foot ticks: New York Coordinate System of 1983  
(east zone)

Imagery:.....NAIP, May 2008 - October 2008  
Roads:.....US Census Bureau TIGER data  
with limited USGS updates, 2006  
Names:.....GNIS, 2008  
Hydrography:.....National Hydrography Dataset, 2008  
Contours:.....National Elevation Dataset, 1998

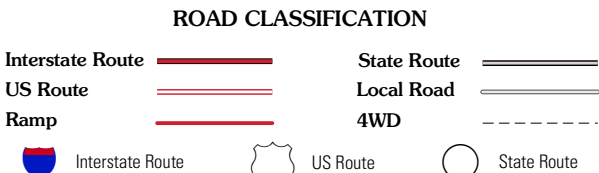


CONTOUR INTERVAL 20 FEET

This map was produced to conform with version 0.5.10 of the  
draft USGS Standards for 7.5-Minute Quadrangle Maps.  
A metadata file associated with this product is also draft version 0.5.10



| QUADRANGLE LOCATION |              |                    |  |
|---------------------|--------------|--------------------|--|
| Arena               | Seager       | Shandaken          |  |
| Willowemoc          | Claryville   | Pokamoose Mountain |  |
| Liberty East        | Grahamsville | Rondout Reservoir  |  |



CLARYVILLE, NY  
2010