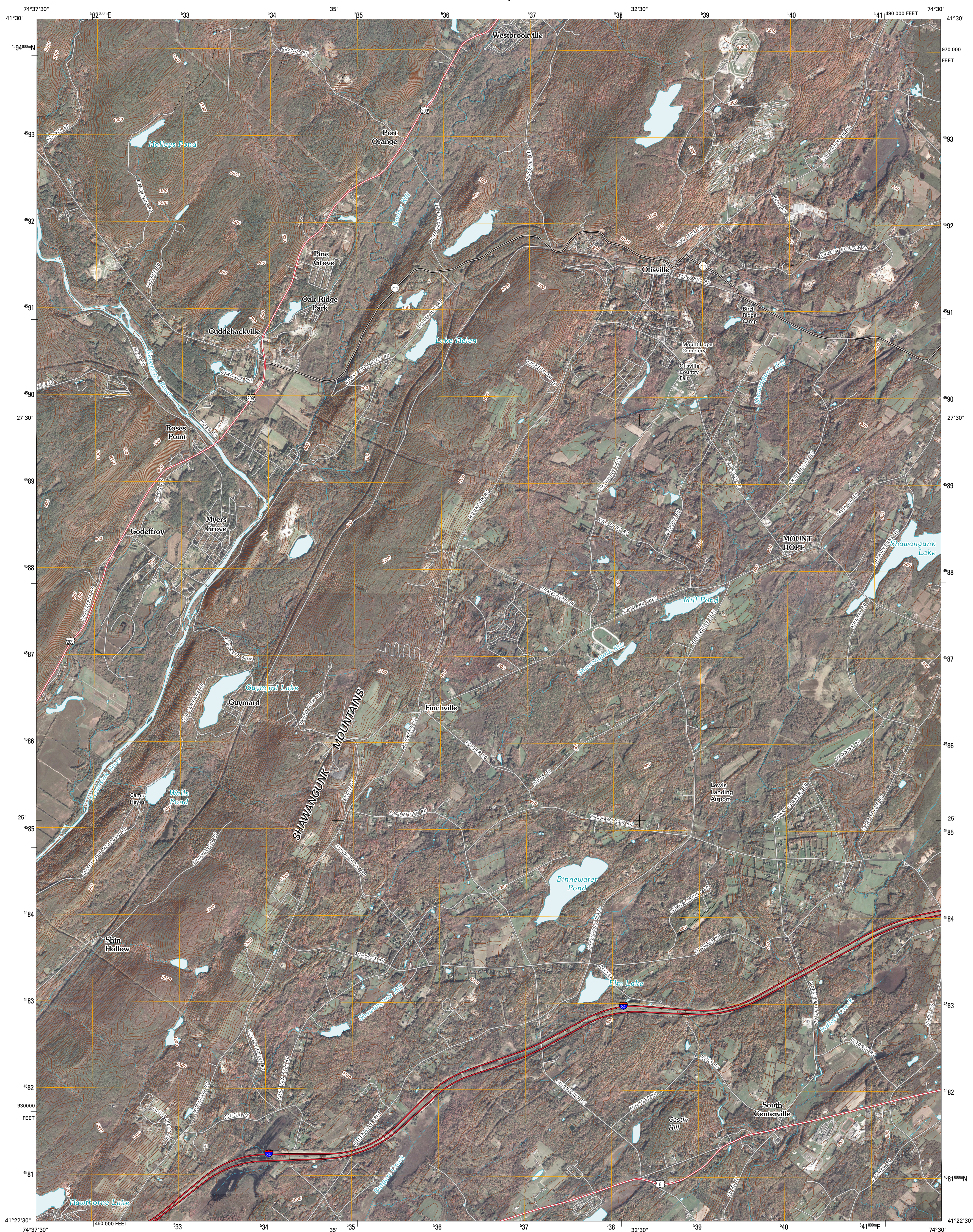




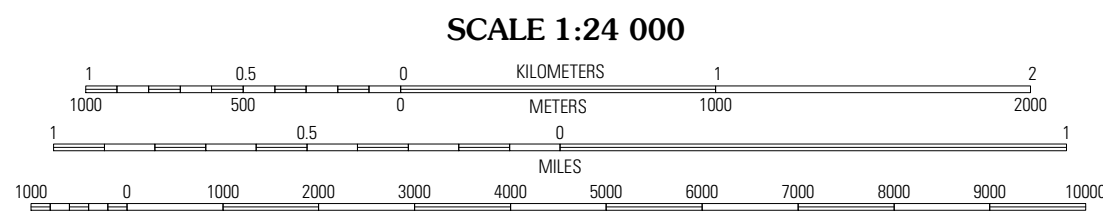
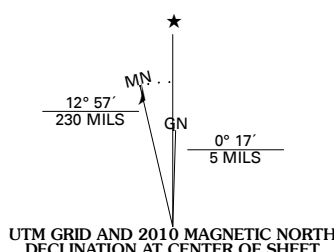
U.S. DEPARTMENT OF THE INTERIOR
U. S. GEOLOGICAL SURVEY



OTISVILLE QUADRANGLE
NEW YORK
7.5-MINUTE SERIES



Produced by the United States Geological Survey
North American Datum of 1983 (NAD83)
World Geodetic System of 1984 (WGS84). Projection and
1 000-meter grid: Universal Transverse Mercator, Zone 18T
10 000-foot ticks: New York Coordinate System of 1983
(east zone)





CONTOUR INTERVAL 20 FEET



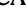
This map was produced to conform with version 0.5.10 of the draft USGS Standards for 7.5-Minute Quadrangle Maps. A metadata file associated with this product is also draft version 0.5.10



QUADRANGLE LOCATION		
Hartwood	Yankee Lake	Wurtsboro
Port Jervis North	Otisville	Middletown
Port Jervis South	Unionville	Pine Island

ROAD CLASSIFICATION

Interstate Route		State Route	
US Route		Local Road	
Ramp		4WD	

 Interstate Route  US Route  State Route

OTISVILLE, NY
2010