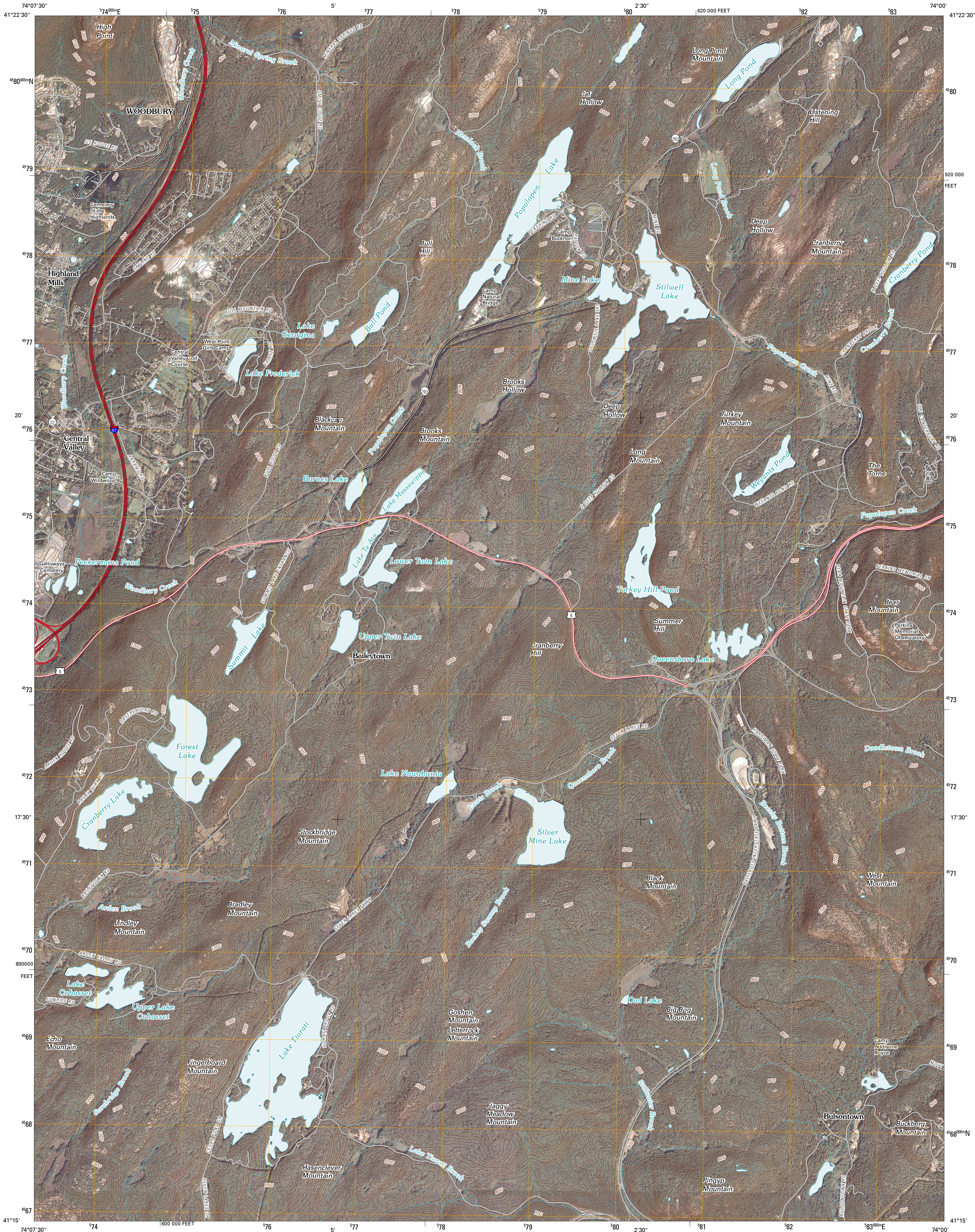




U.S. DEPARTMENT OF THE INTERIOR
U. S. GEOLOGICAL SURVEY

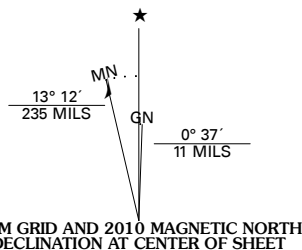


POPOLOPEN LAKE QUADRANGLE
NEW YORK
7.5-MINUTE SERIES



Produced by the United States Geological Survey
North American Datum of 1983 (NAD83)
World Geodetic System of 1984 (WGS84). Projection and
1 000-meter grid: Universal Transverse Mercator, Zone 18T
10 000-foot ticks: New York Coordinate System of 1983
(east zone)

Imagery.....NAIP, September 2006
Roads.....US Census Bureau TIGER data
with limited USGS updates, 2006 - 2007
Names.....National Hydrography Dataset, 2006
Hydrography.....National Hydrography Dataset, 2006
Contours.....National Elevation Dataset, 1999



U.S. National Grid
100,000-m Square ID
WL
Grid Zone Designation
18T

This map was produced to conform with version 0.5.10 of the
draft USGS Standards for 7.5-Minute Quadrangle Maps.
A metadata file associated with this product is also draft version 0.5.10



QUADRANGLE LOCATION		
Maybrook	Cornwall-on-Hudson	West Point
Monroe	Popolopen Lake	Peekskill
Sloatsburg	Thiells	Haverstraw

ROAD CLASSIFICATION		
Interstate Route	State Route	Local Road
US Route	4WD	
Ramp		
Interstate Route	US Route	State Route

POPOLOPEN LAKE, NY
2010