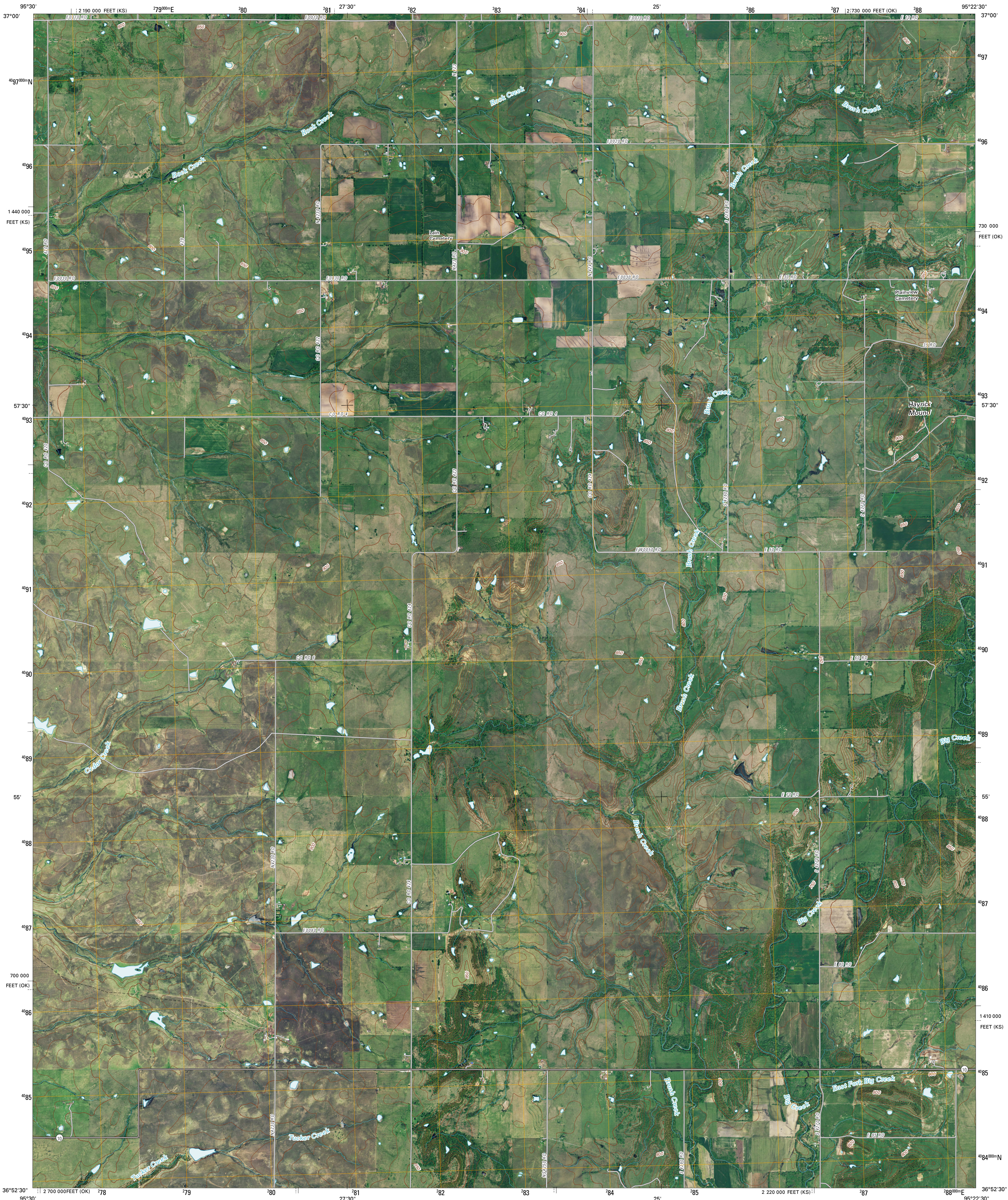




U.S. DEPARTMENT OF THE INTERIOR
U. S. GEOLOGICAL SURVEY



HAYRICK MOUND QUADRANGLE
OKLAHOMA-KANSAS
7.5-MINUTE SERIES

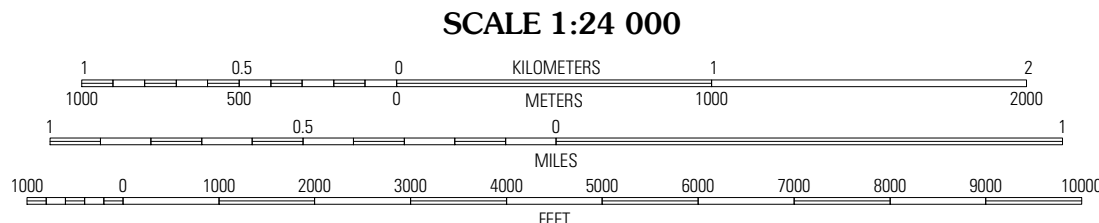


Produced by the United States Geological Survey
North American Datum of 1983 (NAD83)
World Geodetic System of 1984 (WGS84). Projection and
1 000-meter grid: Universal Transverse Mercator, Zone 15S
10 000-foot ticks: Oklahoma Coordinate System of 1983
(north zone) and Kansas Coordinate System of 1983
(south zone)

Imagery.....NAIP, May 2008 - June 2008
Roads.....National Transportation Dataset, 2006 - 2008
Names.....2008
Hydrography.....National Hydrography Dataset, 2008
Contours.....National Elevation Dataset, 2008

UTM GRID AND 2010 MAGNETIC NORTH
DECLINATION AT CENTER OF SHEET

U.S. National Grid
100,000-m Square ID
TA
Grid Zone Designation
15S



SCALE 1:24 000

CONTOUR INTERVAL 10 FEET

This map was produced to conform with version 0.5.10 of the
draft USGS Standards for 7.5-Minute Quadrangle Maps.
A metadata file associated with this product is also draft version 0.5.10



Colleyville East	Valeda	Edna
South Colleyville	Hayrick Mound	Hollow
Childers	Sanders	Centralia

ADJOINING 7.5' QUADRANGLES

ROAD CLASSIFICATION

Interstate Route
US Route
Ramp
State Route
Local Road
4WD

HAYRICK MOUND, OK-KS
2010