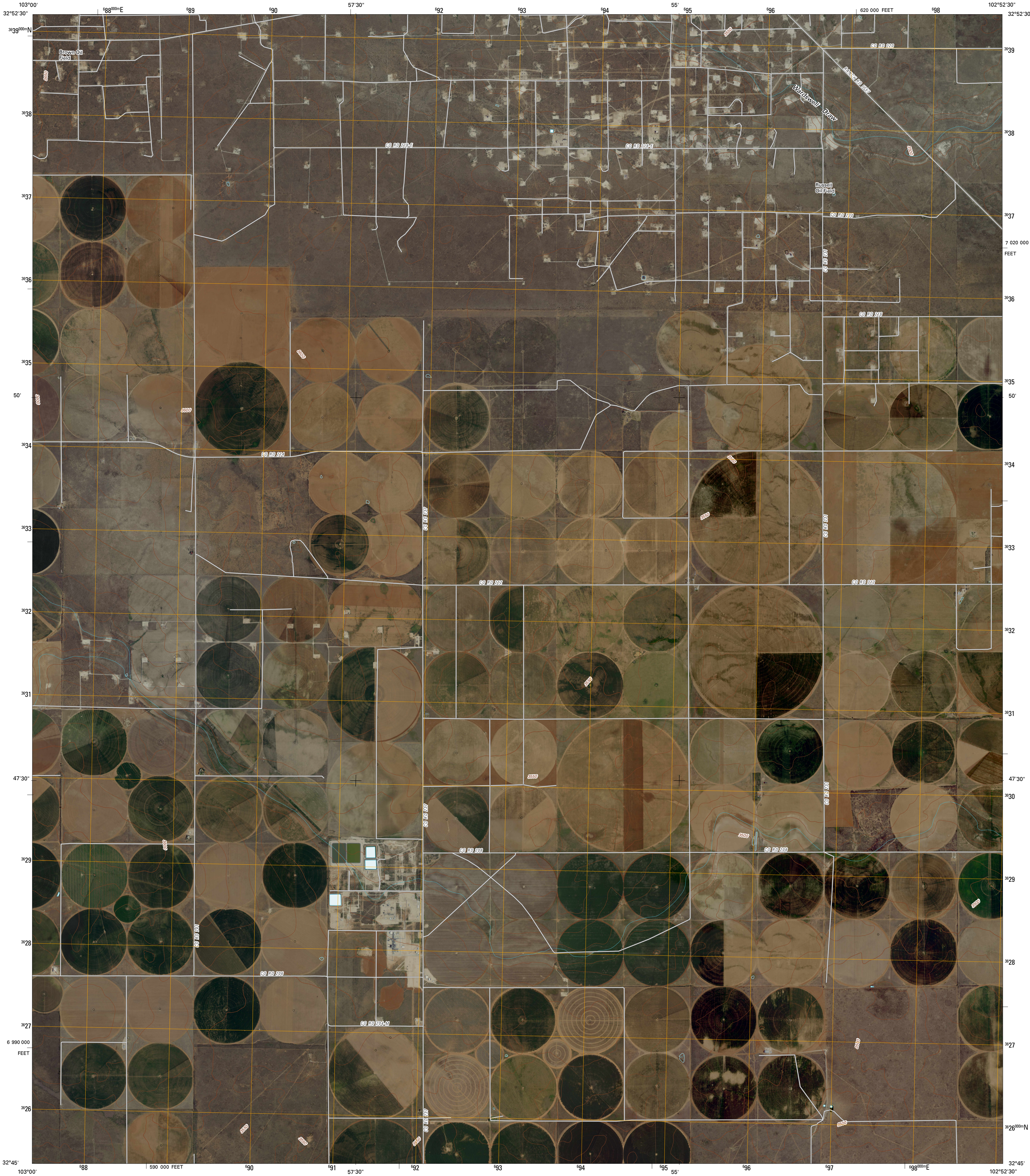




U.S. DEPARTMENT OF THE INTERIOR  
U. S. GEOLOGICAL SURVEY

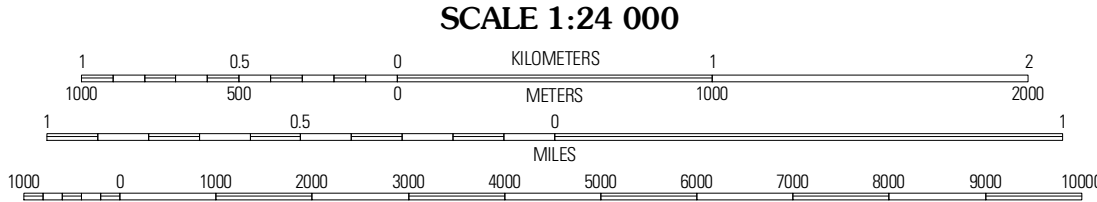
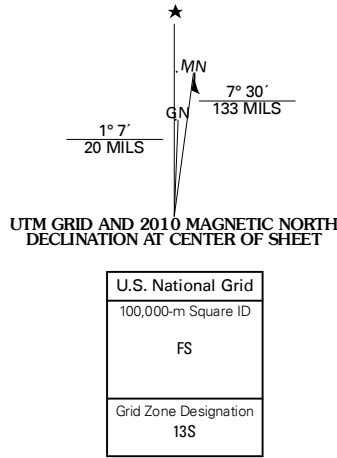


DENVER CITY SW QUADRANGLE  
TEXAS  
7.5-MINUTE SERIES



Produced by the United States Geological Survey  
North American Datum of 1983 (NAD83)  
World Geodetic System of 1984 (WGS84) Projection and  
1 000-meter grid: Universal Transverse Mercator, Zone 13S  
10 000-foot ticks: Texas Coordinate System of 1983  
(north central zone)

Imagery.....NAIP, September 2008  
Roads.....US Census Bureau TIGER data  
with limited USGS updates, 2008  
Names.....GNIS, 2008  
Hydrography.....National Hydrography Dataset, 1995  
Contours.....National Elevation Dataset, 2007



SCALE 1:24 000

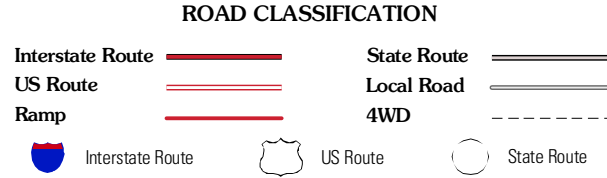
CONTOUR INTERVAL 10 FEET

This map was produced to conform with version 0.5.10 of the  
draft USGS Standards for 7.5-Minute Quadrangle Maps.  
A metadata file associated with this product is also draft version 0.5.10



QUADRANGLE LOCATION		
Humble City NE	Hughesboro	Denver City
Humble City SE	Denver City SW	Denver City SE
Hobbs East	Paynes Corner NW	Paynes Corner

ADJOINING 7.5' QUADRANGLES  
TX 321.02-332



DENVER CITY SW, TX  
2010