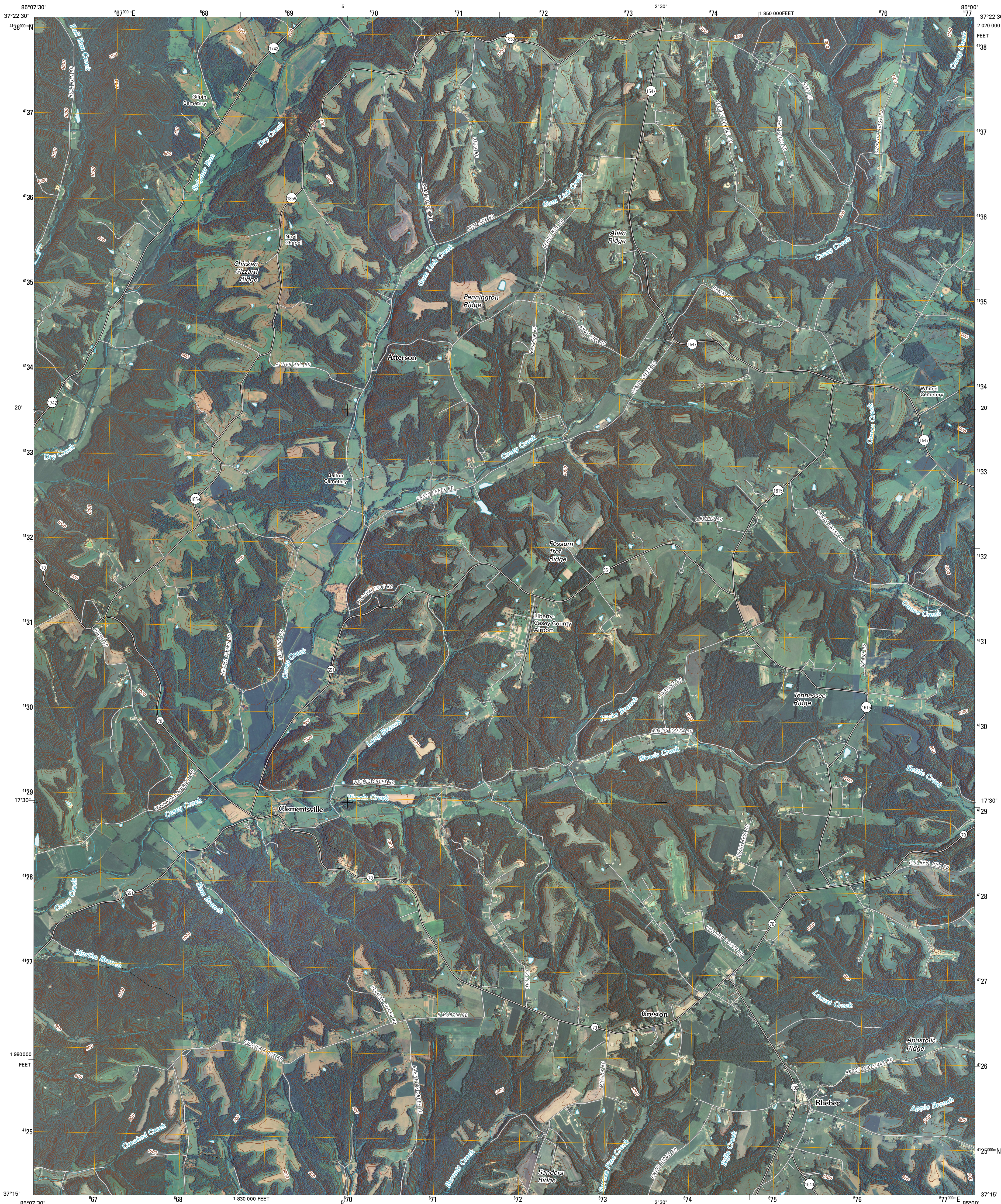




U.S. DEPARTMENT OF THE INTERIOR  
U. S. GEOLOGICAL SURVEY

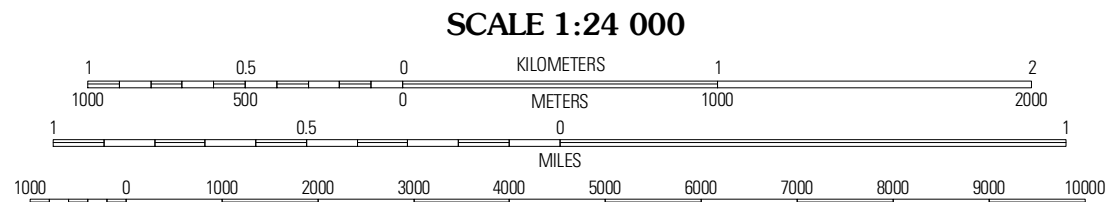
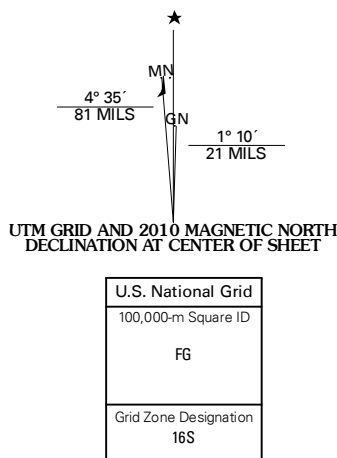


CLEMENTSVILLE QUADRANGLE  
KENTUCKY  
7.5-MINUTE SERIES



Produced by the United States Geological Survey  
North American Datum of 1983 (NAD83)  
World Geodetic System of 1984 (WGS84). Projection and  
1 000-meter grid: Universal Transverse Mercator, Zone 16S  
10 000-foot ticks: Kentucky Coordinate System of 1983  
(south zone)

Imagery.....NAIP, August 2008  
Roads.....US Census Bureau TIGER data  
with limited USGS updates, 2004 - 2005  
Names.....GNIS, 2008  
Hydrography.....National Hydrography Dataset, 2008  
Contours.....National Elevation Dataset, 2002



This map was produced to conform with version 0.5.10 of the  
draft USGS Standards for 7.5-Minute Quadrangle Maps.  
A metadata file associated with this product is also draft version 0.5.10



| QUADRANGLE LOCATION |               |             |  |
|---------------------|---------------|-------------|--|
| Bedford             | Bedford       | Ellettsburg |  |
|                     | NE            |             |  |
| Mansfield           | Clementsville | Liberty     |  |
| Kentley             | Dunville      | Phil        |  |

ADJOINING 7.5' QUADRANGLES

| ROAD CLASSIFICATION |             |            |     |
|---------------------|-------------|------------|-----|
| Interstate Route    | State Route | Local Road | 4WD |
| US Route            |             |            |     |
| Ramp                |             |            |     |
|                     |             |            |     |

CLEMENTSVILLE, KY  
2010