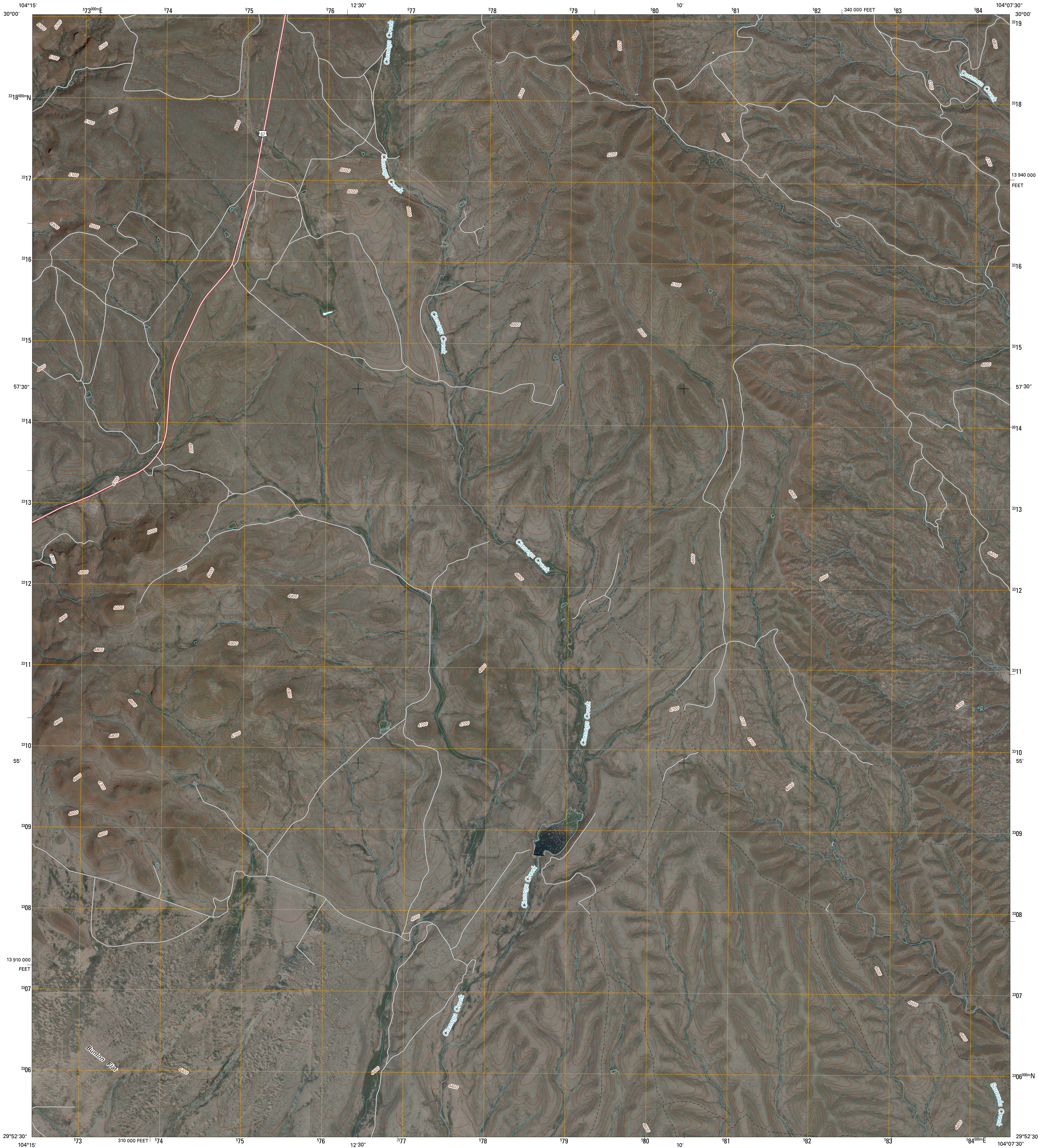




U.S. DEPARTMENT OF THE INTERIOR  
U. S. GEOLOGICAL SURVEY

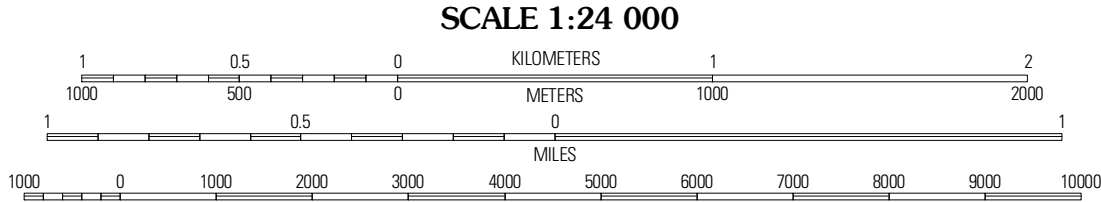
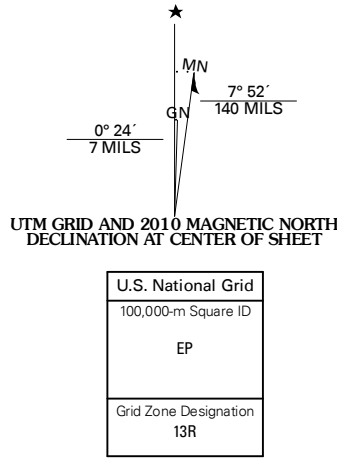


CERROS PRIETOS QUADRANGLE  
TEXAS  
7.5-MINUTE SERIES



Produced by the United States Geological Survey  
North American Datum of 1983 (NAD83)  
World Geodetic System of 1984 (WGS84). Projection and  
1 000-meter grid; Universal Transverse Mercator, Zone 13R  
10 000-foot ticks; Texas Coordinate System of 1983  
(south central zone)

Imagery.....NAP, September 2008  
Roads.....US Census Bureau TIGER data  
with limited USGS updates, 2008  
Names.....GNIS, 2008  
Hydrography.....National Hydrography Dataset, 1995  
Contours.....National Elevation Dataset, 2006



CONTOUR INTERVAL 20 FEET

This map was produced to conform with version 0.5.10 of the  
draft USGS Standards for 7.5-Minute Quadrangle Maps.  
A metadata file associated with this product is also draft version 0.5.10



| QUADRANGLE LOCATION   |                     |                 |
|-----------------------|---------------------|-----------------|
| Cuesta Del Barro East | San Esteban Lake SW | Frenchman Hills |
| Cieneguita            | Cerros Prietos      | Plata NE        |
| Shafter               | Cienega Mountains   | Plata           |

ADJOINING 7.5' QUADRANGLES  
TX 29104-443

| ROAD CLASSIFICATION |             |            |
|---------------------|-------------|------------|
| Interstate Route    | State Route | Local Road |
| US Route            | 4WD         |            |
|                     |             |            |

CERROS PRIETOS, TX  
2010